

BUNGALOW HAVEN 30

1 BEDROOM | 1.5 BATHS | 1,511 SQ. FT. | 30' POCKET

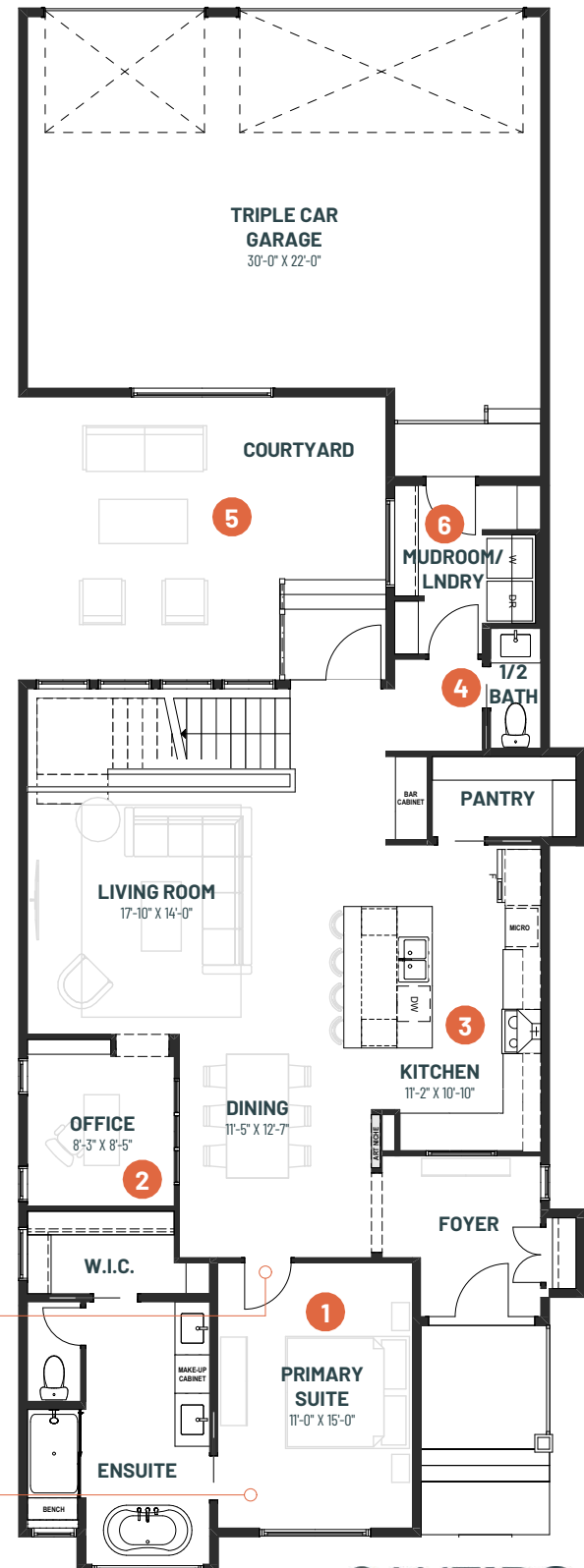
Step into **Bungalow Haven 30**, where modern bungalow living is reimagined for those who value both connection and privacy. This thoughtfully designed single-level home features an expansive open-concept kitchen, dining, and living area—perfect for lively gatherings, family celebrations, or quiet evenings in.

A signature breezeway links the home directly to the spacious rear triple car garage, creating a sheltered transition and framing a private courtyard. Whether you're hosting friends or enjoying a peaceful morning coffee, this unique indoor-outdoor flow brings natural light and fresh air into the heart of your home.

The primary suite offers a tranquil retreat with a generous ensuite and walk-in closet, while a dedicated office provides space for productivity or hobbies. A well-appointed mudroom, ample storage, and a convenient half-bath add everyday practicality.

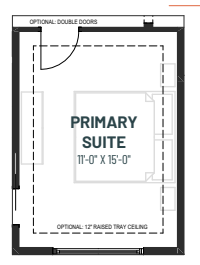
With its harmonious blend of open entertaining spaces and secluded outdoor sanctuary, Bungalow Haven 30 is designed for those who want the best of both worlds—effortless entertaining and a private place to unwind.

MAIN FLOOR
1,511 SQ.FT.

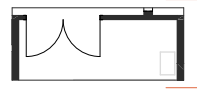


- 1** A primary suite sanctuary with large ensuite and walk-in closet
- 2** A well-appointed office for productivity or hobbies
- 3** Plenty of storage food and kitchen equipment with a walk-in pantry
- 4** Tucked away half-bath for added privacy
- 5** A private courtyard to create your own backyard oasis
- 6** Enclosed breezeway to access your triple car garage without going outdoors

MAIN FLOOR OPTION
Tray Ceiling



MAIN FLOOR OPTION
Dbl Door

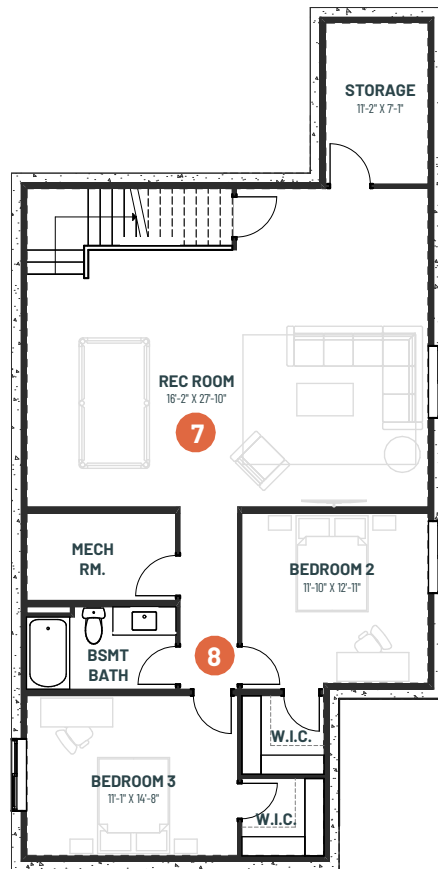




BUNGALOW HAVEN 30

1 BEDROOM | 1.5 BATHS | 1,511 SQ. FT. | 30' POCKET

BASEMENT DEVELOPMENT OPTION 1,300 SQ.FT.



- 7** Spacious recreation room with space for billiards, a lounge and more
- 8** Two additional bedrooms for visiting family and overnight guests