

# METRO NIXON 20 RL

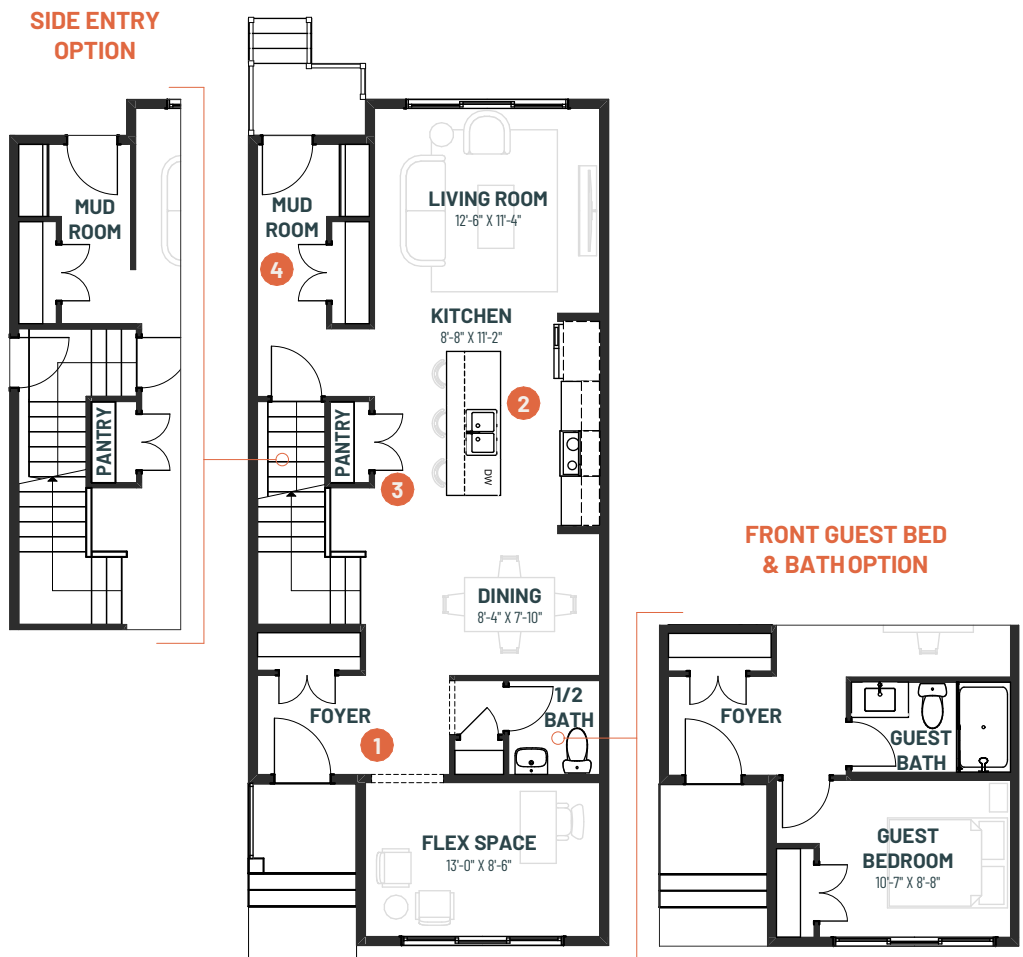
3 BEDROOMS | 2.5 BATHS | 1,703 SQ. FT. | REAR LANE

Welcome to **Metro Nixon 20 RL**, the epitome of versatile living and seamless work-life integration. This rear lane single-family home is thoughtfully designed to accommodate your every need, with a flexible front-facing space ideal for a home office or home-based business.

Step into the heart of the home, where a central galley kitchen awaits, allowing hosts to effortlessly engage with guests while preparing culinary delights. The spacious living room, overlooking the backyard, bathes in natural light, providing a serene backdrop for relaxation and entertainment alike. As you enter through the rear entrance, you'll find a convenient closet bench and hooks, ensuring a clutter-free environment.

Metro Nixon seamlessly combines functionality and style, offering easy access to the front flex space for work or entrepreneurial pursuits, all within the comfort of your own home.

## MAIN FLOOR 873 SQ.FT.



- 1 Spacious front entry with closet storage for your coat and outerwear
- 2 Open concept central kitchen, living and dining for seamless living space flow
- 3 Large pantry with room for all of your kitchen accessories and dry goods
- 4 Rear mudroom with plenty of storage and separate closet for added storage

**cantiro.ca**

Rendering artists Interpretation ONLY & may not be exactly as shown. Floor plans, specifications and dimensions shown are approximate and subject to change without notice. Updated April 2026

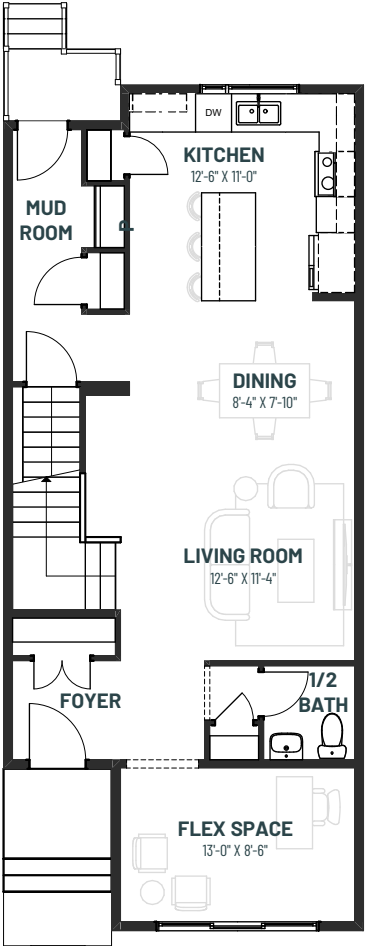
**CANTIRO**  
HOMES

# METRO NIXON 20 RL

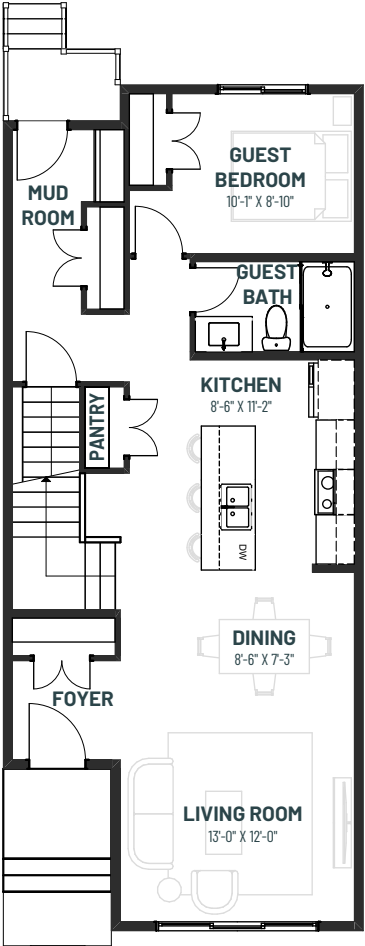
3 BEDROOMS | 2.5 BATHS | 1,703 SQ. FT. | REAR LANE

## MAIN FLOOR OPTIONS

**REAR KITCHEN  
OPTION**



**REAR GUEST  
BEDROOM OPTION**

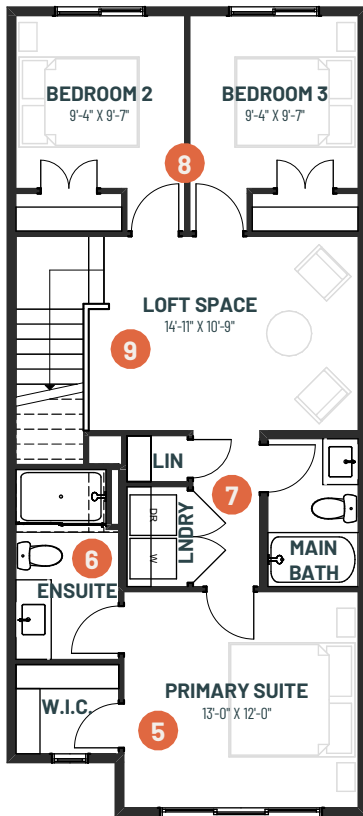




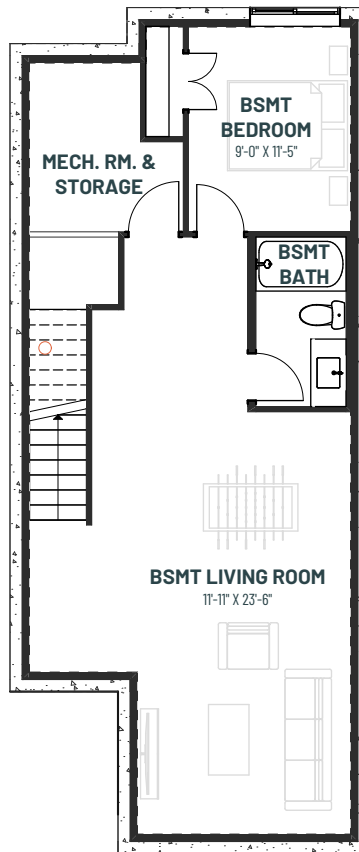
# METRO NIXON 20 RL

3 BEDROOMS | 2.5 BATHS | 1,703 SQ. FT. | REAR LANE

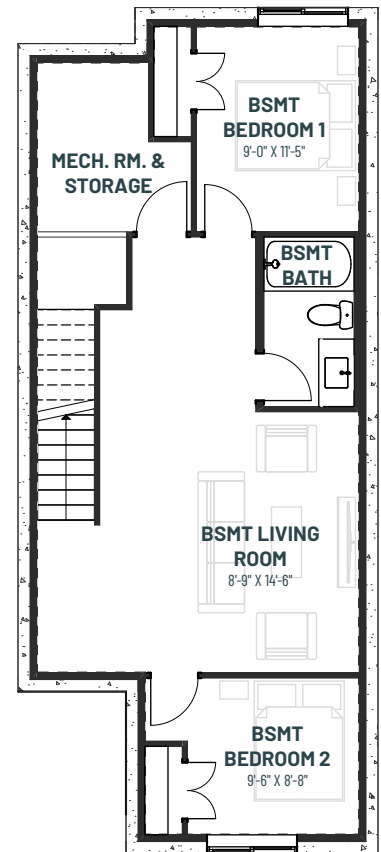
**UPPER FLOOR**  
830 SQ.FT.



**BASEMENT  
DEVELOPMENT OPTION**  
670 SQ.FT.



**2 BEDROOM BASEMENT  
DEVELOPMENT OPTION**



- 5** Oversized primary suite with walk-in-closet featuring natural light
- 6** Spacious ensuite for relaxing after a long day
- 7** Side-by-side upstairs laundry to make laundry days a breeze
- 8** Large closets for your whole wardrobe
- 9** Loft space for bonus family room space, or add a desk and work from home in peace