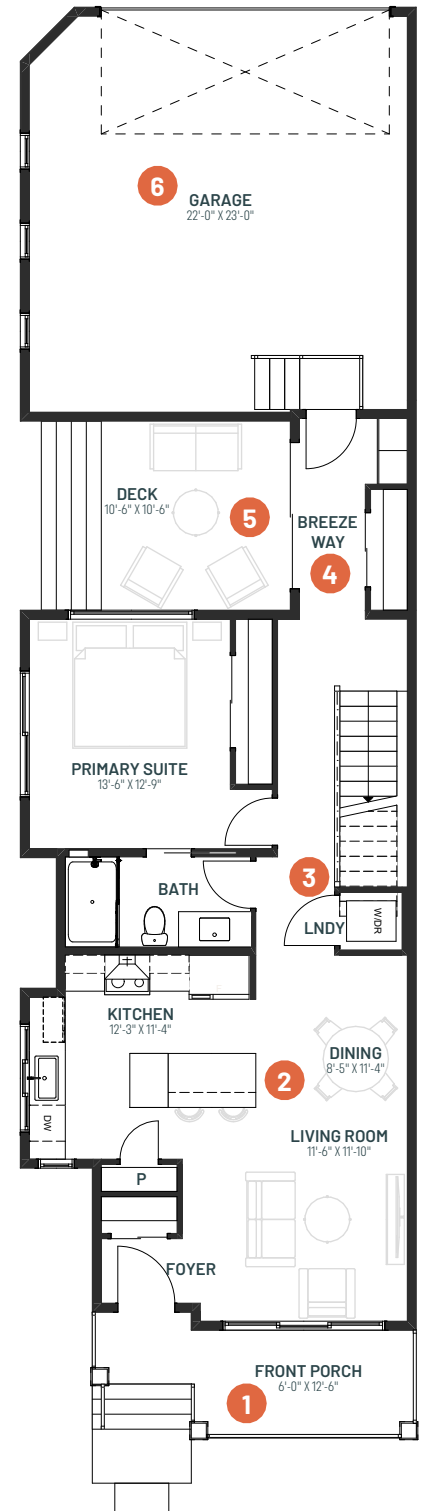


# BUNGALOW RETREAT 22

1 BEDROOM | 1 BATH | 863 SQ. FT. | 22' POCKET

## MAIN FLOOR 863 SQ.FT.



The **Bungalow Retreat 22** is a thoughtfully designed single level home that blends relaxed living with smart functionality. Anchored by an open-concept living and dining area, it is designed to create a natural gathering space for entertaining, everyday life, and quiet moments at home. A generously sized serving bar and easy access to a private deck makes hosting effortless year-round.

The main floor primary suite is positioned as a private escape, offering separation from the home's secondary living spaces. Develop the basement for additional bedrooms, a spacious family room, and ample storage to provide flexibility for guests, hobbies, or growing families. With features like an attached garage, front porch, 9' ceilings, and thoughtful storage throughout, the Bungalow Retreat delivers a calm, comfortable home designed to feel like a true retreat.

- 1 Welcoming front porch for a charming first impression, the perfect spot to relax and enjoy your morning coffee
- 2 Open-concept living seamlessly connects the kitchen, dining, and living areas for effortless everyday living and memorable gatherings
- 3 Conveniently located laundry keeps daily routines simple and efficient, right where you need it most
- 4 A thoughtfully designed breezeway with added storage provides a functional transition space while keeping outdoor gear neatly organized
- 5 Spacious deck makes outdoor entertaining easy, from casual weeknight meals to summer barbecues
- 6 A rear-attached garage with direct home access offers added privacy, storage, and year-round comfort



# BUNGALOW RETREAT 22

1 BEDROOM | 1 BATH | 863 SQ. FT. | 22' POCKET

## BASEMENT DEVELOPMENT PLAN 637 SQ.FT.

