



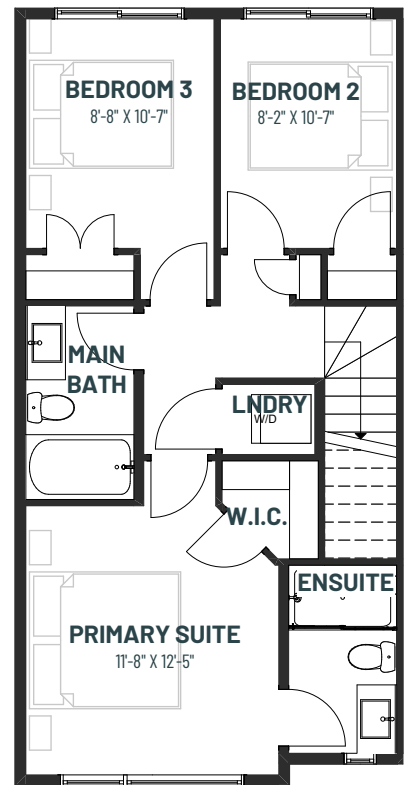
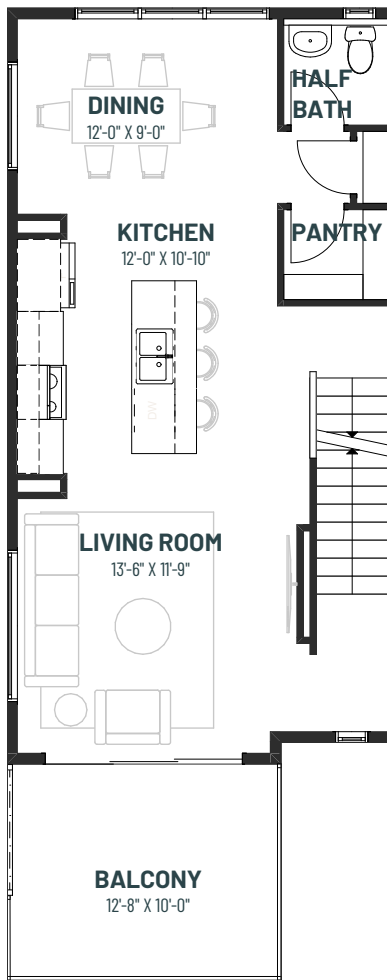
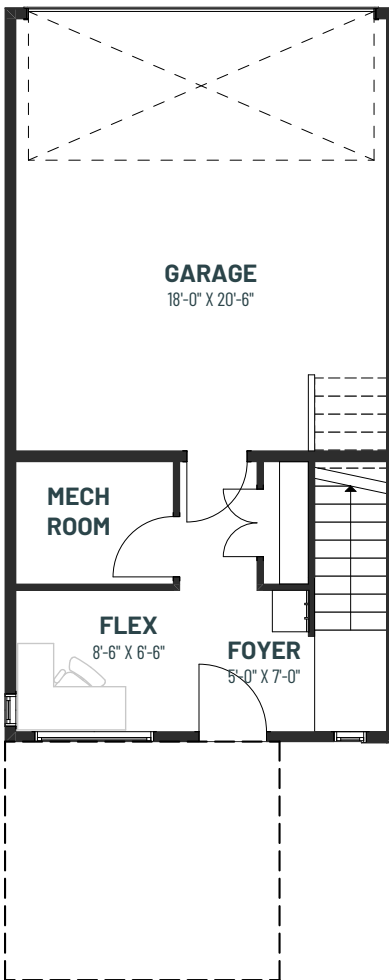
METRO TAILORED 18-S

3 BEDROOMS | 2.5 BATHS | 1,419 SQ. FT.
STEEL-FRAME TOWNHOME

GROUND FLOOR
194 SQ.FT.

MAIN FLOOR
623 SQ.FT.

SECOND FLOOR
602 SQ.FT.



For more information on Steel-Frame Homes, visit:



cantiro.ca/steel



Rendering artists Interpretation ONLY & may not be exactly as shown. Floor plans, specifications and dimensions shown are approximate and subject to change without notice. Updated March 2026