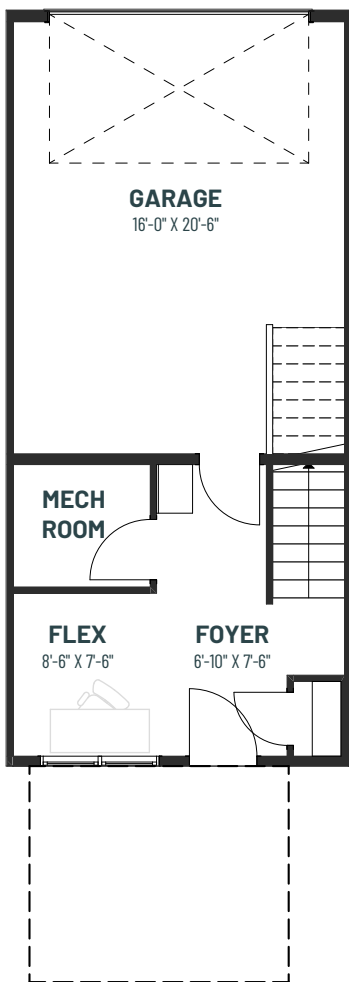




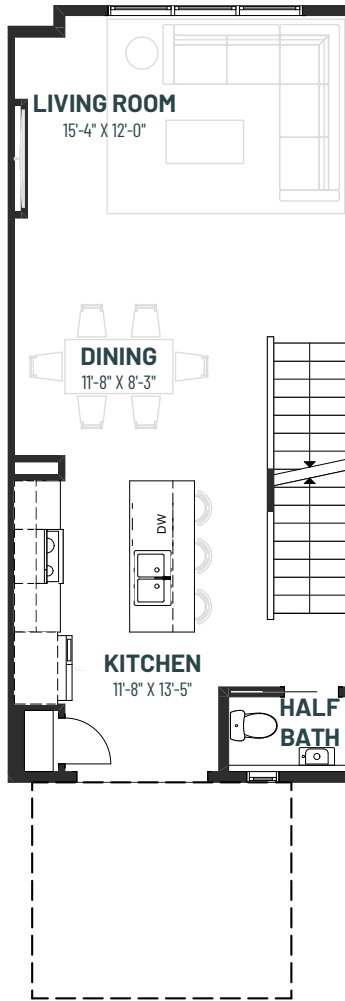
# METRO DISTINCT 16-S

2 BEDROOMS | 2.5 BATHS | 1,282 SQ. FT.  
STEEL-FRAME TOWNHOME

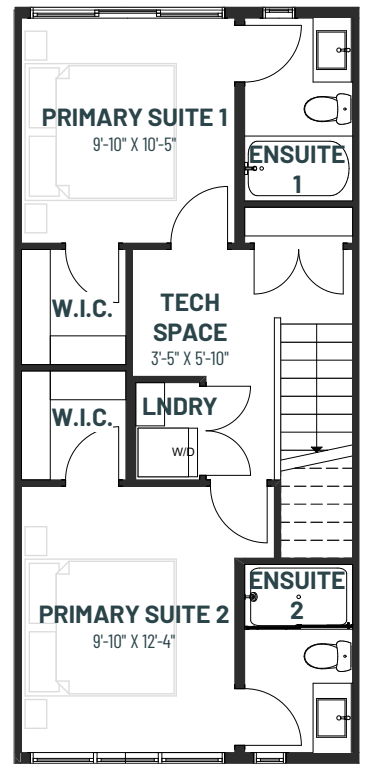
**GROUND FLOOR**  
190 SQ.FT.



**MAIN FLOOR**  
571 SQ.FT.



**SECOND FLOOR**  
521 SQ.FT.



For more information on  
Steel-Frame Homes, visit:



[cantiro.ca/steel](https://cantiro.ca/steel)



Rendering artists Interpretation ONLY & may not be exactly as shown. Floor plans, specifications and dimensions shown are approximate and subject to change without notice. Updated March 2026