

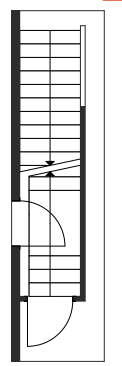
FAMILY GENERATIONS 24-S

3 BEDROOMS | 2.5 BATHS | 2,458 SQ. FT. | 24' POCKET STEEL-FRAME HOME

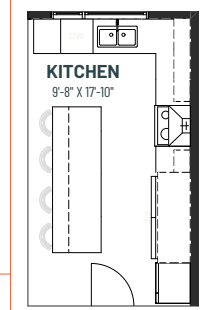
Introducing **Family Generations 24-S**: A haven where family bonds are cherished, and generations come together under one roof. With a dining area that easily fits 10 people or more and a kitchen designed for preparing food together, it's the perfect setting for family gatherings and shared meals. The large pantry can be converted into a spice kitchen, catering to culinary enthusiasts. A main floor den can serve as a homework room, an additional guest room, or even a main floor bedroom with a full bath for families with accessibility or senior-friendly needs. There's even an option for a private side entrance leading to a basement secondary suite, ideal for helping other family members to get their start or save for their own home. Two spacious secondary bedrooms provide ample space for kids to focus on school work, while the large primary suite offers a retreat for self-care after tending to everyone else's needs. Family Generations 24 is more than just a home; it's a place where family values and traditions are honored, and memories are made for generations to come.

MAIN FLOOR
1,080 SQ.FT.

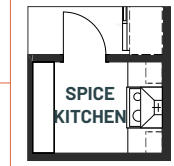
MAIN FLOOR OPTION
Side Entry



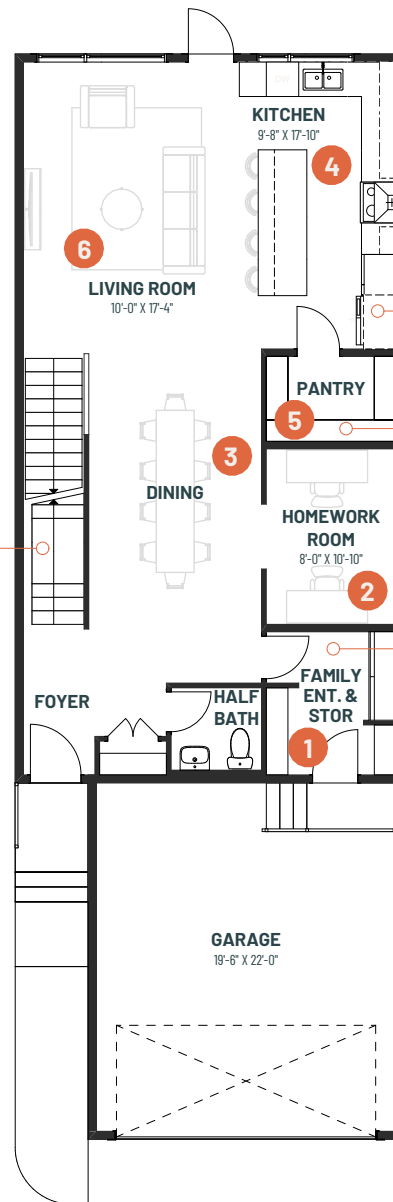
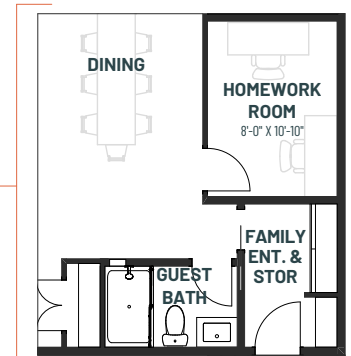
MAIN FLOOR OPTION
Side- By Side Fridge



MAIN FLOOR OPTION
Spice Kitchen



MAIN FLOOR OPTION
Homework Room & Full Bath



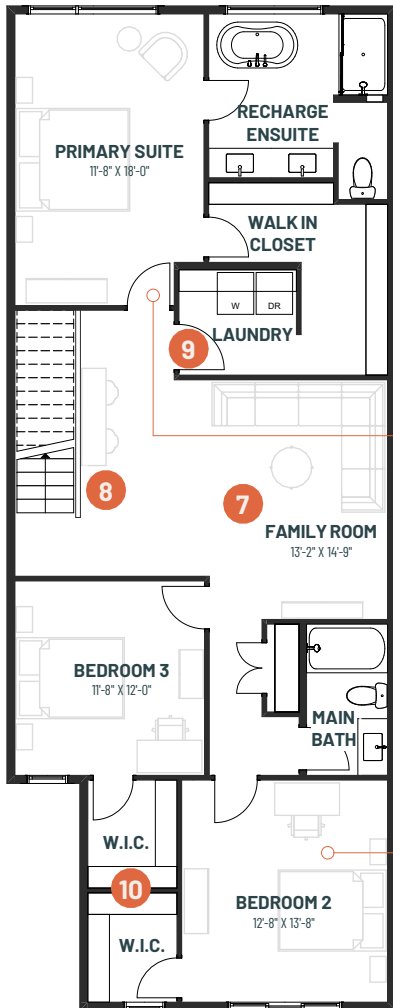
- 1** Functional family entrance with additional storage space for keeping belongings organized and getting everyone in and out of the house with ease
- 2** Main floor den that's perfect as a homework station or space to host overnight guests
- 3** Generous dining area that easily fits 10 or more for dinners with the extended family
- 4** Large kitchen designed for preparing your favourite recipes together
- 5** Generous walk-in to make storing all your ingredients and kitchen tools easy and accessible
- 6** Oversized living room with space for everyone to put up their feet



FAMILY GENERATIONS 24-S

3 BEDROOMS | 2.5 BATHS | 2,458 SQ. FT. | 24' POCKET STEEL-FRAME HOME

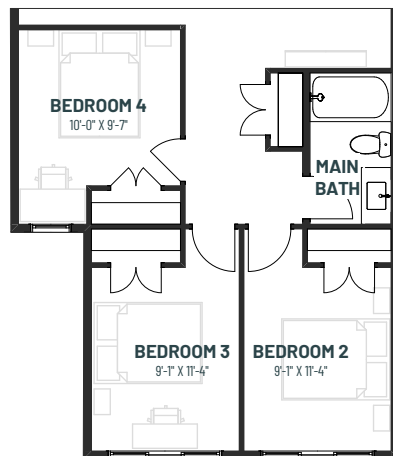
SECOND FLOOR
1,378 SQ.FT.



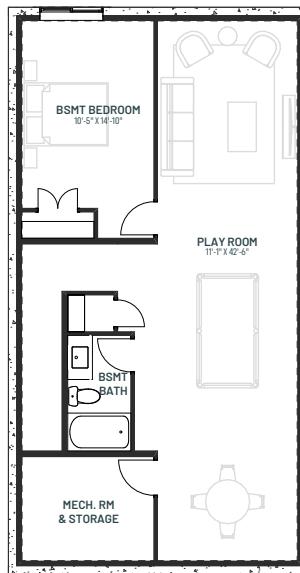
SECOND FLOOR OPTION
DOUBLE DOOR



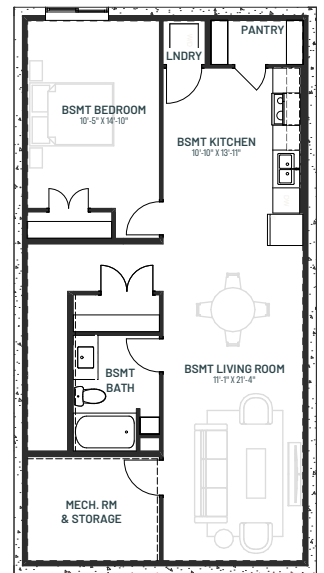
SECOND FLOOR OPTION
FOURTH BEDROOM



BASEMENT DEVELOPMENT OPTION
894 SQ.FT.



SECONDARY SUITE OPTION
894 SQ.FT.



- 7** Spacious family room for sharing quality time together
- 8** Flexible space for additional homework stations
- 9** Purposeful laundry room with extra storage space for when you need it
- 10** Large secondary bedrooms with walk-in closets for every member of the family

For more information on Steel-Frame Homes, visit:



cantiro.ca/steel