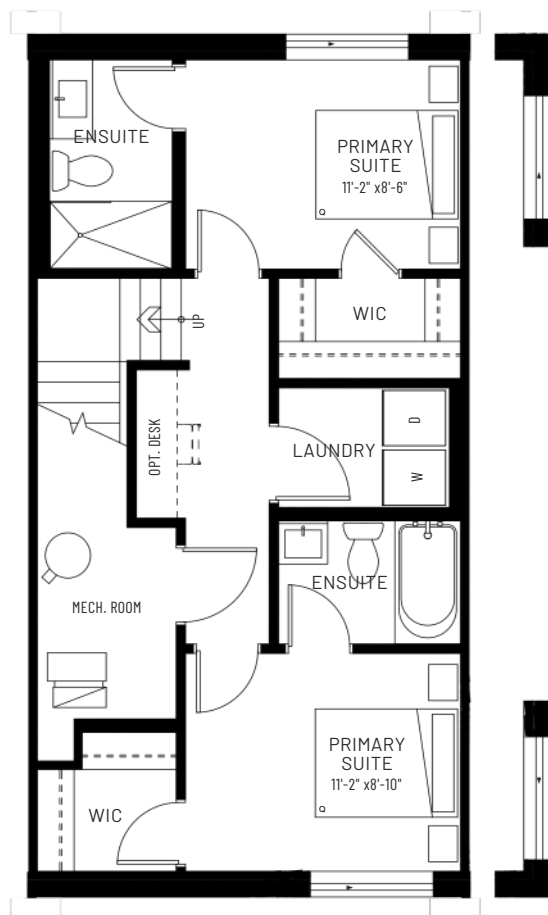




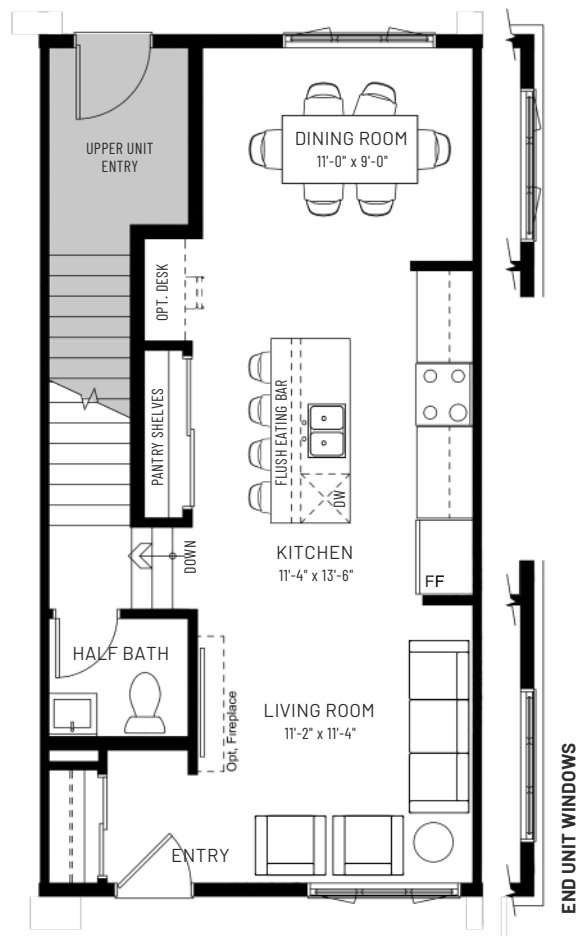
ARBOUR LAKE WEST

METRO AGILE 18

2 BEDROOMS | 2.5 BATHS | 1,005 SQ.FT.



BASEMENT
487 SQ.FT.



GROUND FLOOR
518 SQ.FT.



Available in Buildings 8 and 11

*In end units, the window is relocated to the side wall and is not an additional window beyond what is shown.

cantiro.ca/arbours-lake-west

Rendering artists Interpretation ONLY & may not be exactly as shown. Floorplans, specifications and dimensions shown are approximate and subject to change without notice. Updated December 2025.

CANTIRO
HOMES