

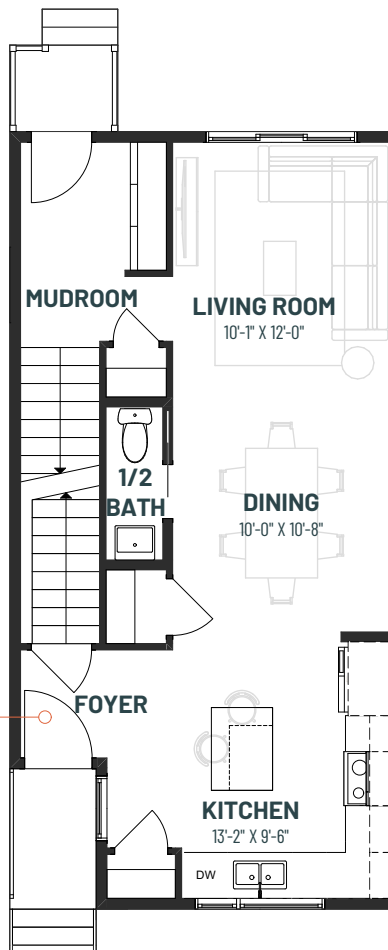
METRO SWITCH 18 TH

3 BEDROOMS | 2.5 BATHS | 1,280 SQ. FT. | TOWNHOME

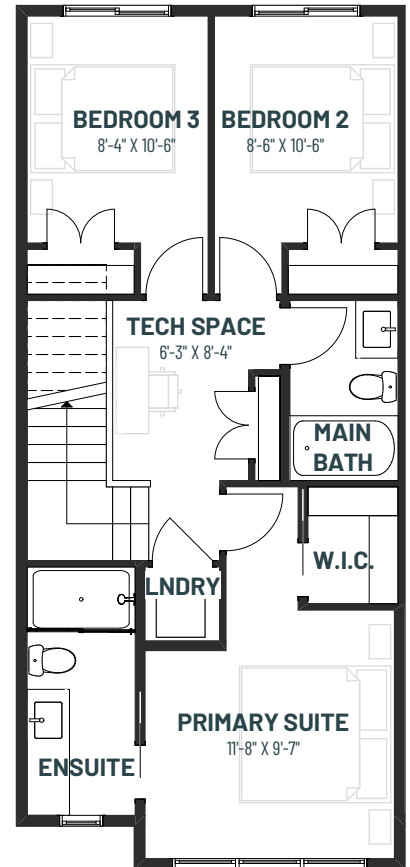
Metro Switch 18 TH brings together efficient design and adaptable spaces, empowering homeowners to switch between different lifestyles and needs with ease. The open-concept main floor features a front kitchen that seamlessly flows into a flexible dining area and a comfortable living room, complete with a convenient rear mudroom. Upstairs, the primary suite includes an ensuite and walk-in closet, alongside two additional bedrooms and a tech space ideal for a home office or study area.

With the Equity Personalization Package, you can easily add a separate front entrance for a basement income suite of your choice - ideal for rental income, multi-generational living, or hosting overnight visitors.

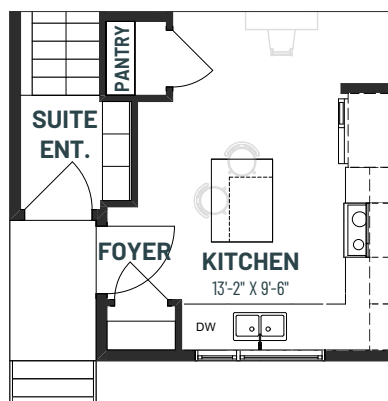
MAIN FLOOR
622 SQ.FT.



SECOND FLOOR
658 SQ.FT.



MAIN FLOOR OPTION
Secondary Suite Entry Option

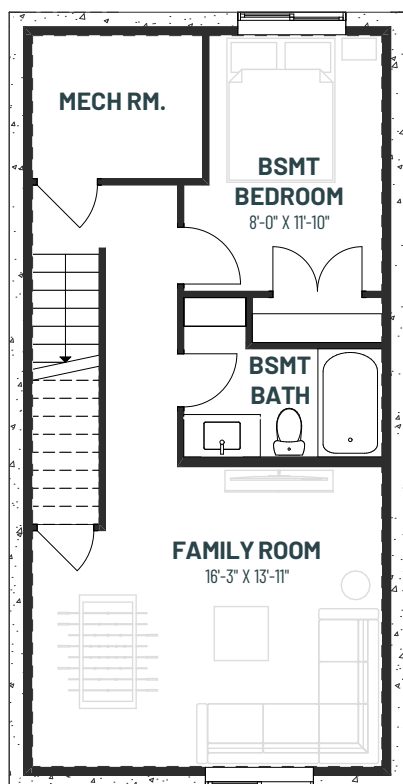




METRO SWITCH 18 TH

3 BEDROOMS | 2.5 BATHS | 1,280 SQ. FT. | TOWNHOME

BASEMENT DEVELOPMENT OPTION 531 SQ.FT.



SECONDARY SUITE DEVELOPMENT OPTION 531 SQ.FT.

