

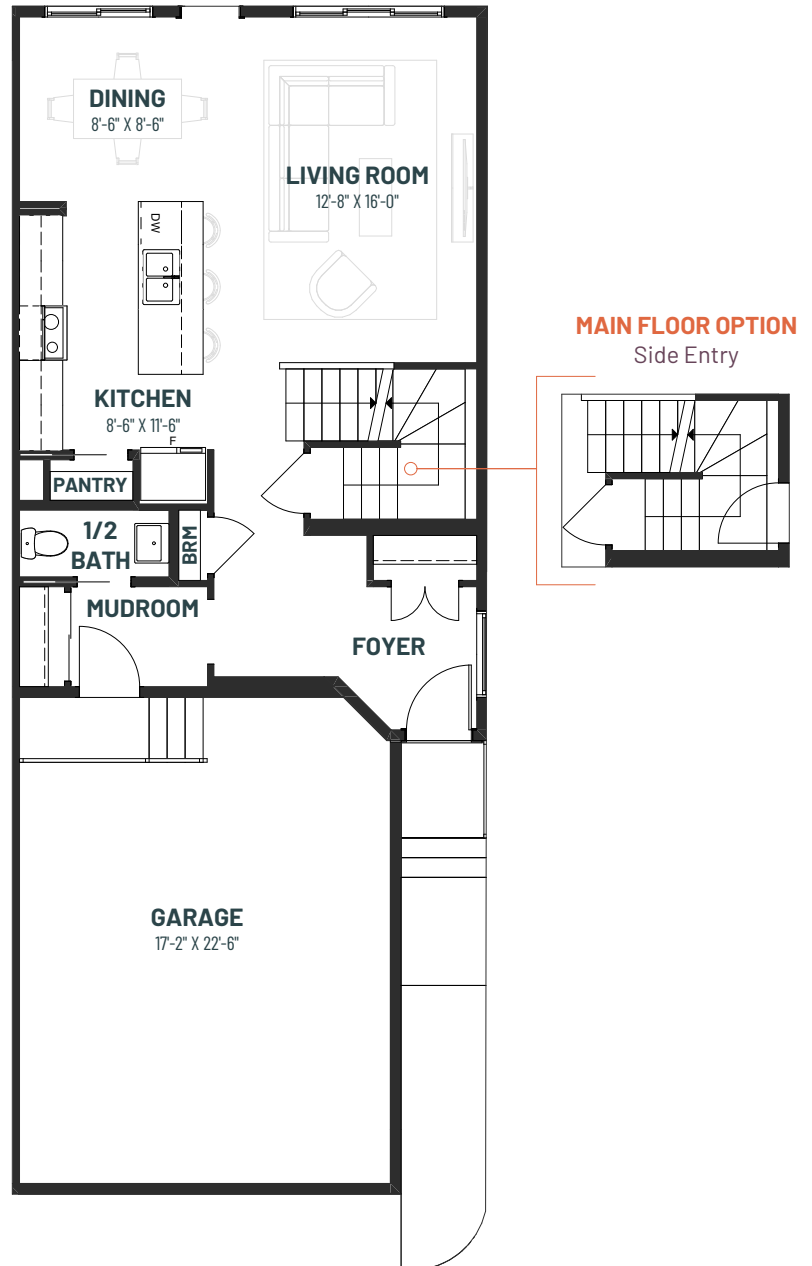
METRO ACHIEVE 22 DX

3 BEDROOMS | 2.5 BATHS | 1,703 SQ. FT. | DUPLEX

MAIN FLOOR 714 SQ.FT.

Metro Achieve 22 DX brings the popular Achieve layout from the Life Collection into a duplex home, offering a spacious and functional design to leverage a productive lifestyle for growing families and busy professionals. The main floor features a welcoming foyer, open-concept kitchen with pantry, dining area, and living room-an amazing space for both for everyday living and entertaining.

Upstairs, the primary suite includes an ensuite and walk-in closet, along with two additional bedrooms, a full bathroom, convenient laundry room, and a bonus room ideal for family time or a quiet retreat. The optional basement development adds a recreation room, fourth bedroom, and full bath, creating even more space for guests, hobbies, or multi-generational living. Metro Achieve 22 DX combines the versatility of a duplex with the proven comfort and flow of Cantiro's most loved Achieve models.

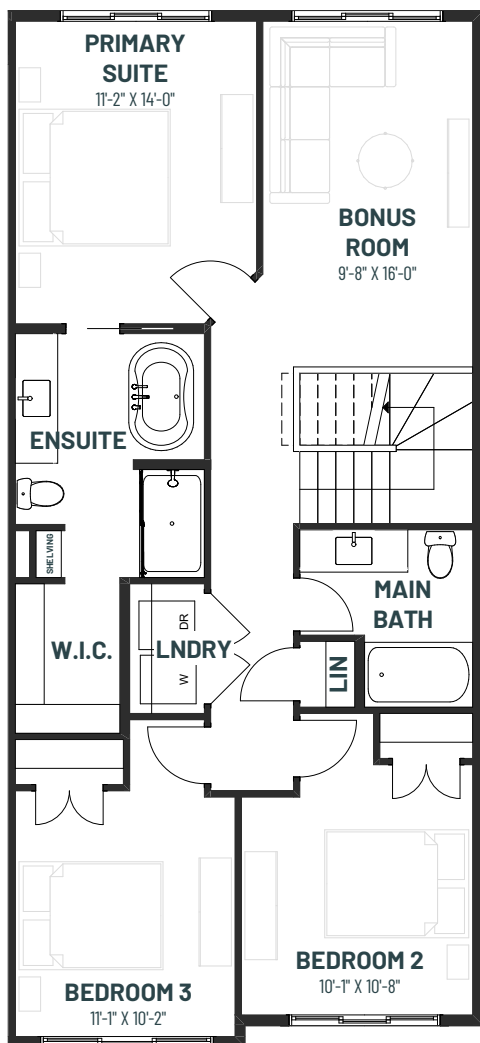




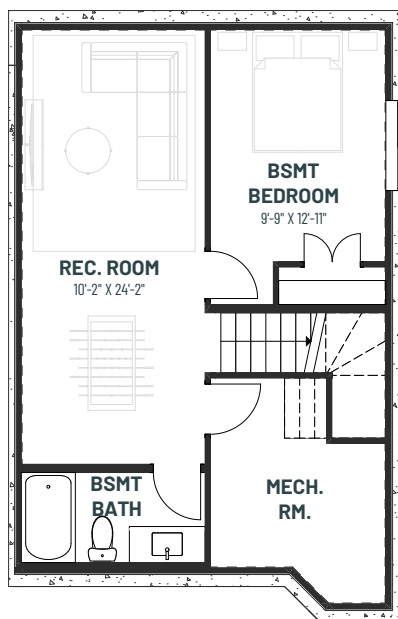
METRO ACHIEVE 22 DX

3 BEDROOMS | 2.5 BATHS | 1,703 SQ. FT. | DUPLEX

SECOND FLOOR
989 SQ.FT.



**BASEMENT
DEVELOPMENT OPTION**
547 SQ.FT.



SECONDARY SUITE OPTION
547 SQ.FT.

