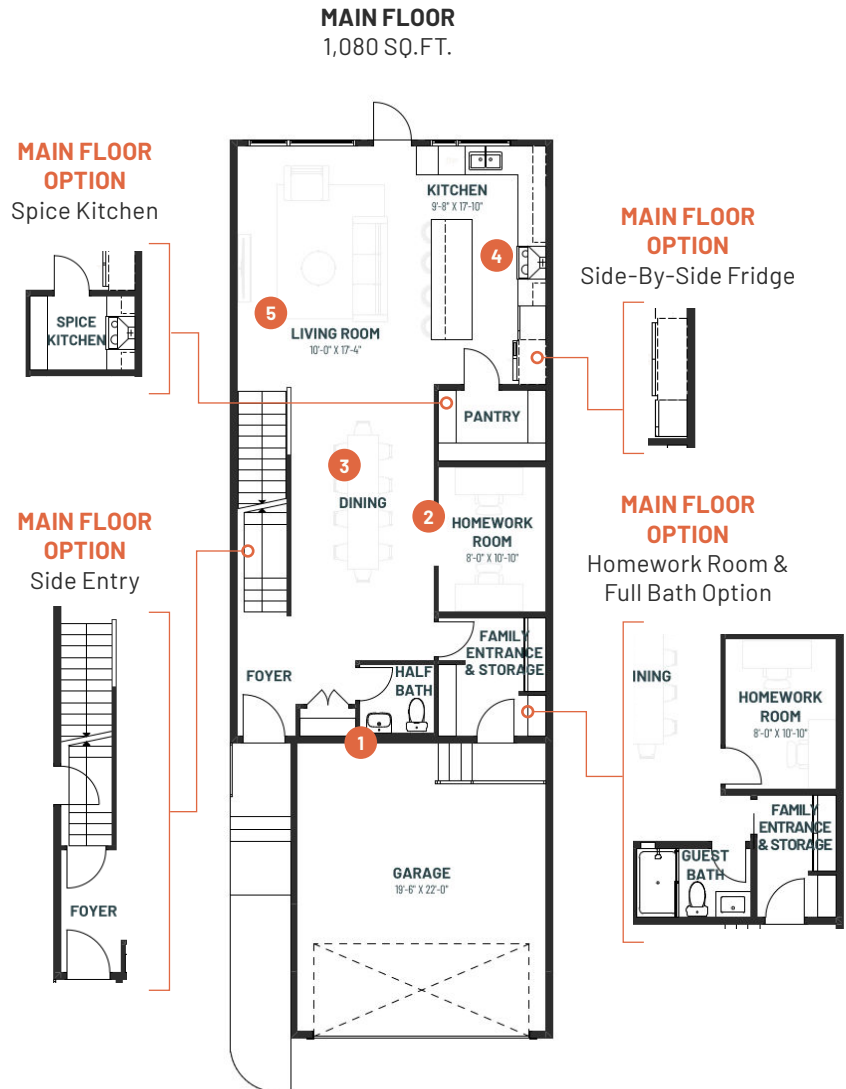


FAMILY GENERATIONS 24

3 BEDROOMS | 2.5 BATHS | 2,458 SQ.FT. | 24' POCKET

You have a large extended family and you're everyone's "home away from home."

Family Generations includes a dining area that easily fits 12 people or more and a kitchen designed for preparing food together. The main floor den can be converted into a homework room or an additional room for overnight guests. Two spacious bedrooms give the kids space to focus on schoolwork without disruption and the large primary suite is the perfect place to take care of yourself after taking care of everyone else.



- 1** Functional family entrance for getting everyone in and out of the house with ease
- 2** Main floor den that's perfect as a homework station or space to host overnight guests
- 3** Generous dining area that easily fits 12 or more for dinners with the extended family
- 4** Large kitchen designed for preparing your favourite recipes together
- 5** Oversized living room with space for everyone to put up their feet



FAMILY GENERATIONS 24

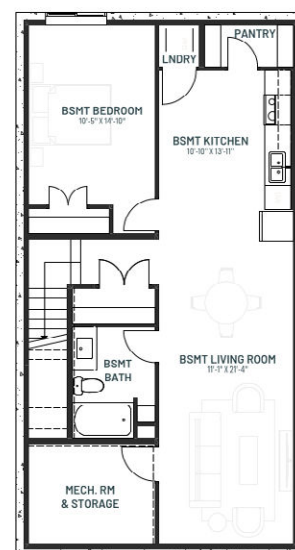
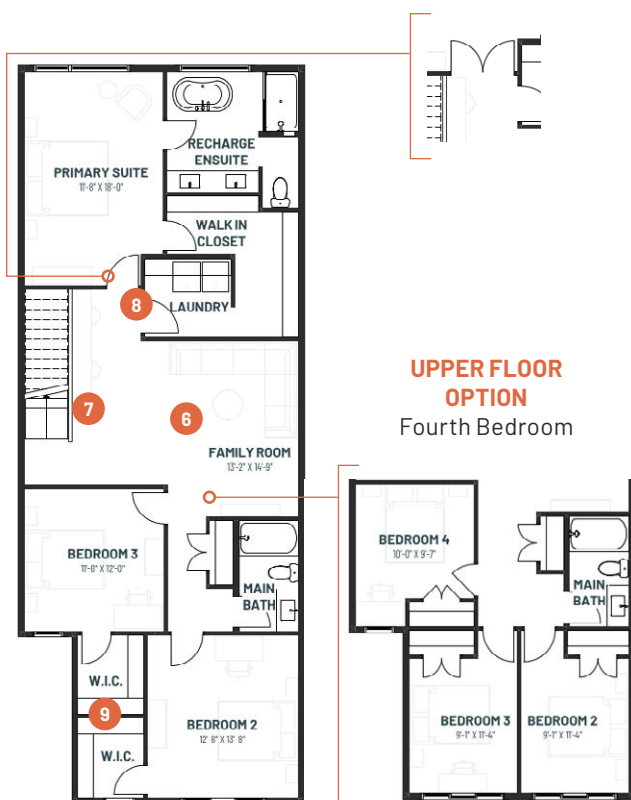
3 BEDROOMS | 2.5 BATHS | 2,454-2,458 SQ.FT.
24' POCKET

UPPER FLOOR
1,378 SQ.FT.

**UPPER FLOOR
OPTION**
Double Door

**BASEMENT
DEVELOPMENT OPTION**
894 SQ.FT.

**SECONDARY
SUITE OPTION**
Basement Development
894 SQ.FT.



6 Spacious family room for sharing quality time together

7 Flexible space for additional homework stations

8 Purposeful laundry room with extra storage space for when you need it

9 Large secondary bedrooms with walk-in closets for every member of the family