

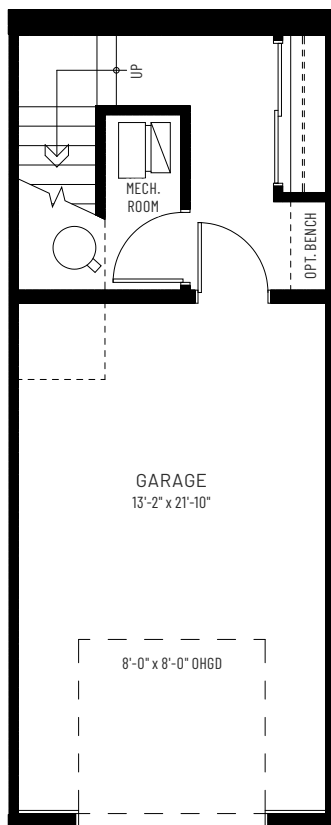


ARBOUR LAKE WEST

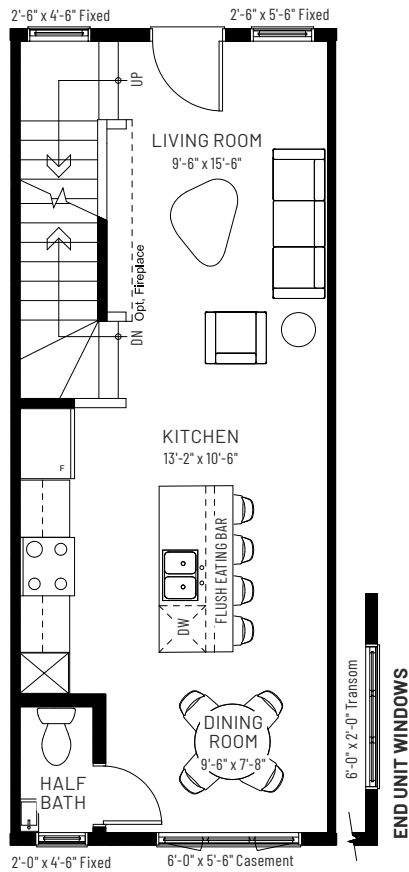
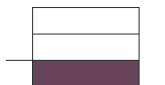
# METRO FIT 14

TIERED ENTRY

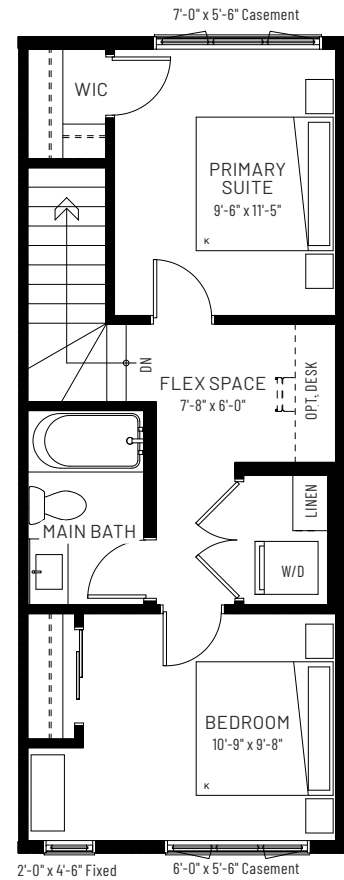
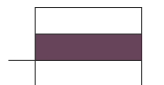
2 BEDROOMS | 1.5 BATHS | 1,072 SQ.FT.



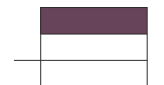
**GROUND FLOOR**  
135 SQ.FT.



**MAIN FLOOR**  
490 SQ.FT.



**UPPER FLOOR**  
447 SQ.FT.



Available in Buildings 3, 4, 5, 14, 15 and 16

[cantiro.ca/arbours-lake-west](https://cantiro.ca/arbours-lake-west)

Rendering artists Interpretation ONLY & may not be exactly as shown. Floor plans, specifications and dimensions shown are approximate and subject to change without notice. Updated April 2025.

**CANTIRO**  
HOMES

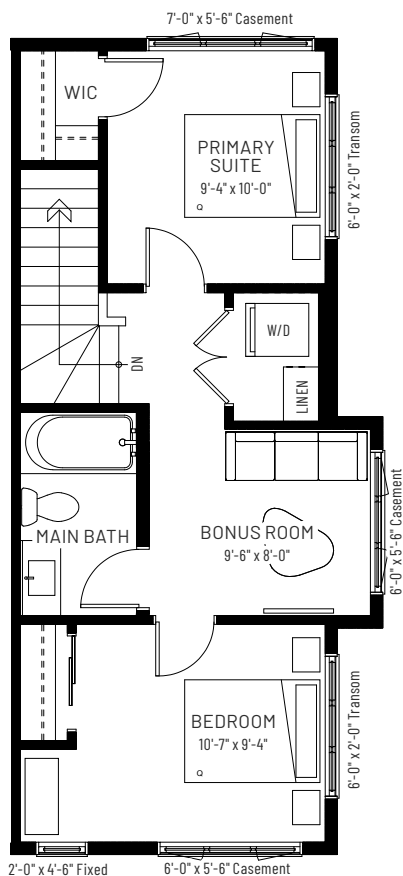


ARBOUR LAKE WEST

# METRO FIT 14

TIERED ENTRY

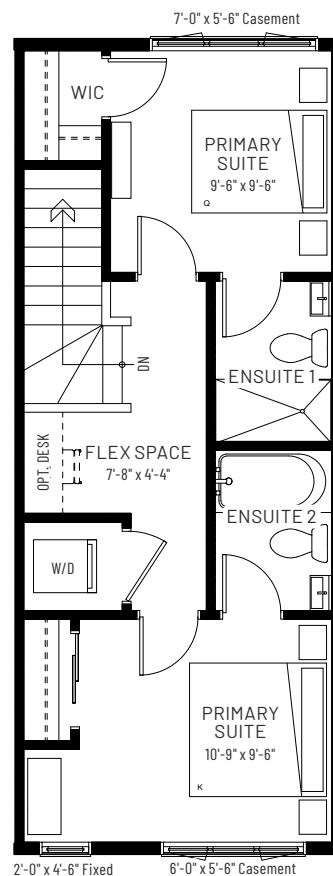
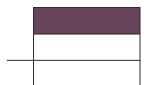
2 BEDROOMS | 1.5 BATHS | 1,072 SQ.FT.



## UPPER FLOOR (END UNIT)

466 SQ.FT.

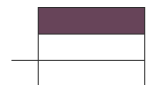
Available only in Buildings 14, 15 and 16



## UPPER FLOOR OPTION

447 SQ.FT.

Not available in end units in Buildings 14, 15 and 16



[cantiro.ca/arbours-lake-west](https://cantiro.ca/arbours-lake-west)

Rendering artists Interpretation ONLY & may not be exactly as shown. Floor plans, specifications and dimensions shown are approximate and subject to change without notice. Updated April 2025.

**CANTIRO**  
HOMES