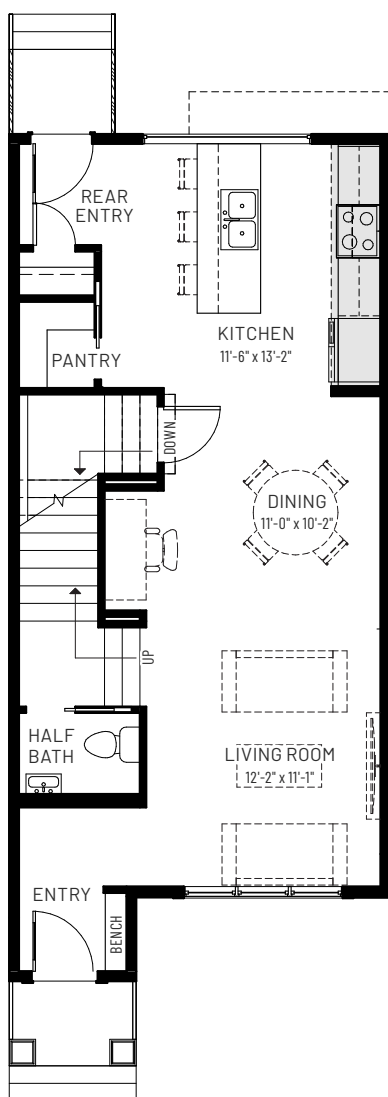


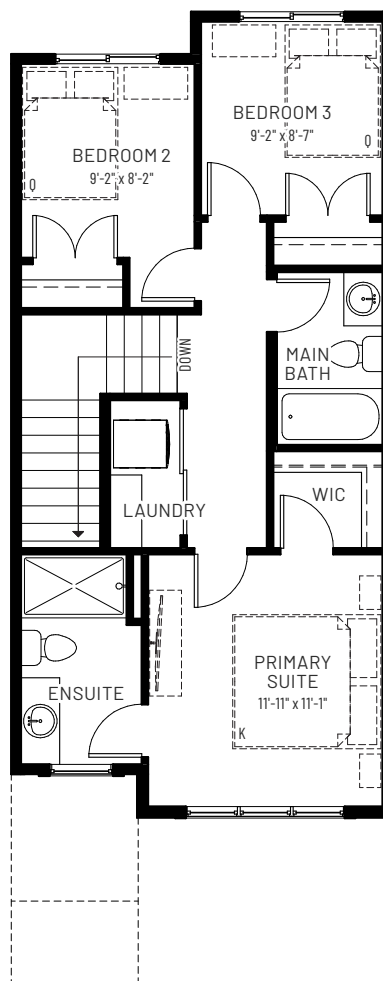


# METRO ADAPT 18

3 BEDROOMS | 2.5 BATHS | 1,272 SQ.FT.



**MAIN FLOOR**  
672 SQ.FT.



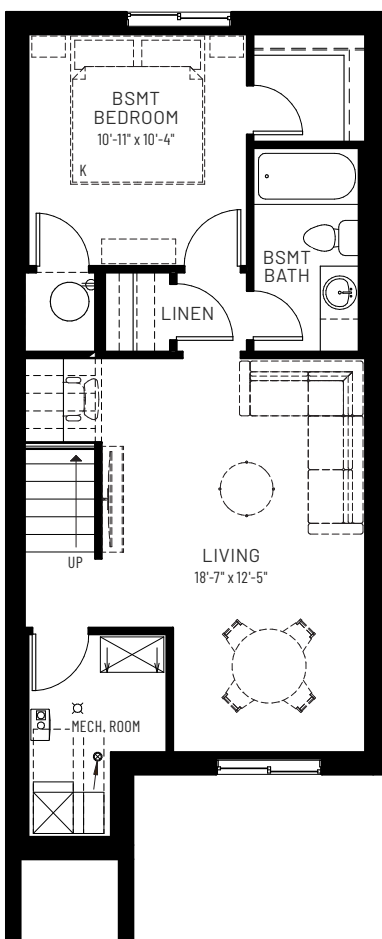
**UPPER FLOOR**  
600 SQ.FT.



EQUITY PERSONALIZATION PACKAGE

# METRO ADAPT 18

1 BEDROOM | 1 BATHS | 523 SQ.FT.



**OPTIONAL BASEMENT DEVELOPMENT**  
523 SQ.FT.

**cantiro.ca**

Rendering artists Interpretation ONLY & may not be exactly as shown. Floor plans, specifications and dimensions shown are approximate and subject to change without notice. Updated January 2025

**CANTIRO**  
HOMES