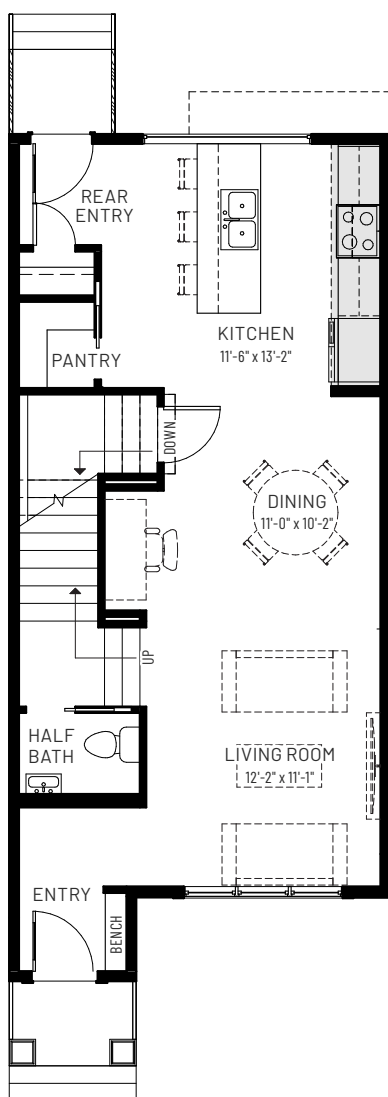


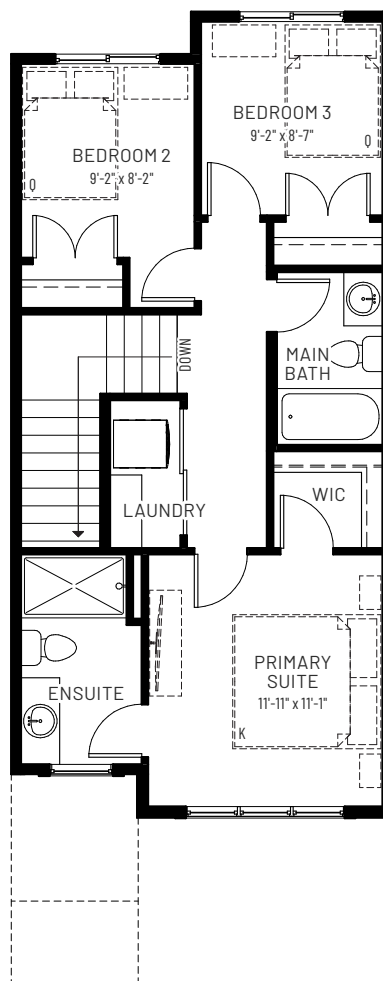


METRO ADAPT 18

3 BEDROOMS | 2.5 BATHS | 1,272 SQ.FT.



MAIN FLOOR
672 SQ.FT.



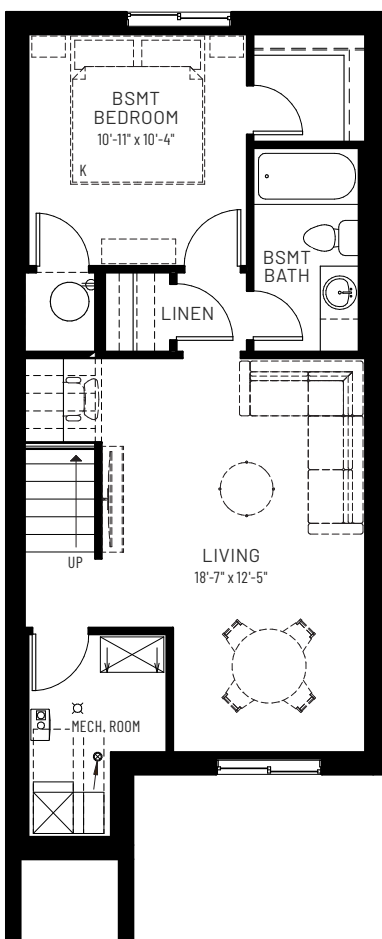
UPPER FLOOR
600 SQ.FT.



EQUITY PERSONALIZATION PACKAGE

METRO ADAPT 18

1 BEDROOM | 1 BATHS | 523 SQ.FT.



OPTIONAL BASEMENT DEVELOPMENT
523 SQ.FT.

cantiro.ca

Rendering artists Interpretation ONLY & may not be exactly as shown. Floor plans, specifications and dimensions shown are approximate and subject to change without notice. Updated January 2025

CANTIRO
HOMES