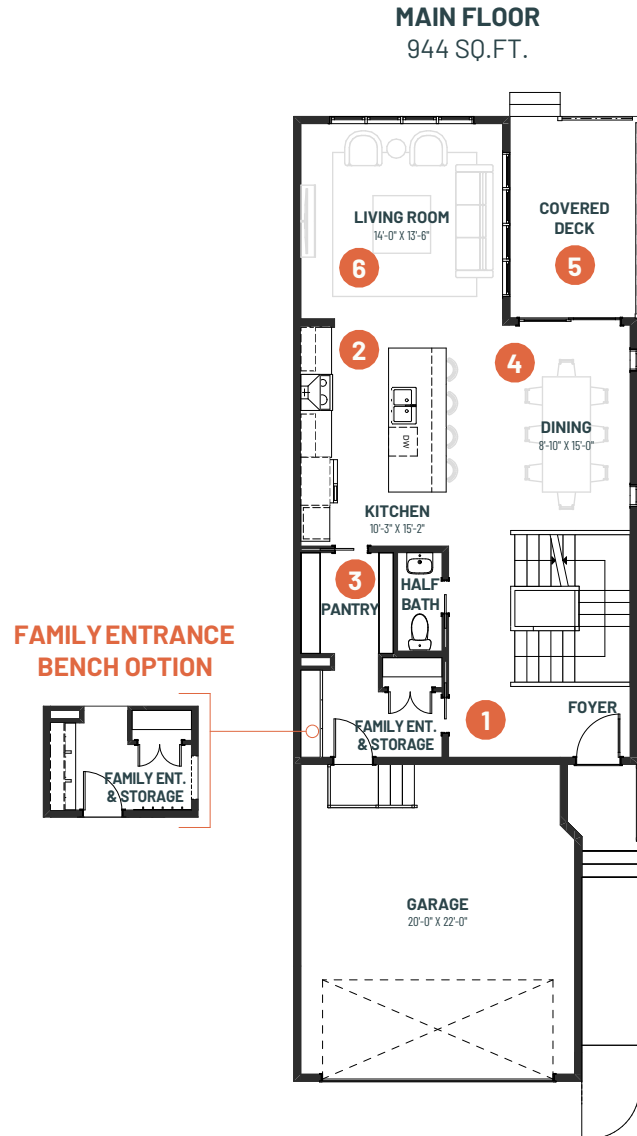


# ENTERTAIN VISTA 24

3 BEDROOMS | 2.5 BATHS | 2,151 SQ. FT. | 24' POCKET

Welcome to **Entertain Vista 24**, where modern elegance meets natural tranquility. Step through the covered veranda into a spacious foyer, open to the soaring ceiling above, welcoming you with an abundance of light and airiness. As you enter, your gaze is drawn to the dedicated dining area, also open to the floor above, offering a seamless transition to the outdoors through patio windows onto the expansive covered deck. The open concept design effortlessly connects the dining area, large island kitchen, and living room, creating a harmonious flow ideal for entertaining or simply enjoying everyday living. The living room, bathed in sunlight from oversized windows overlooking the deck and backyard, features a cozy electric fireplace, perfect for cooler evenings. Upstairs, the sense of openness continues with large windows in the media room, bedrooms, and primary ensuite, while open-to-below areas add an additional dimension of spaciousness. Entertain Vista 24 is not just a home; it's a sanctuary where natural light, open spaces, and modern comfort converge to create the ultimate living experience.



**1** Guest foyer with ample storage and open to above feature for an airy and grand welcome

**3** Oversized walkthrough pantry to make storing all your ingredients and kitchen tools easy and accessible

**5** Expansive outdoor lounge to enjoy the warm summer evenings with your friends and family

**2** Kitchen with large island for dinner party prep and space for appetizers

**4** Striking open to above dining area that comfortably seats over 8 guests

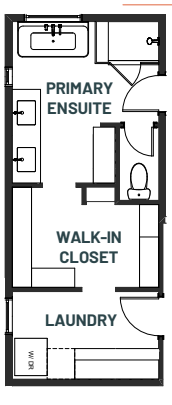
**6** Generous living room to enjoy great company and conversations



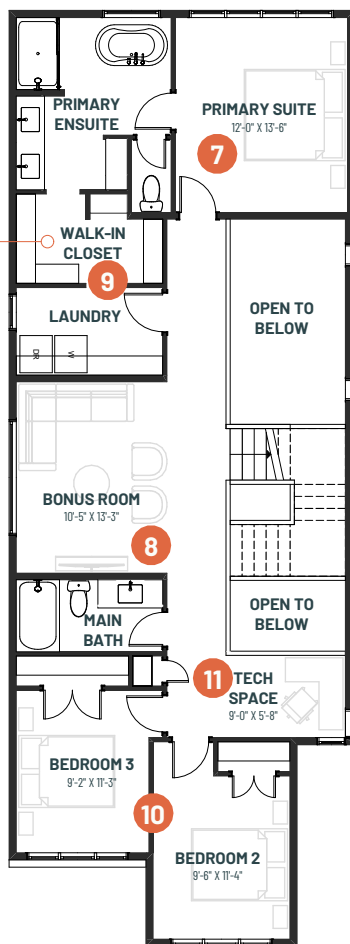
# ENTERTAIN VISTA 24

3 BEDROOMS | 2.5 BATHS | 2,151 SQ. FT. | 24' POCKET

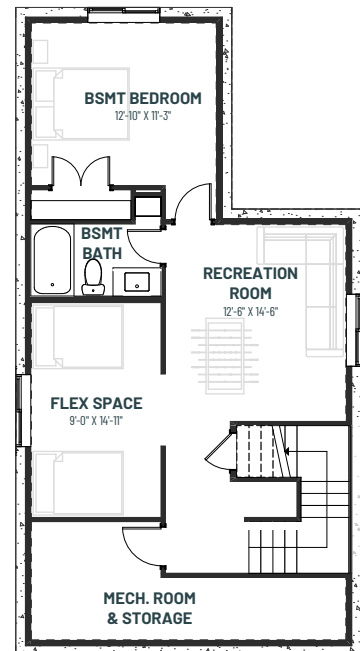
## PRIMARY ENSUITE OPTION



## UPPER FLOOR 1,207 SQ.FT.



## BASEMENT DEVELOPMENT OPTION 720 SQ.FT.



- 7** Spacious primary suite and ensuite to put up your feet after a busy day
- 8** Bonus room with open to below to keep the openness flowing throughout the home
- 9** Convenient ensuite adjacent, walk-through laundry room to make laundry day a breeze
- 10** Large secondary bedrooms with walk-in closets for every member of the family
- 11** Tucked away tech room that is the ideal for a dedicated work space