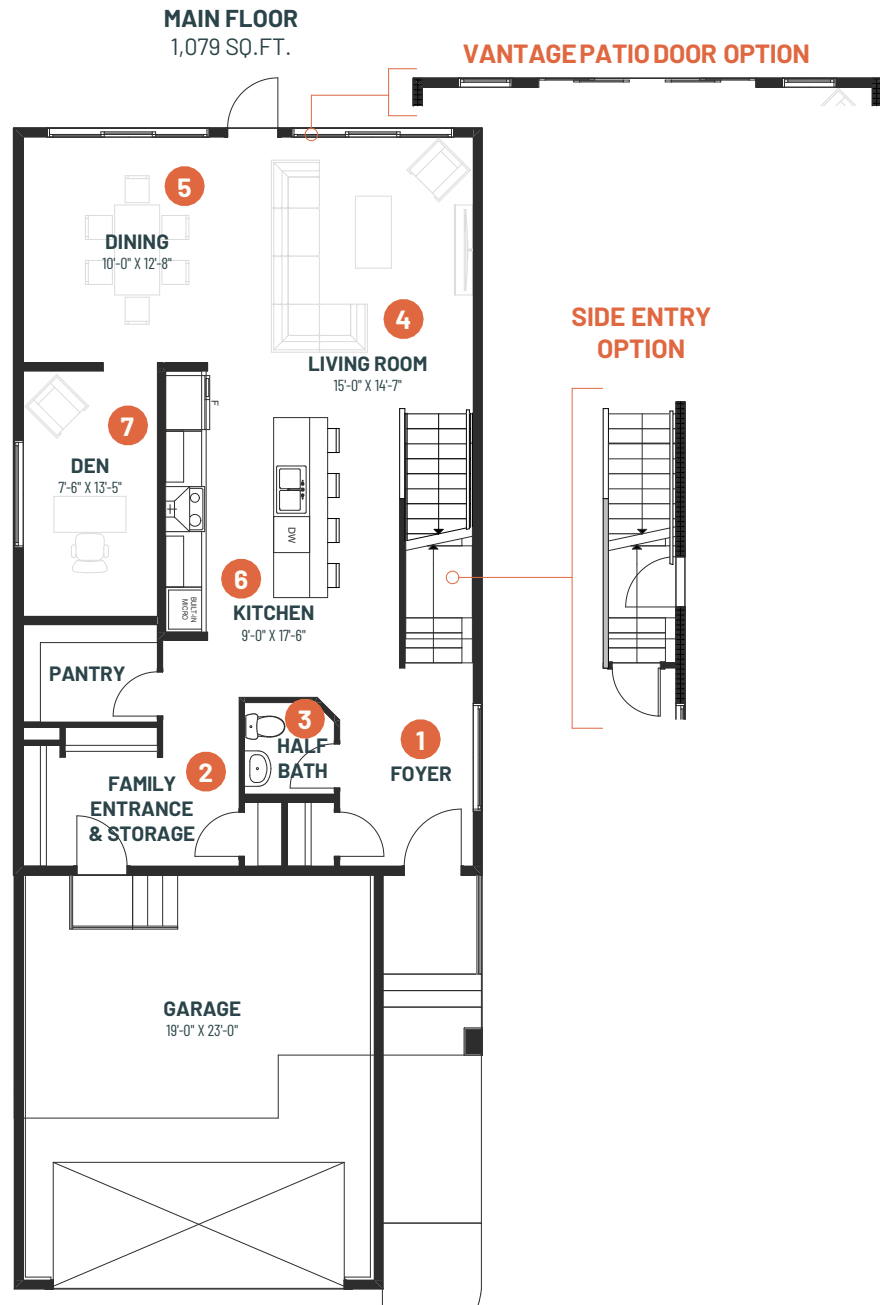


ENTERTAIN IMPRESSION 26

3 BEDROOMS | 2.5 BATHS | 2,429 SQ. FT. | 26' POCKET

Where every day feels like a celebration and every gathering is an event to remember. **Entertain Impression 26** is designed for those who love to host and entertain, effortlessly blending style and functionality. With an oversized kitchen island and a spacious dining area, it's the perfect setting for preparing and showcasing meals with flair.

The main floor flex area offers versatility, whether it's a cozy reading nook, a craft room, or a home office. Upstairs, a recreation room provides space for casual gatherings or a kids' party of their own. Oversized windows flood the great room, dining area, and kitchen with natural light, creating an inviting atmosphere for guests. With three bedrooms, including a luxurious primary suite, Entertain Impression 26 is not just a home—it's the ultimate venue for creating unforgettable memories with family and friends.



- 1** Open foyer with storage to give your guests a great first impression
- 2** Closed off family entrance and pantry to store your ingredients and kitchen tools away from the main entertaining space
- 3** Tucked away guest bath for added privacy
- 4** Spacious living room to enjoy great company and conversations
- 5** Dedicated dining space for showcasing your favourite recipes
- 6** Kitchen with large countertop space to make cooking and serving your guests effortless
- 7** A secluded den, tucked away for privacy, but conveniently close to living spaces



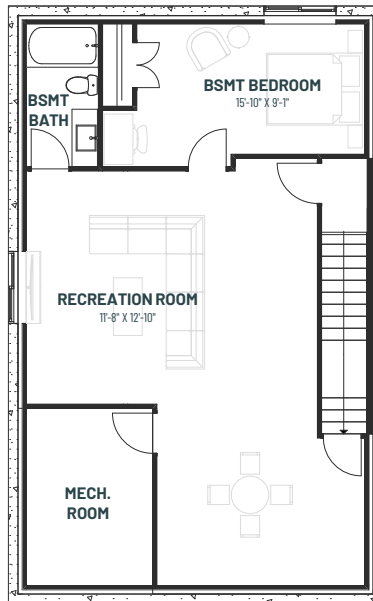
ENTERTAIN IMPRESSION 26

3 BEDROOMS | 2.5 BATHS | 2,429 SQ. FT. | 26' POCKET

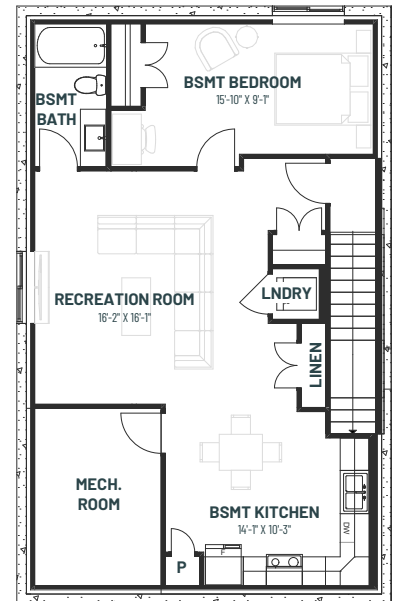
SECOND FLOOR
1,350 SQ.FT.



BASEMENT DEVELOPMENT OPTION
870 SQ.FT.



SECONDARY SUITE OPTION
870 SQ.FT.



8 Large central bonus room lets you bring the fun upstairs

9 Relaxing primary suite with extra space to wind down after a night of hosting

10 Luxurious ensuite with free standing soaker tub and fully tiled shower to treat yourself after treating others