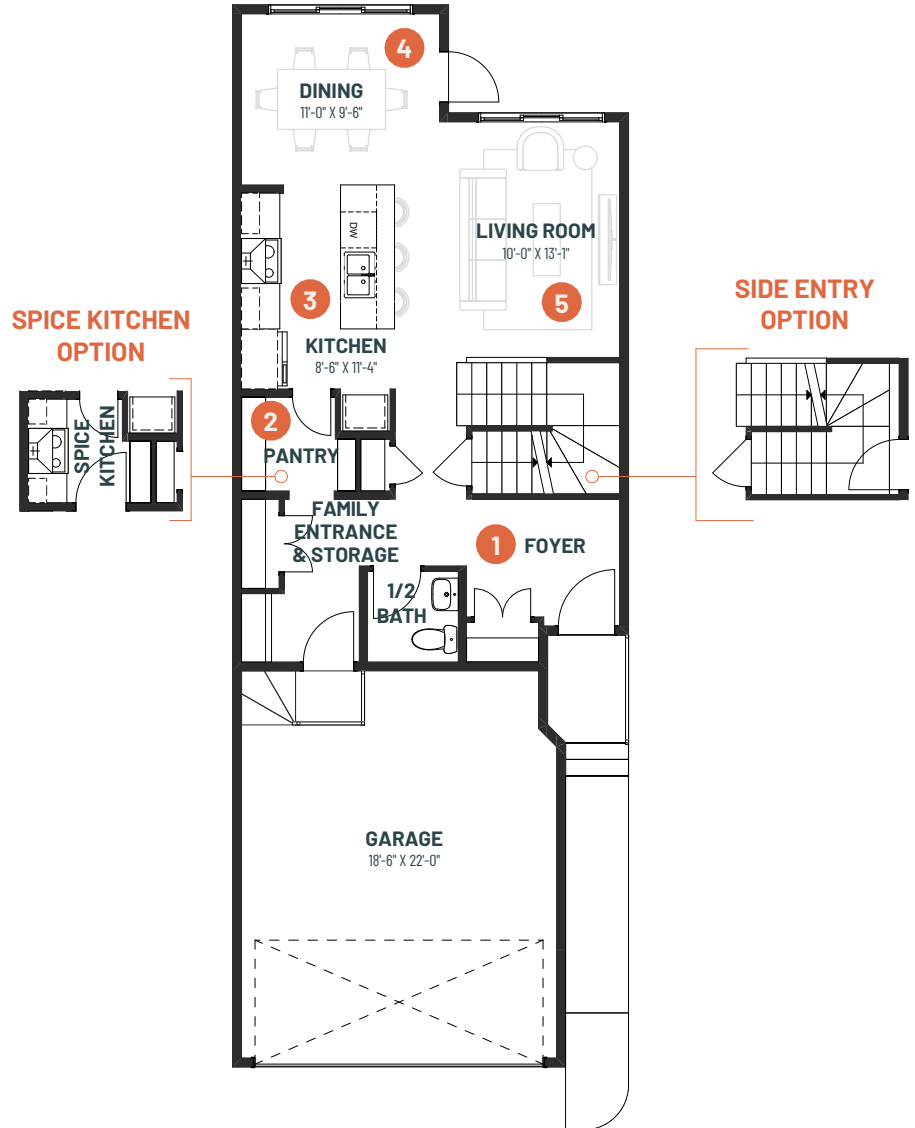


FAMILYTHRIVE 22

3 BEDROOMS | 2.5 BATHS | 1,728 SQ. FT. | 22' POCKET

The **Family Thrive 22** is a haven designed for the modern family's journey. Ideal for those who cherish growth and harmony, Family Thrive provides abundant space for teenagers to blossom alongside parents seeking comfort and practicality. The main floor living space offers a cohesive open-concept kitchen, living and dining room layout. The kitchen with adjoining walk-through pantry provides storage and space for prepping meals together and even teaching teens cooking essentials. Upstairs you'll find expansive secondary bedrooms with walk-in closets and a well-appointed second-floor laundry room, catering perfectly to the needs of active families. A sizable family room is the perfect space for teens to call their own, or for movie nights relaxing in together with the family. Experience a home where every detail supports your family's evolution, creating cherished moments in a setting that embraces your family's lifestyle.

MAIN FLOOR
745 SQ.FT.



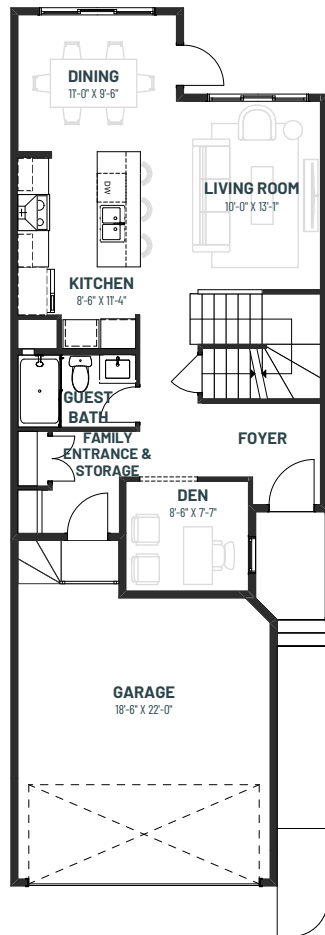
- 1 Functional family entrance with additional storage space for keeping belongings organized and getting everyone in and out of the house with ease
- 2 Convenient walk-through pantry for bringing groceries in from the garage
- 3 Large kitchen designed for preparing your favourite recipes together
- 4 Designated dining area for great family dinners
- 5 Oversized living room with space for everyone to put up their feet

FAMILYTHRIVE 22

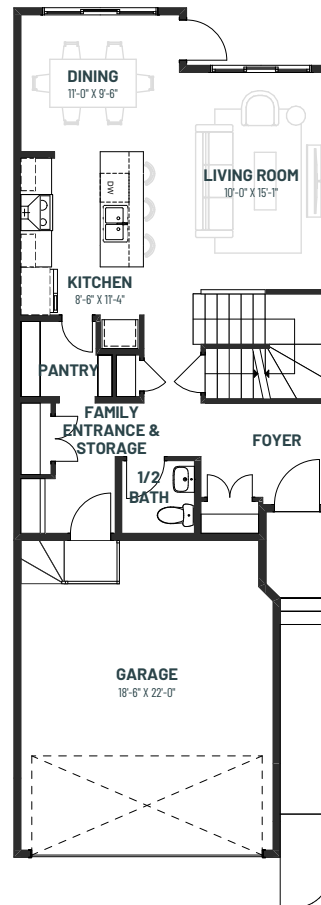
3 BEDROOMS | 2.5 BATHS | 1,728 SQ. FT. | 22' POCKET

MAIN FLOOR OPTIONS

DEN + BATH OPTION
785 SQ.FT.



EXTENDED LIVING ROOM OPTION
765 SQ.FT.

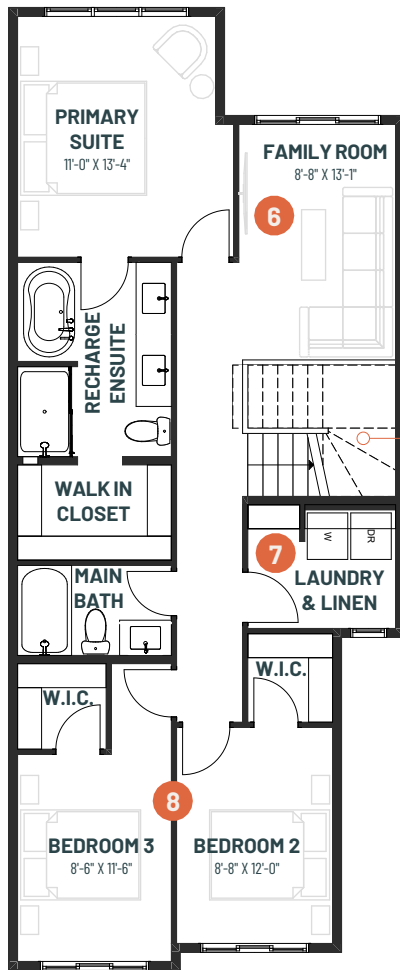




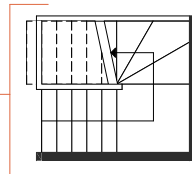
FAMILY THRIVE 22

3 BEDROOMS | 2.5 BATHS | 1,728 SQ. FT. | 22' POCKET

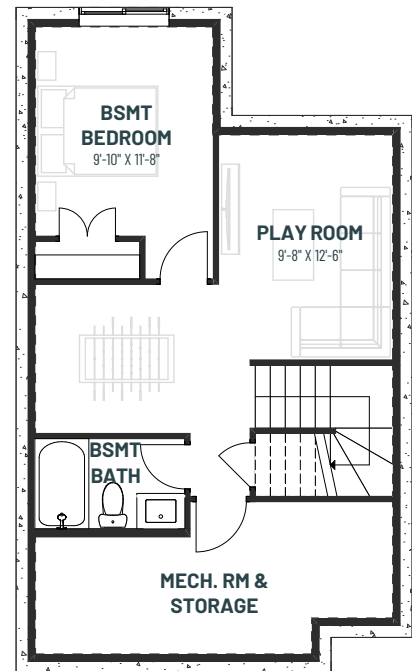
SECOND FLOOR
983 SQ.FT.



SIDE ENTRY OPTION



BASEMENT DEVELOPMENT OPTION
511 SQ.FT.



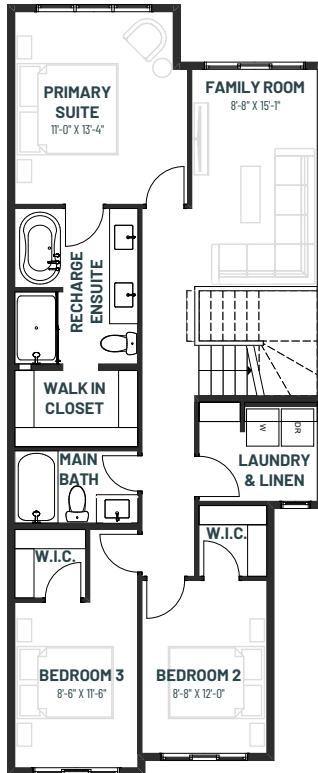
- 6** Spacious family room to provide teens with their own space or for everyone to share in quality time together
- 7** Purposeful laundry room with extra storage space for when you need it
- 8** Large secondary bedrooms with walk-in closets for every member of the family

FAMILYTHRIVE 22

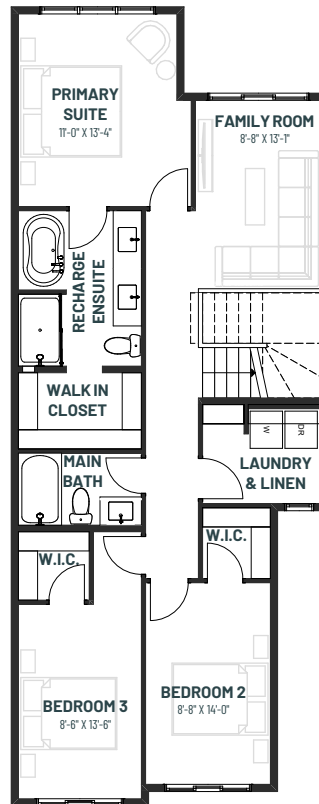
3 BEDROOMS | 2.5 BATHS | 1,728 SQ. FT. | 22' POCKET

SECOND FLOOR OPTIONS

EXTENDED FAMILY ROOM OPTION
1,003 SQ.FT.



EXTENDED BEDROOMS OPTION
1,020 SQ.FT.



OTB + FAMILY ROOM OPTION
923 SQ.FT.

