



ERIN RIDGE NORTH

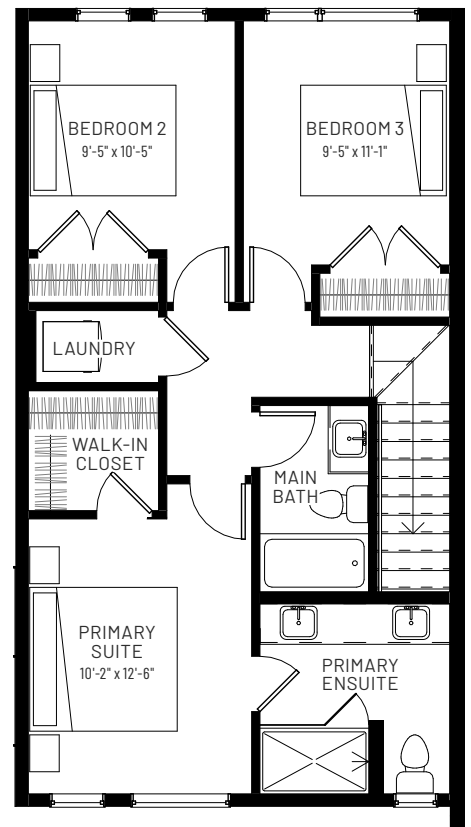
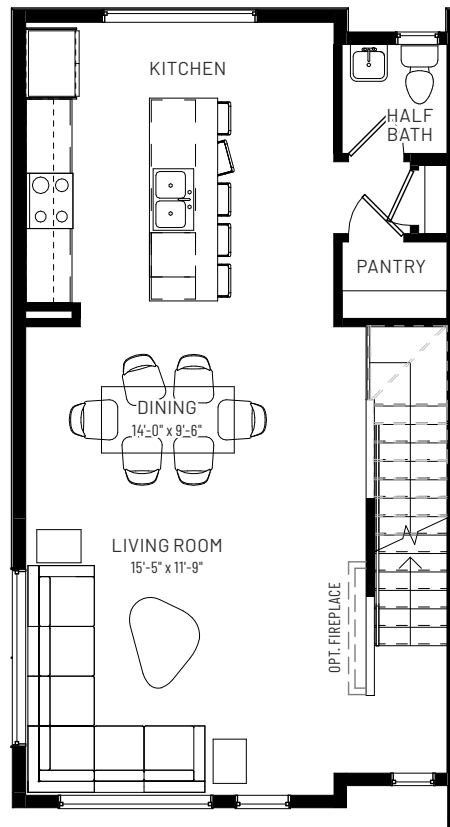
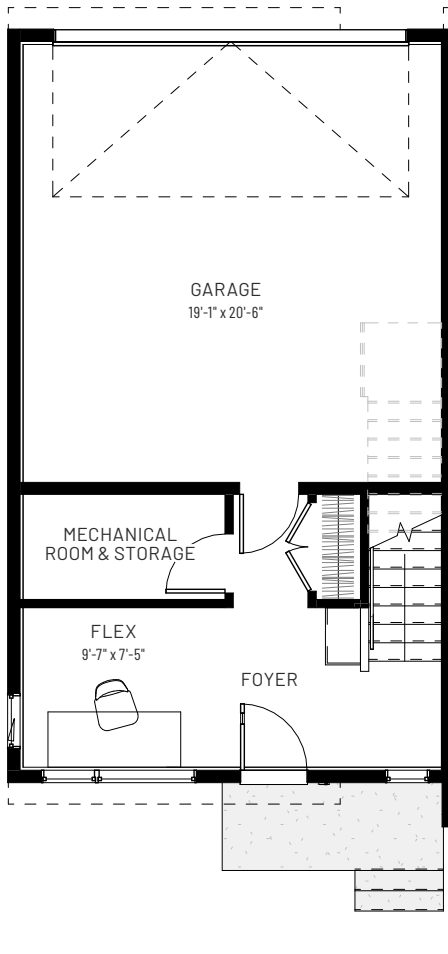
# METRO REFINED 20

3 BEDROOMS | 2.5 BATHS | 1,598 SQ.FT. | TOWNHOME

**GROUND FLOOR**  
216 SQ.FT.

**MAIN FLOOR**  
711 SQ.FT.

**UPPER FLOOR**  
671 SQ.FT.



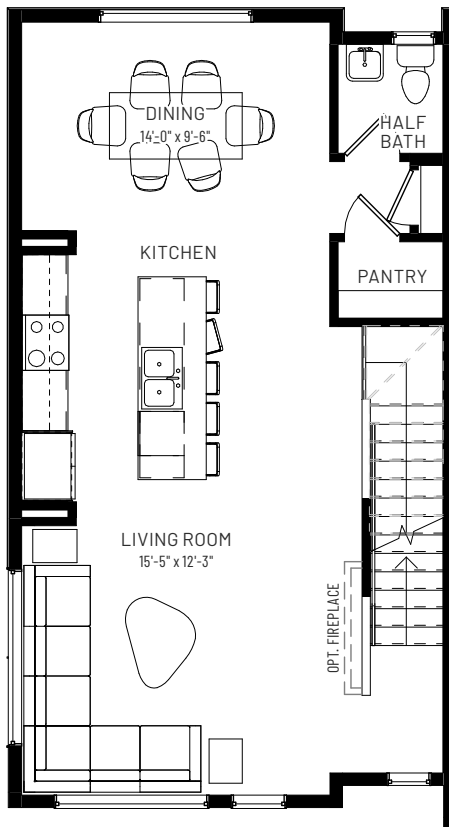


ERIN RIDGE NORTH

# METRO REFINED 20

3 BEDROOMS | 2.5 BATHS | 1,598 SQ.FT. | TOWNHOME

**MAIN FLOOR OPTION**  
711 SQ.FT.



**UPPER FLOOR TWO BEDROOM OPTION**  
671 SQ.FT.

