

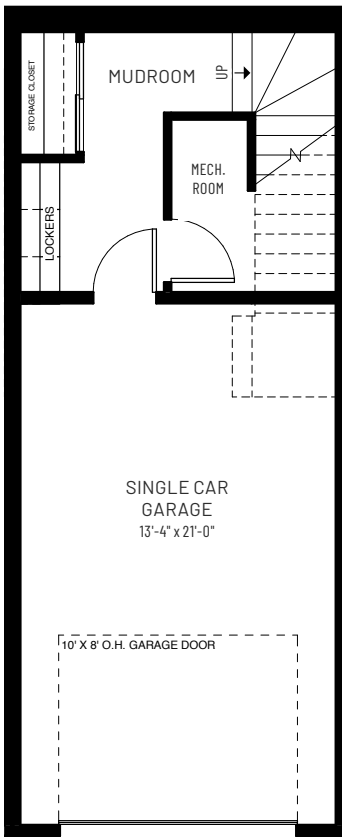


ARBOUR LAKE WEST

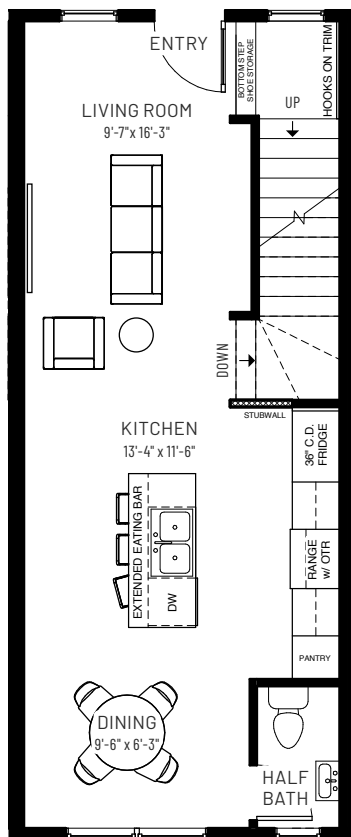
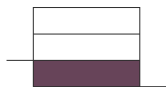
METRO FIT 14

TIERED ENTRY

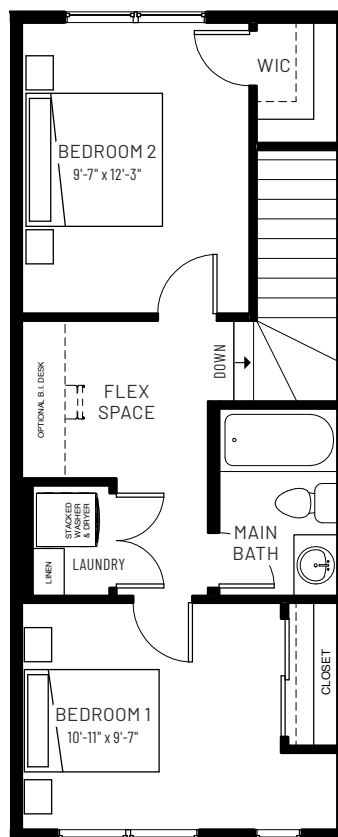
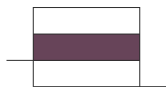
2 BEDROOMS | 1.5 BATHS | 1,072 SQ.FT.



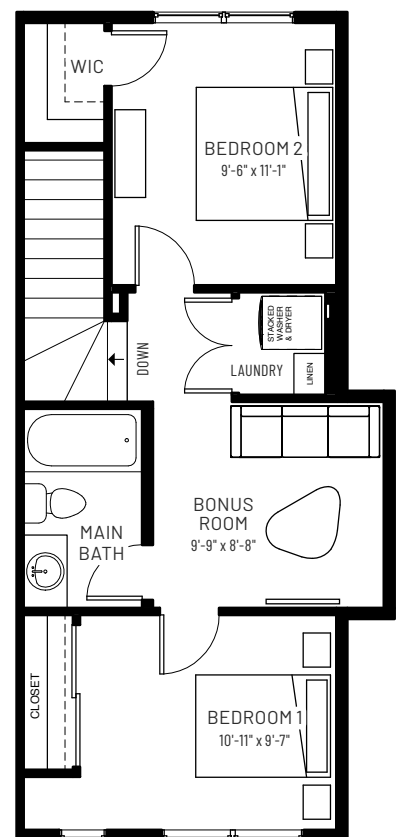
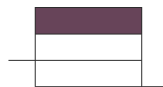
GROUND FLOOR
135 SQ.FT.



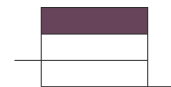
MAIN FLOOR
490 SQ.FT.



UPPER FLOOR
447 SQ.FT.



UPPER FLOOR (END UNIT)
466 SQ.FT.



Available in Buildings 3, 4, 5, 14, 15 and 16

cantiro.ca/arbours-lake-west

Rendering artists Interpretation ONLY & may not be exactly as shown. Floor plans, specifications and dimensions shown are approximate and subject to change without notice. Updated April 2024.

