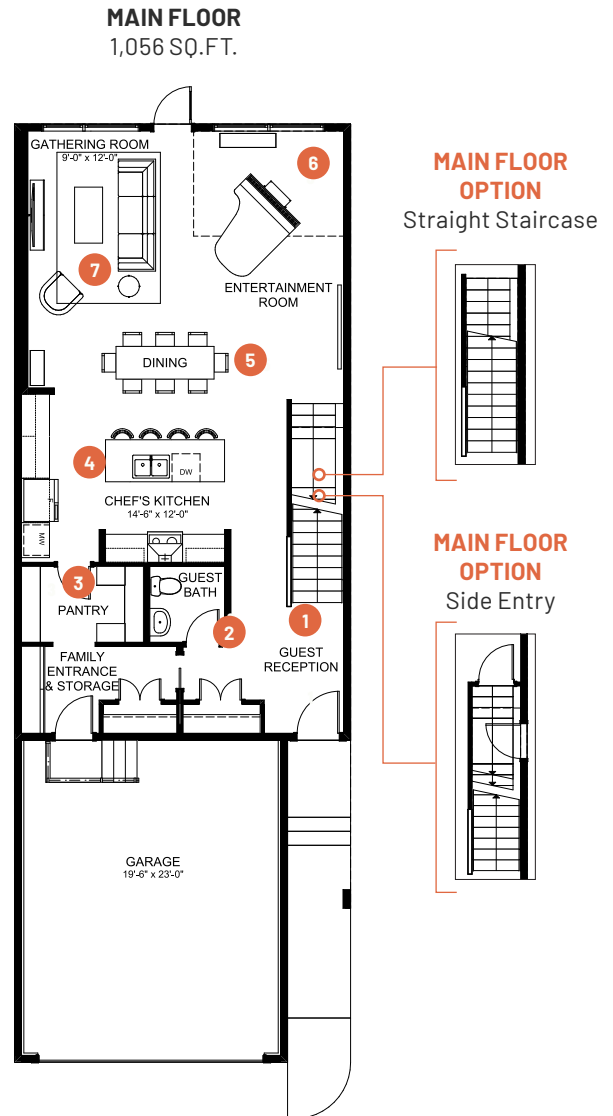


# ENTERTAIN PLAY 24

3 BEDROOMS | 2.5 BATHS | 2,256 SQ.FT. | 24' POCKET

**You are the host that's all about fun - whether it's gathering around the piano, shooting a round of pool, karaoke nights with the girls, or hosting a watch party.**

You can easily switch between formal and informal dining depending on the mood, and you love to be a part of the party. The home features an impressive open to below design above the piano area, allowing music to flow through the home. **Entertain Play** is planned to ensure the kitchen is integrated with the entertaining space, while a dedicated "play" or entertainment area large enough to comfortably fit a grand piano means you can keep the party going until the early hours of the morning. Upstairs you will find a large recreation room, a relaxing primary suite, and two full sized bedrooms for the kids or overnight guests.



**1** Large guest reception with ample storage to give your guests a warm welcome

**2** Tucked away guest bath for added privacy

**3** Oversized walkthrough pantry to make storing all your ingredients and kitchen tools easy and accessible

**4** Centrally located kitchen to integrate with the rest of the party

**5** Spacious dining area that easily fits 8 to host amazing dinner parties

**6** Dedicated entertainment room to host your favourite activity

**7** Impressive gathering rooms with ample space for visiting among guests



# ENTERTAIN PLAY 24

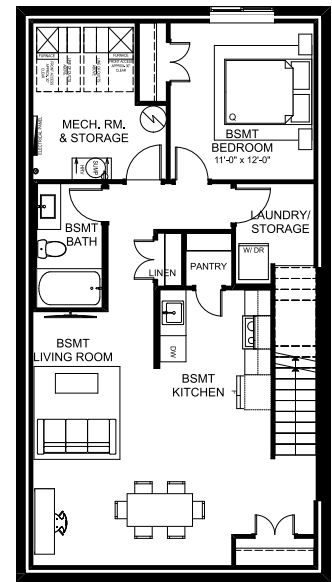
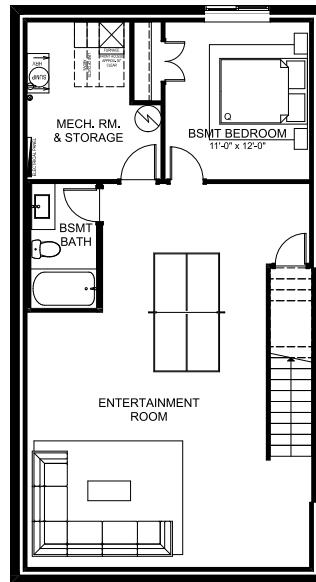
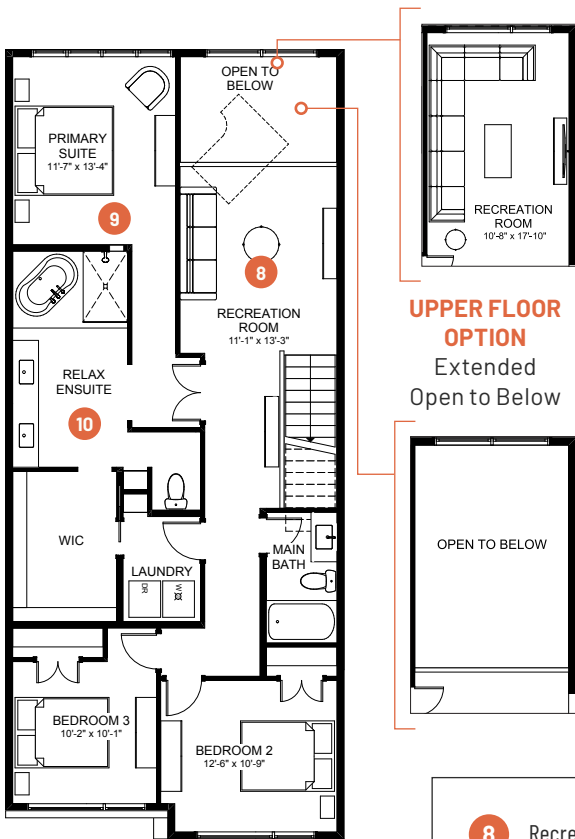
3 BEDROOMS | 2.5 BATHS | 2,256 SQ.FT. | 24' POCKET

**UPPER FLOOR**  
1,200 SQ.FT.

**UPPER FLOOR OPTION**  
Recreation Room

**BASEMENT DEVELOPMENT OPTION**  
848 SQ.FT.

**SECONDARY SUITE OPTION**  
Basement Development  
848 SQ.FT.



- 8 Recreation room with open to below to keep the fun flowing throughout the home
- 9 Relaxing primary suite to wind down after a night of hosting
- 10 Luxurious ensuite with free standing soaker tub and fully tiled shower to treat yourself after treating others