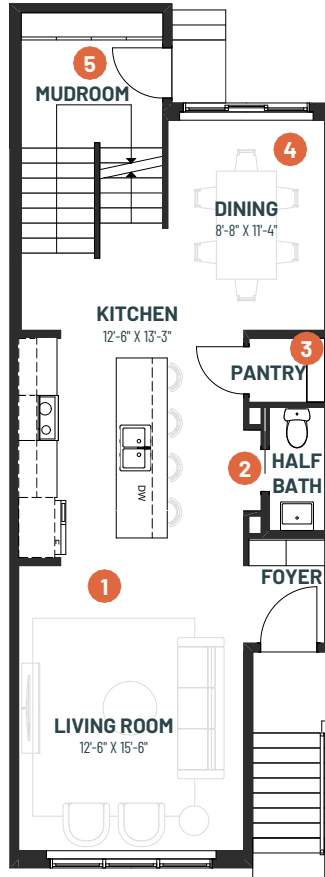


# VERSA IMPRESSION 18

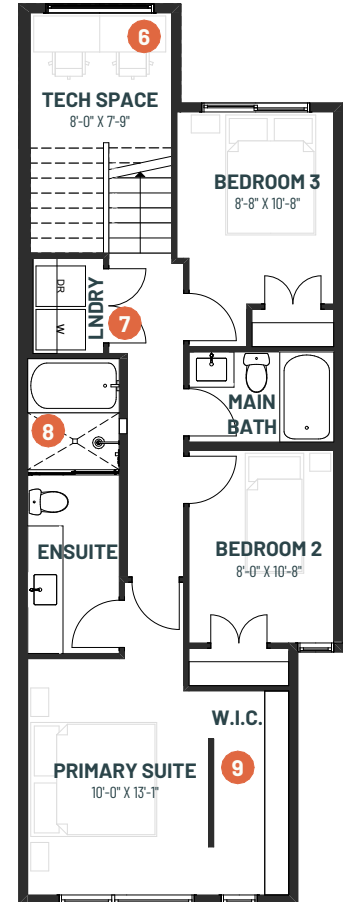
3 BEDROOMS | 2.5 BATHS | 1,471 SQ. FT. | 18' POCKET

The **Versa Impression 18** has all you need and more in a functional layout, sure to impress. The living room flows seamlessly through the galley-style kitchen. The separate dining room is the perfect space for intimate dinners. Upstairs the impressive primary suite has a walk-around closet and relaxing ensuite featuring a wet room with drop-in tub. From the main floor, with the split-level design, downstairs is a finished recreation room ideal for family nights playing games or watching movies.

**MAIN FLOOR**  
760 SQ.FT.



**UPPER FLOOR**  
711 SQ.FT.



- 1 Open-concept living room and kitchen for effortless flow
- 2 Arched feature at half bath
- 3 Convenient walk-in pantry for added storage

- 4 Large separated dining for intimate dinners
- 5 Sunken rear mudroom with added storage for all your outdoor gear
- 6 Tech space on the split-level for when you need to focus.

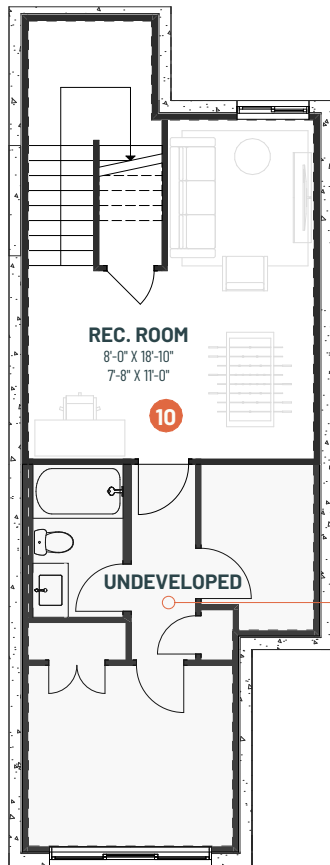
- 7 Side-by-side upstairs laundry, to make washing and drying a breeze
- 8 Ensuite features a wet room with tub and tile surround
- 9 Walk around closet with space for your entire wardrobe



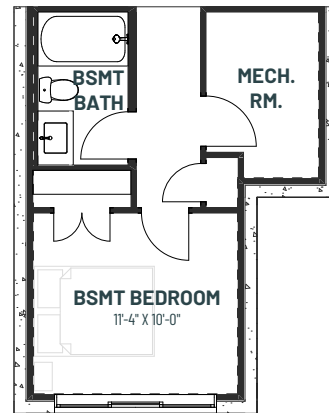
# VERSA IMPRESSION 18

3 BEDROOMS | 2.5 BATHS | 1,471 SQ. FT. | 18' POCKET

**RECREATION ROOM**  
368 SQ.FT.



**BASEMENT  
DEVELOPMENT OPTION**  
614 SQ.FT.



**10** Developed recreation room for family fun