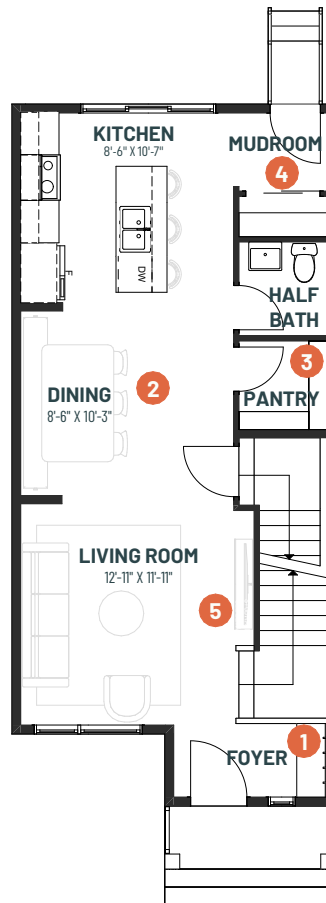


VERSA ASPIRE 18

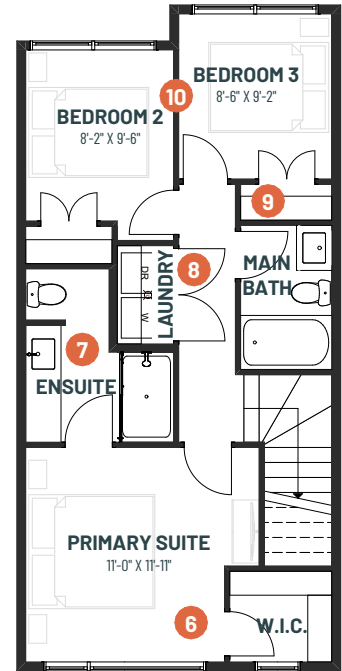
3 BEDROOMS | 2.5 BATHS | 1,273 SQ. FT. | 18' POCKET

The **Versa Aspire 18** is designed for those ready to fulfill their dream of owning a single family home. The main floor's open concept layout provides seamless flow from each the front and rear entries through the living, dining and kitchen. Upstairs is a spacious primary suite with walk-in closet and large ensuite. Convenient side-by-side laundry and two additional bedrooms are ideal for family members or added living space for your home office, workout space and more.

MAIN FLOOR
668 SQ.FT.



UPPER FLOOR
605 SQ.FT.



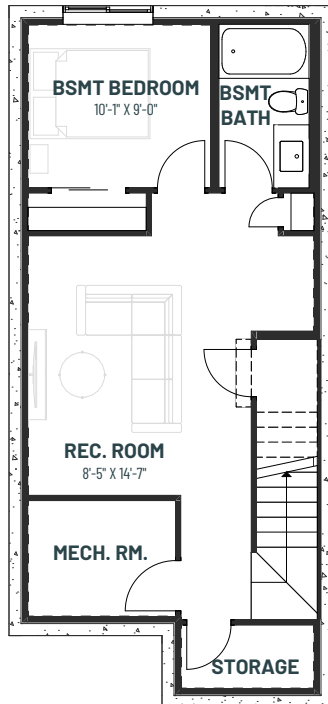
- 1** Spacious front entry with bench and plenty of storage
- 2** Open concept kitchen, living and dining for seamless flow
- 3** Large walk-in pantry for room for all of your kitchen accessories and dry goods
- 4** Mudroom with separate closet for added storage
- 5** Built-in media niche to house your TV for movie nights in
- 6** Oversized primary suite with walk-in-closet featuring natural light
- 7** Spacious ensuite for relaxing after a long day
- 8** Side-by-side upstairs laundry to make laundry days a breeze
- 9** Large closets for your whole wardrobe
- 10** Two additional bedrooms for your kids, guest room, home office, you name it!



VERSA ASPIRE 18

3 BEDROOMS | 2.5 BATHS | 1,273 SQ. FT. | 18' POCKET

**BASEMENT
DEVELOPMENT OPTION**
503 SQ.FT.



**SECONDARY
SUITE OPTION**
503 SQ.FT.

