



WESTMIN 795

3 BED + FLEX

2.5 BATH

INTERIOR 1,475 SQ. FT.

OUTDOOR LOUNGE 118 SQ. FT.

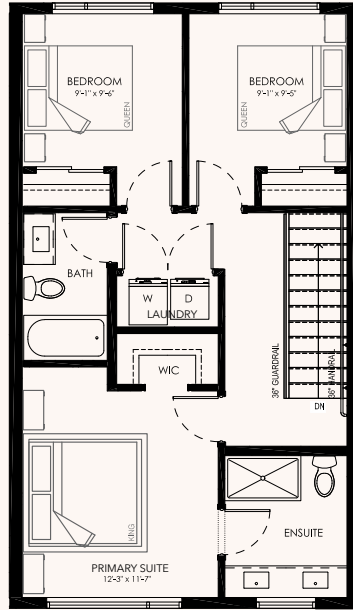
WESTMIN795.CA

250-274-3552

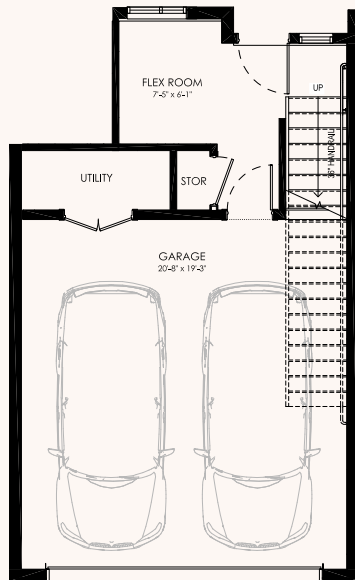
info@westmin795.ca

795 Westminster Avenue West,
Penticton, BC

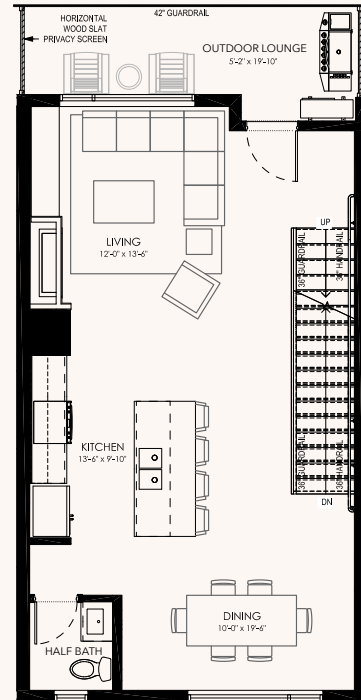
SHOREWAY (#125)



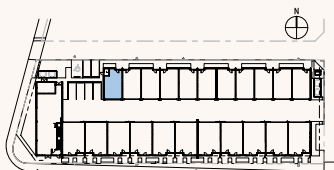
UPPER FLOOR



GROUND FLOOR



MAIN FLOOR



CANTIRO



Dimensions, sizes, specifications, layouts and materials are approximate only and subject to change without notice. E.&O.E. The flex room on the main level of this unit features a reduced square footage to accommodate a mechanical room as part of the building's safety features.