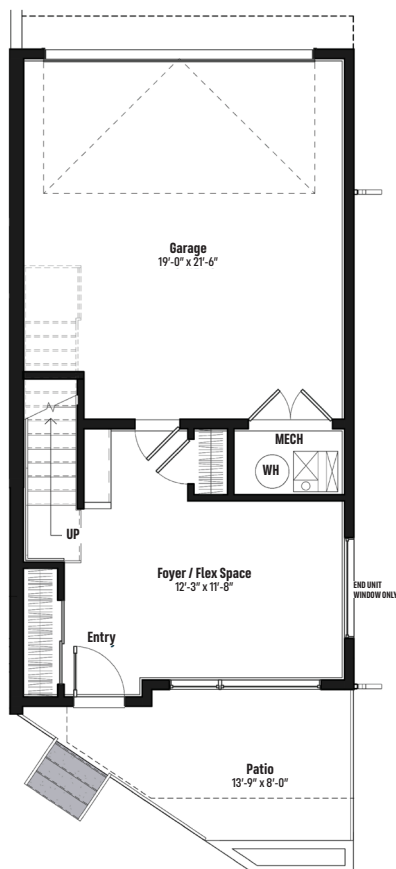


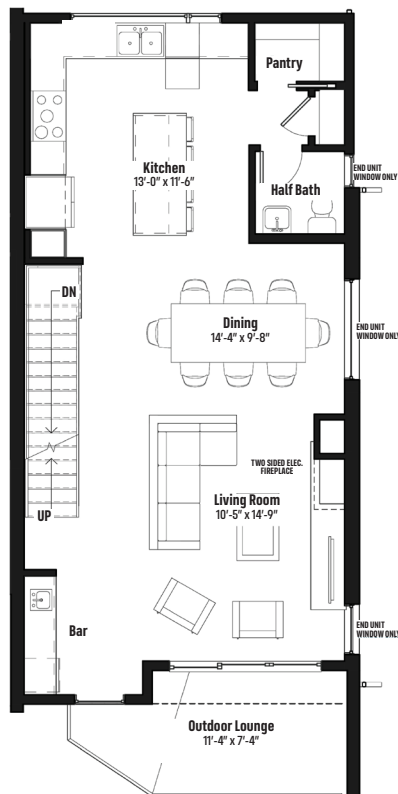


# SOUTH BUILDING – #1-5

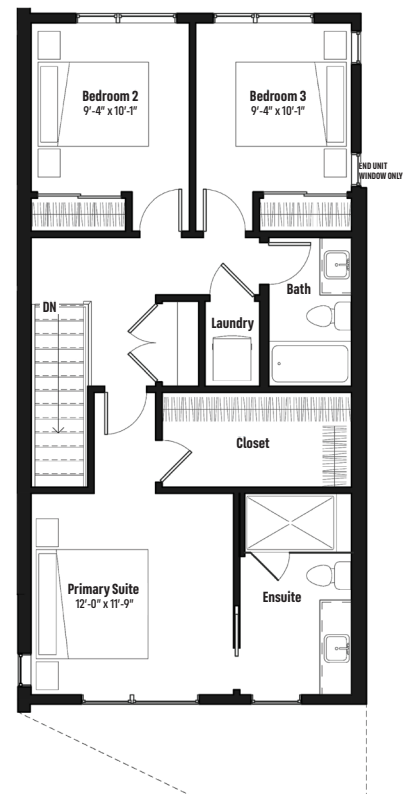
Ground Floor - 332 sq. ft.



Main Floor - 801 sq. ft.



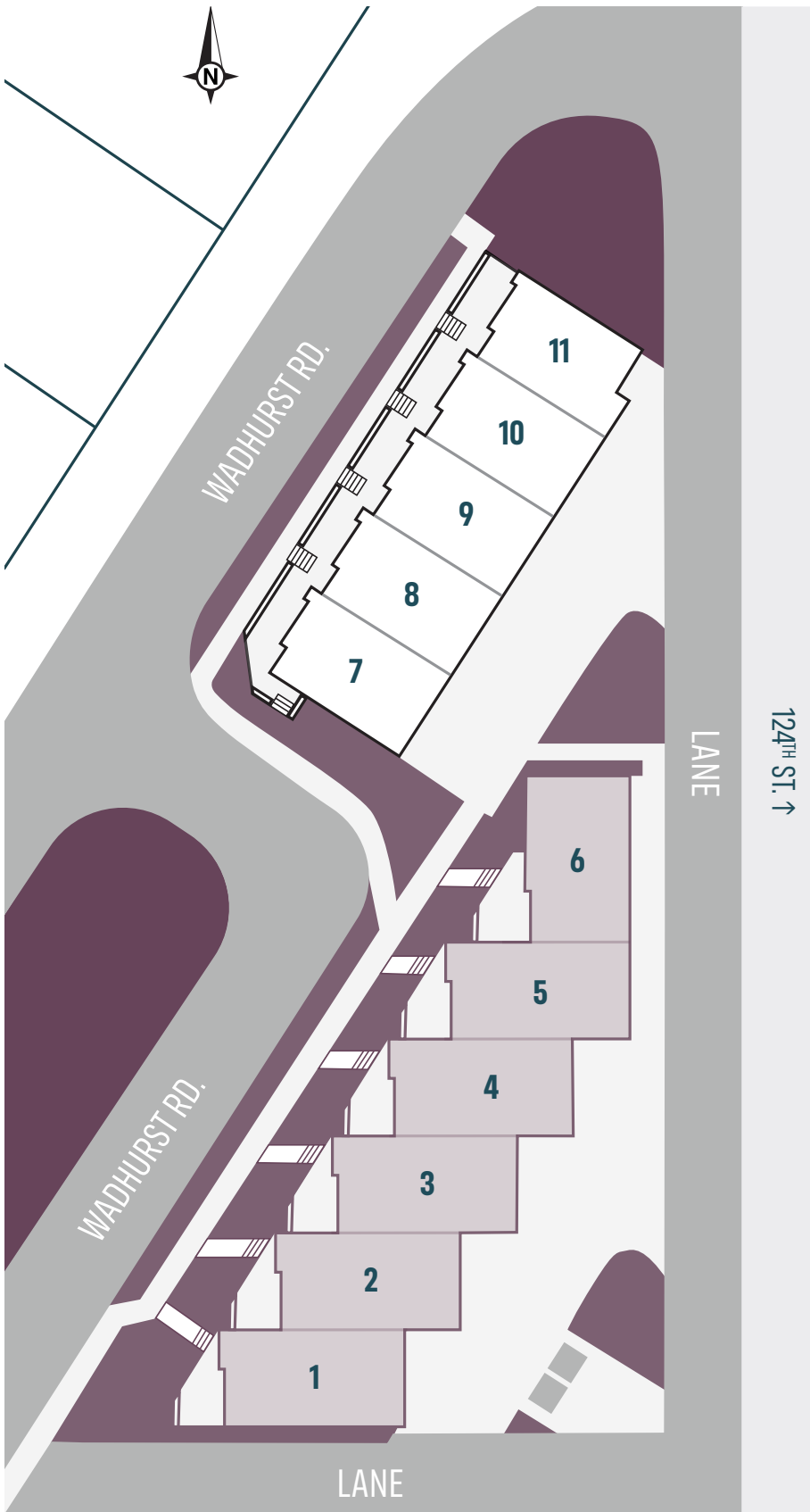
Upper Floor - 786 sq. ft.



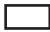
**ASCENSION BLOCK**  
by CANTIRO

3 BEDROOMS | 2.5 BATHS | INTERIOR 1,927 SQ. FT.  
OUTDOOR LOUNGE 106 SQ.FT. | PATIO 126 SQ. FT.

# ASCENSION BLOCK LOT MAP



## LEGEND

 North Building

 South Building

### Exclusive Location Near Downtown

Ascension Block is a unique enclave nestled between 124th Street and Glenora – steps from boutique shops and cafes and minutes to downtown. An impressively walkable area invites you to spend more time doing the things you love and less time getting there.

### Proximity to Nature

Easy connections to the river valley and a neighbouring ravine give you nature and recreation on your doorstep. Immerse yourself in tranquil greenspace, just moments from your home.

### Elevated Architecture

Eleven premier townhomes feature contemporary architecture inside and out. Each home comes with high-end curb appeal and impressive interior aesthetics.

Experience elevated living in an exclusive infill location. Learn more at [AscensionBlock.ca](https://AscensionBlock.ca)



**ASCENSION  
BLOCK** by CANTIRO