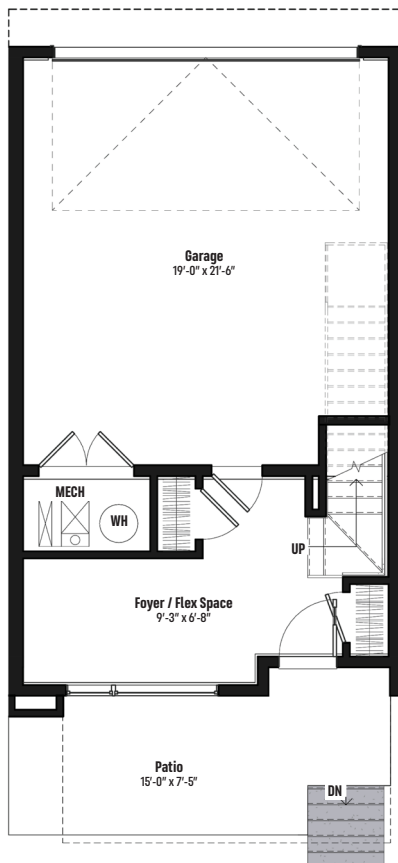
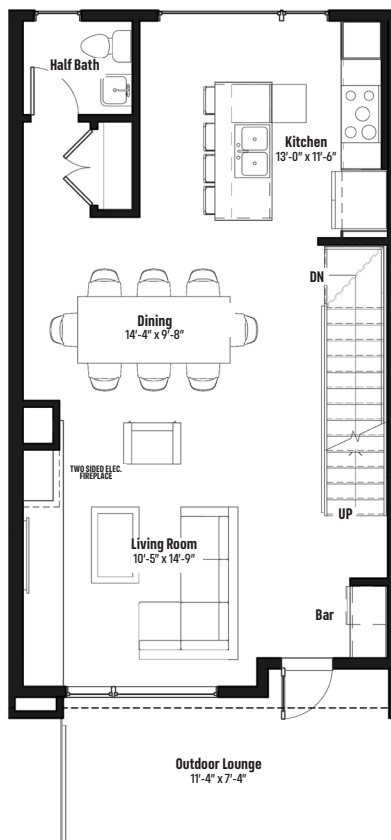


NORTH BUILDING – #8-10

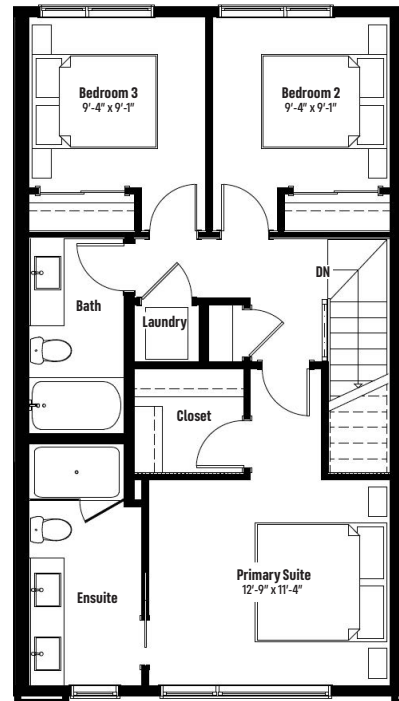
Ground Floor - 233 sq. ft.



Main Floor - 713 sq. ft.



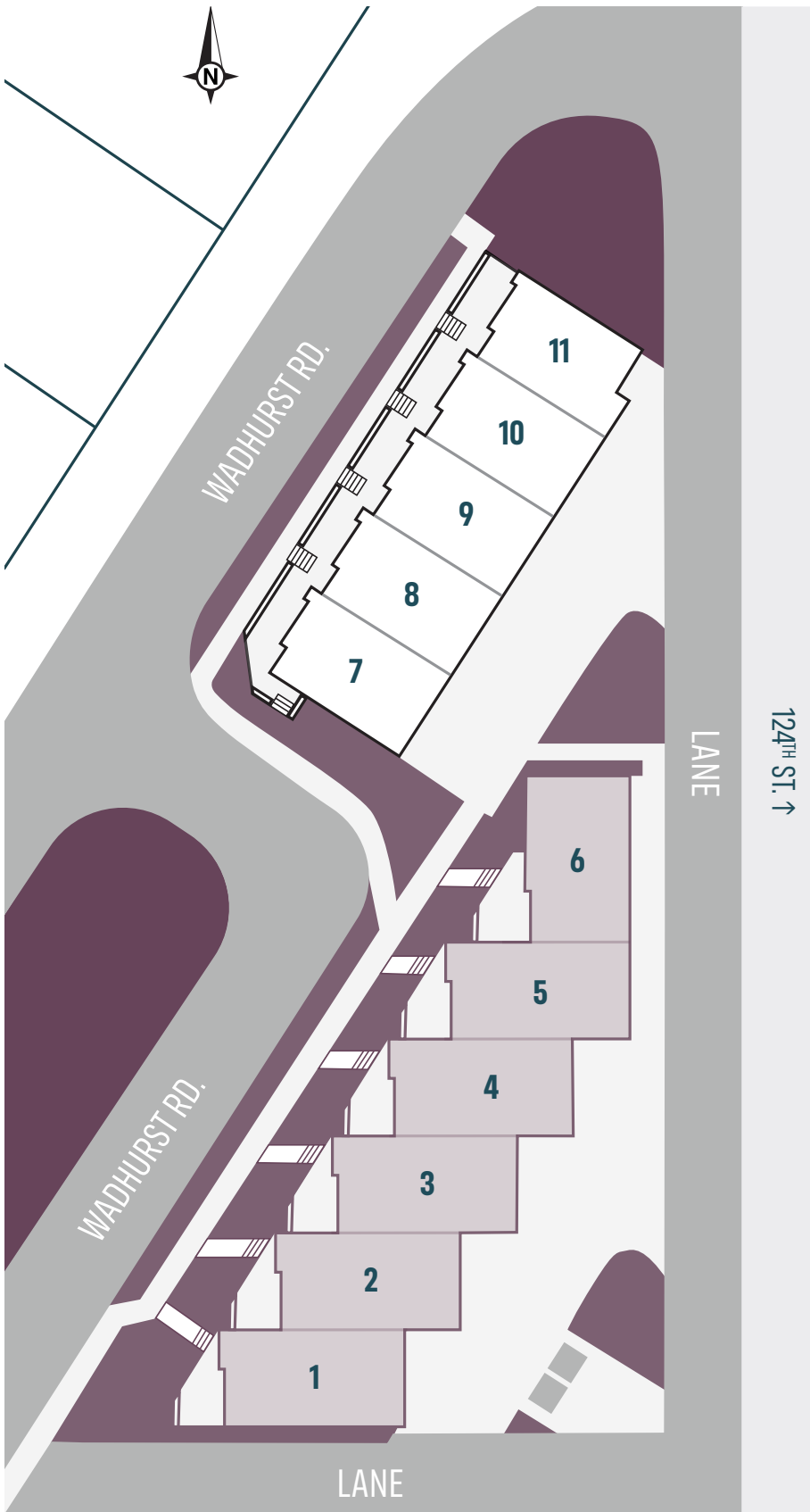
Upper Floor - 686 sq. ft.



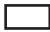
ASCENSION BLOCK
by CANTIRO

3 BEDROOMS | 2.5 BATHS | INTERIOR 1,632 SQ. FT.
OUTDOOR LOUNGE 145 SQ. FT. | PATIO 140 SQ. FT.

ASCENSION BLOCK LOT MAP



LEGEND

 North Building

 South Building

Exclusive Location Near Downtown

Ascension Block is a unique enclave nestled between 124th Street and Glenora – steps from boutique shops and cafes and minutes to downtown. An impressively walkable area invites you to spend more time doing the things you love and less time getting there.

Proximity to Nature

Easy connections to the river valley and a neighbouring ravine give you nature and recreation on your doorstep. Immerse yourself in tranquil greenspace, just moments from your home.

Elevated Architecture

Eleven premier townhomes feature contemporary architecture inside and out. Each home comes with high-end curb appeal and impressive interior aesthetics.

Experience elevated living in an exclusive infill location. Learn more at AscensionBlock.ca



**ASCENSION
BLOCK** by CANTIRO