

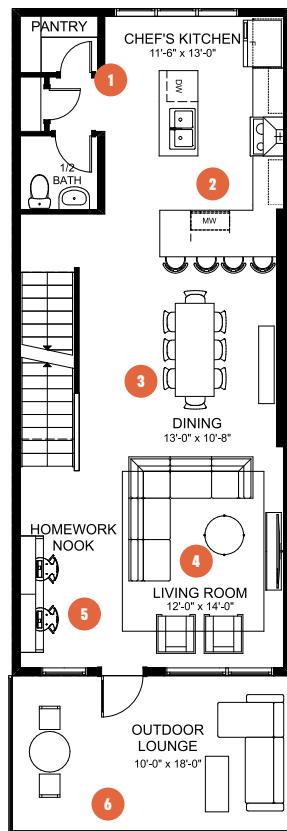
FAMILY PARK VIEW 18

3 BEDROOMS | 2.5 BATHS | 1,981 SQ. FT. | 18' POCKET

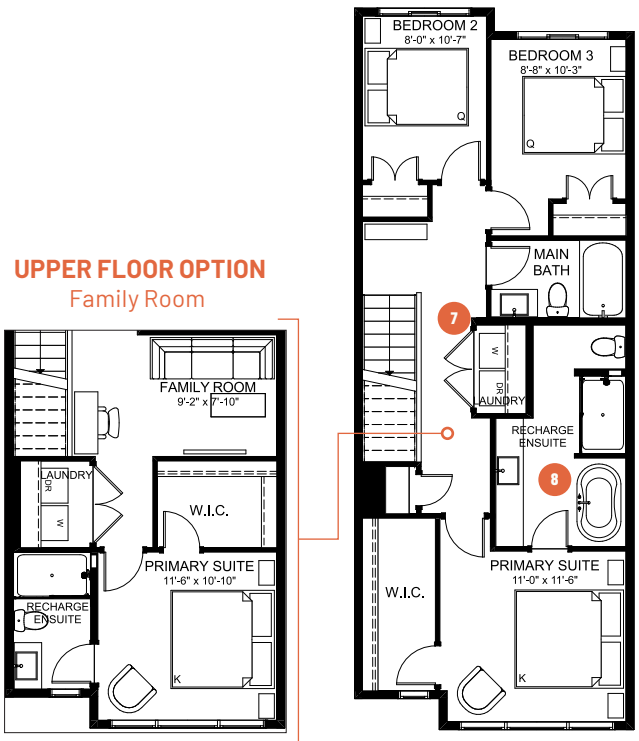
The **Family Park View** home is designed to simplify busy family life to allow for more memorable moments shared together.

Beginning on the ground floor, the wider garage and functional mudroom allows for ease of movement while unloading kids and groceries. You'll also find a spacious play room that was built for movie nights and game time with the family. The main floor is an expansive open concept space that includes a flex space for a homework nook, and two large eating bars for quick meal preps and great conversations. The upper floor includes a luxurious primary suite complete with oversized walk-in closet, tiled shower, and free-standing soaker tub to recharge your batteries after a busy day.

MAIN FLOOR
774 SQ. FT.



UPPER FLOOR
775 SQ. FT.



- 1** Large pantry and handy closets for keeping your groceries and small appliances organized
- 2** Gourmet kitchen with two expansive eating bars for easy meal prep or grab-and-go meals
- 3** Designated dining area that comfortably seats 8 for great family dinners
- 4** Oversized living room with space for everyone to put up their feet
- 5** Dedicated homework nook for space for the kids to focus
- 6** Expansive outdoor lounge to enjoy the warm summer evenings
- 7** Convenient upper floor laundry space to make laundry a breeze
- 8** Luxurious primary suite to recharge your batteries after a busy day

Updated December 2022

Rendering artists Interpretation ONLY & may not be exactly as shown. Floor plans, specifications and dimensions shown are approximate and subject to change without notice.

CANTIRO
HOMES

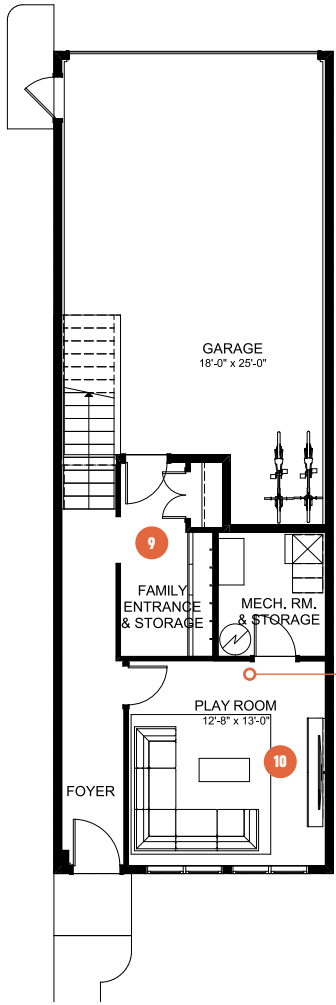


FAMILY PARK VIEW 18

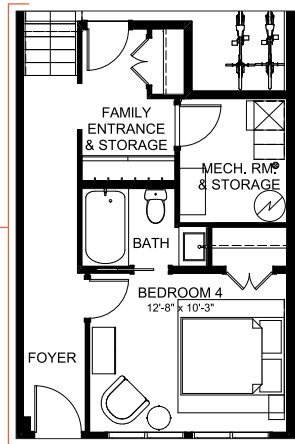
3 BEDROOMS | 2.5 BATHS | 1,981 SQ. FT. | 18' POCKET

- Three finished floors of functional living space
- Floor-to-ceiling windows on every level for natural light and amazing views
- Expansive second level outdoor lounge
- 30 acres of parkland right outside your front door
- Attached garage
- Landscaping included
- No condo fees

GROUND FLOOR 432 SQ. FT.



GROUND FLOOR OPTION Bed & Bath



9 Functional family entrance for getting everyone in and out of the house with ease

10 Spacious play room designed for movie nights and game time with the family