

# FAMILY FLOW 24

3 BEDROOMS | 2.5 BATHS | 2,328-2,420 SQ. FT. | 24' POCKET

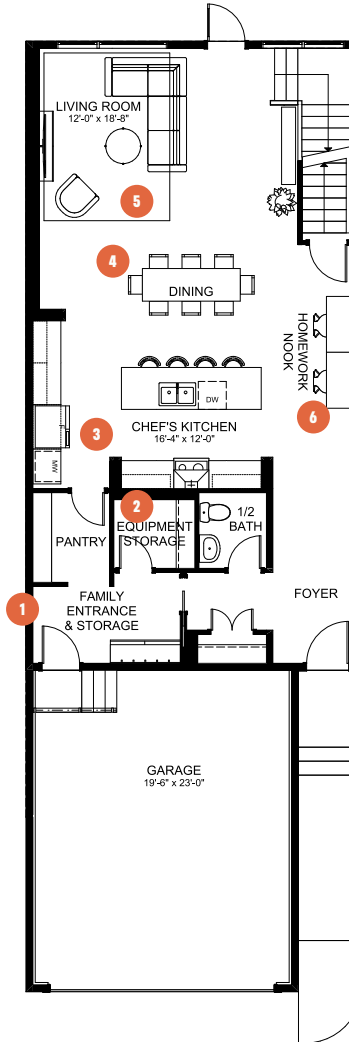
## Your family life is busy, but you're on top of it all.

Whether it's work, school, hockey practice or swimming lessons, you know exactly what everyone is doing and where everything is.

**Family Flow** is designed to help you do it by prioritizing ease of movement and creating space for everything. A highly functional family entrance and storage room coming from the garage is complete with a walkthrough pantry, storage bench, wall hooks and an additional storage room for sports equipment or household appliances. The kitchen is meticulously designed for effortless flow from meal prep to dinner time. Upstairs features a spacious family room, two large secondary bedrooms for the kids, and a primary suite where parents can rest and reconnect.

## MAIN FLOOR

1,080 SQ. FT.



**1** Functional family entrance for getting everyone in and out of the house with ease

**2** Handy storage space for keeping your home – and everyone's belongings – organized

**3** Large kitchen with effortless flow for easy meal prep or grab-and-go meals

**4** Designated dining area for great family dinners

**5** Oversized living room with space for everyone to put up their feet

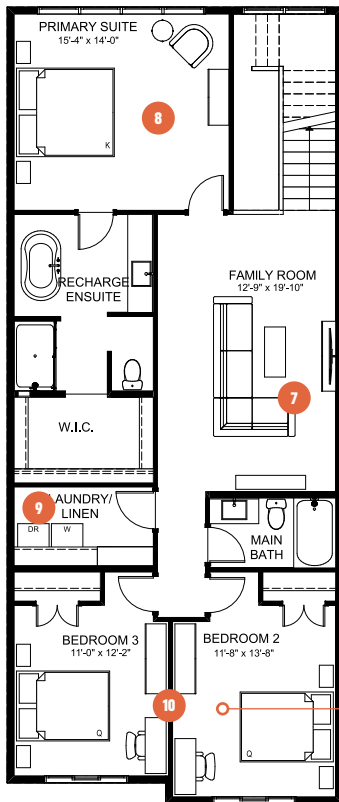
**6** Dedicated homework nook for space for the kids to focus



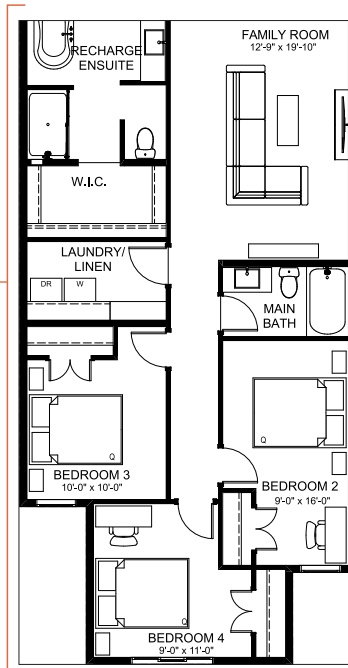
# FAMILY FLOW 24

3 BEDROOMS | 2.5 BATHS | 2,328-2,420 SQ. FT.  
24' POCKET

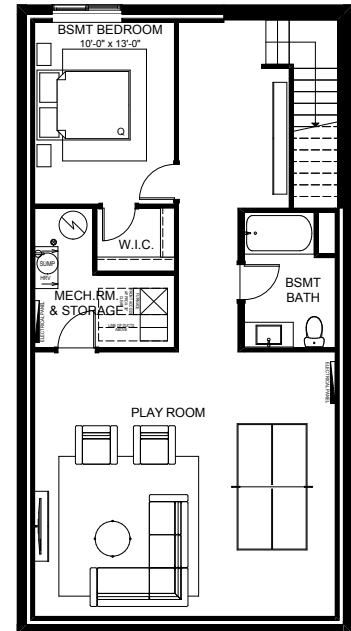
## SECOND FLOOR 1248 - 1340 SQ FT



## SECOND FLOOR OPTION Fourth Bedroom Adds an additional 92 SQ FT



## BASEMENT DEVELOPMENT OPTION 922 SQ. FT.



- 7** Spacious family room for sharing quality time together
- 8** Oversized primary suite to provide extra space for personal downtime
- 9** Purposeful laundry room with extra storage space for when you need it
- 10** Large secondary bedrooms for every member of the family