

# FAMILY EVOLVE 24

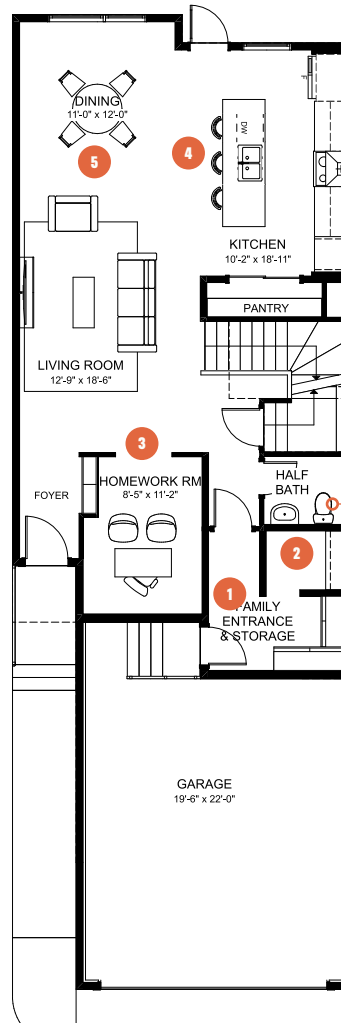
3 BEDROOMS | 2.5 BATHS | 2,243 SQ. FT. | 24' POCKET

## MAIN FLOOR

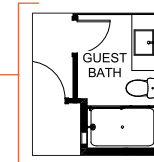
1,033 SQ. FT.

**Your family is growing and you value your time spent together.**

**Family Evolve** includes an interchangeable dining and gathering room, depending on your preference for layout. The main floor den is ideal for a homework room or can be made into an additional space for overnight guests to stay. The upper floor has two spacious rooms for the kids, or you can add an additional bedroom for your evolving family. The primary suite with walk-in-closet and luxurious ensuite is your personal sanctuary after caring for everyone in your household.



### MAIN FLOOR OPTION Guest Bath



**1** Functional family entrance for getting everyone in and out of the house with ease

**2** Convenient storage space for keeping everyone's seasonal gear organized

**3** Main floor den that's perfect as a homework room or space to host overnight guests

**4** Oversized island for casual seating to be close to the cook

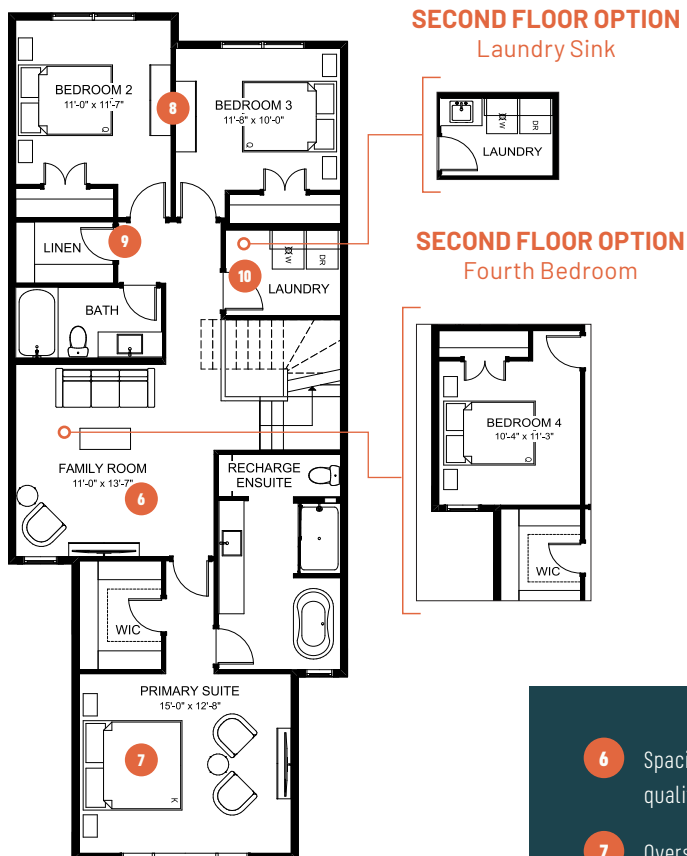
**5** The dining and living room locations can be switched to fit your needs



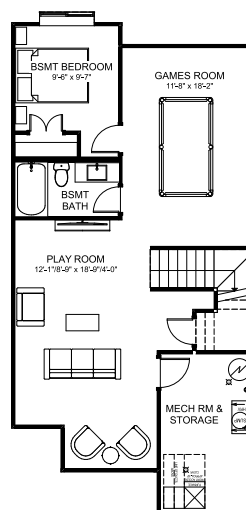
# FAMILY EVOLVE 24

3 BEDROOMS | 2.5 BATHS | 2,243 SQ. FT.  
24' POCKET

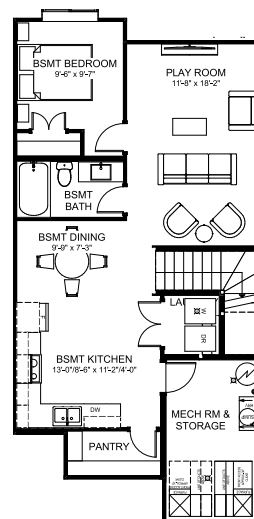
## SECOND FLOOR 1,210 SQ. FT.



## BASEMENT DEVELOPMENT OPTION 805 SQ. FT.



## SECONDARY SUITE OPTION Basement Development 805 SQ. FT.



- 6** Spacious family room for sharing quality time together
- 7** Oversized primary suite to provide extra space for personal downtime
- 8** Large secondary bedrooms for every member of your family
- 9** Purposeful linen closet for extra storage
- 10** Large laundry room with additional storage for when you need it