

# FAMILY ACHIEVE 24

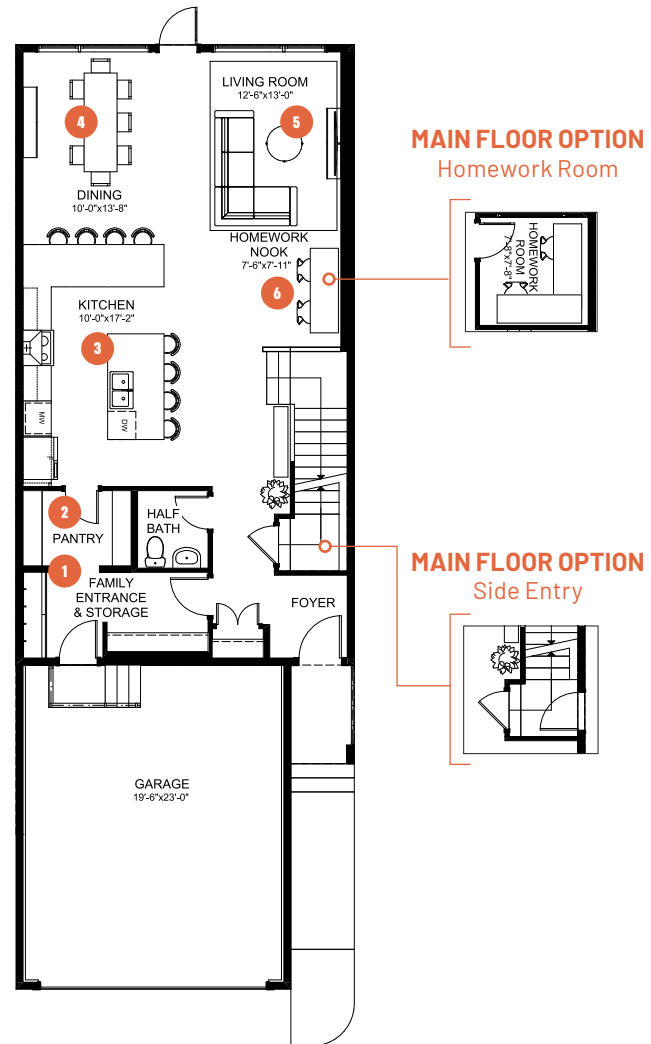
3 BEDROOMS | 2.5 BATHS | 2,285 SQ. FT. | 24' POCKET

## MAIN FLOOR

1,056 SQ. FT.

### Your family wants it all.

You value reaching your goals together and celebrating your successes. **Family Achieve** includes work and homework stations for the whole family, so each person has a space to focus on their goals. The kitchen includes two expansive eating bars to fuel your family and get them out the door. Upstairs you will find a family room for shared time together after a long day on the go, two large secondary bedrooms with space for a study area, and a primary suite where you can recharge your batteries after giving life your all.



1 Functional family entrance for getting everyone in and out of the house with ease

2 Large walkthrough pantry for keeping your groceries and small appliances organized

3 Large kitchen with two expansive eating bars for easy meal prep or grab-and-go meals

4 Designated dining area for great family dinners

5 Oversized living room with space for everyone to put up their feet

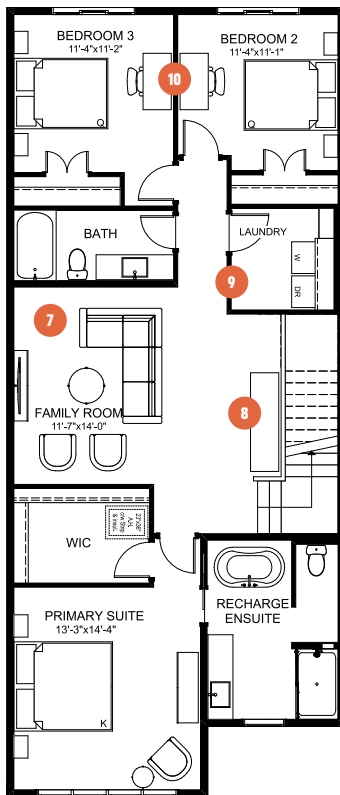
6 Dedicated homework nook for space for the kids to focus



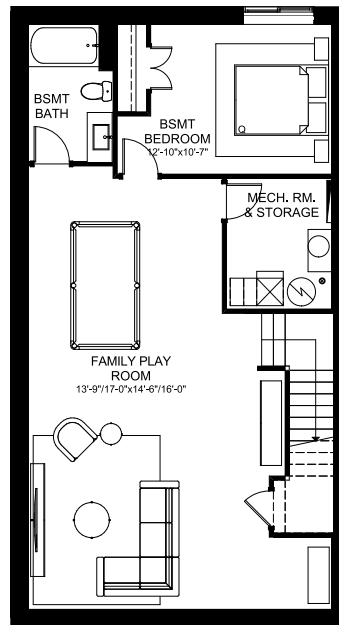
# FAMILY ACHIEVE 24

3 BEDROOMS | 2.5 BATHS | 2,285 SQ. FT. | 24' POCKET

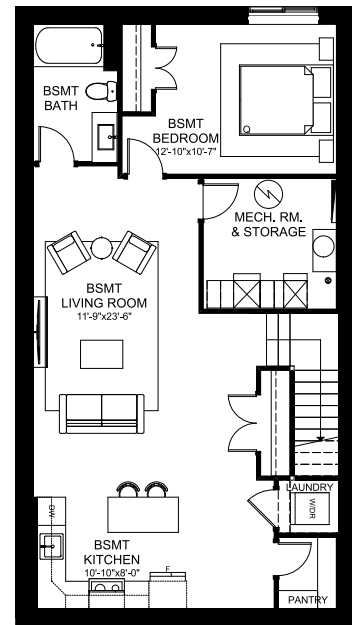
## SECOND FLOOR 1,229 SQ. FT.



## BASEMENT DEVELOPMENT OPTION 898 SQ. FT.



## SECONDARY SUITE OPTION Basement Development 879 SQ. FT.



- 7** Spacious family room for sharing quality time together
- 8** Flexible space for additional homework stations
- 9** Purposeful laundry room with extra storage space for when you need it
- 10** Large secondary bedrooms for every member of the family