

# ENTERTAIN ELEVATE 20

3 BEDROOMS | 2.5 BATHS | 1,868 SQ. FT. | 20' POCKET

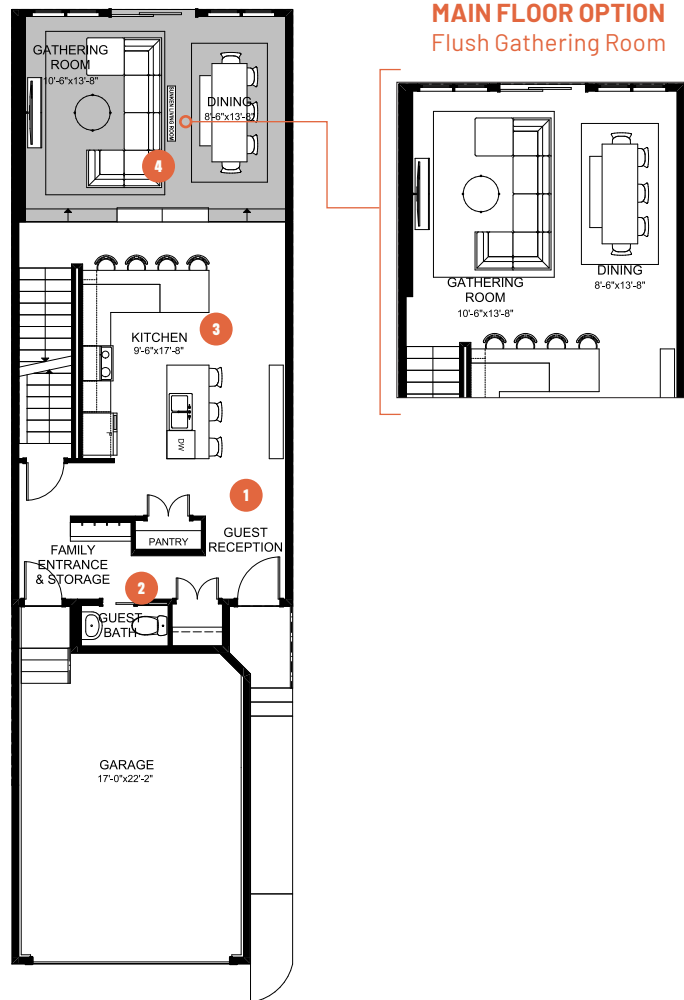
## MAIN FLOOR

888 SQ. FT.

**Good food and good times. Formal dining isn't really your style, you prefer putting out an amazing spread of the most delicious food while your guests mix and mingle.**

The party flows effortlessly from one room to the other and you're very much part of the party.

**Entertain Elevate** has the perfect combination of "wow" factor and function—an elevated kitchen space, a sunken gathering room with 11' ceilings, and two serving bars to present the perfect menu of delicious food and signature cocktails. Upstairs, a large recreation room lets you bring the fun and games to a new level. Your primary suite includes an impressive ensuite with tiled shower, and space to rest after the party is over.



**1** Open guest reception with storage to give your guests a warm welcome

**2** Tucked away guest bath for added privacy

**3** A kitchen with two expansive serving bars to make cooking and serving your guests effortless

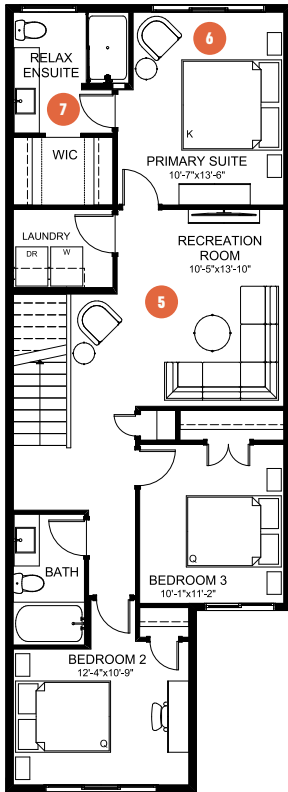
**4** A sunken gathering and dining room will be sure to "wow" your guests



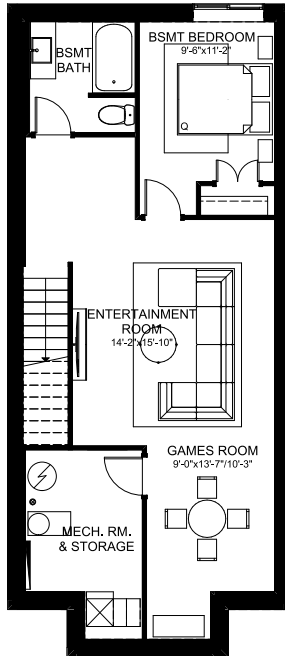
# ENTERTAIN ELEVATE 20

3 BEDROOMS | 2.5 BATHS | 1,868 SQ. FT. | 20' POCKET

## SECOND FLOOR 980 SQ. FT.



## BASEMENT DEVELOPMENT OPTION 694 SQ. FT.



- 5 Impressive recreation room for hosting all your friends and family for the big game or latest movie
- 6 Relaxing primary suite with extra space to wind down after a night of hosting
- 7 Luxurious ensuite with fully tiled shower to treat yourself after treating others