

# FAMILY CENTERED 24

3 BEDROOMS | 2.5 BATHS | 2,293-2,449 SQ. FT. | 24' POCKET

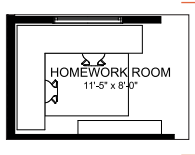
## Family time comes first.

Life is busy, but you prioritize spending time together. Your ideal way to spend your evenings and weekends includes cozy movie nights on the couch or playing your favourite board games as a family. **Family Centered** is designed to help you achieve that. The large, central living room is the heart of the home, where your most precious memories are created. The family entrance and storage room coming from the garage includes ample storage for all your family's coats and shoes. The large kitchen creates the perfect backdrop for meal prep. Upstairs includes a spacious central family room, two large secondary bedrooms for the kids, and a luxurious primary suite to recharge.

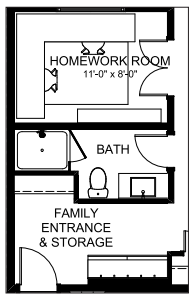
### MAIN FLOOR

1,080 SQ. FT.

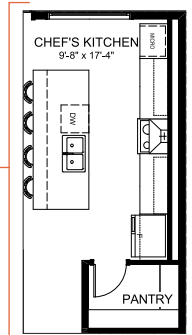
#### MAIN FLOOR OPTION Homework Room



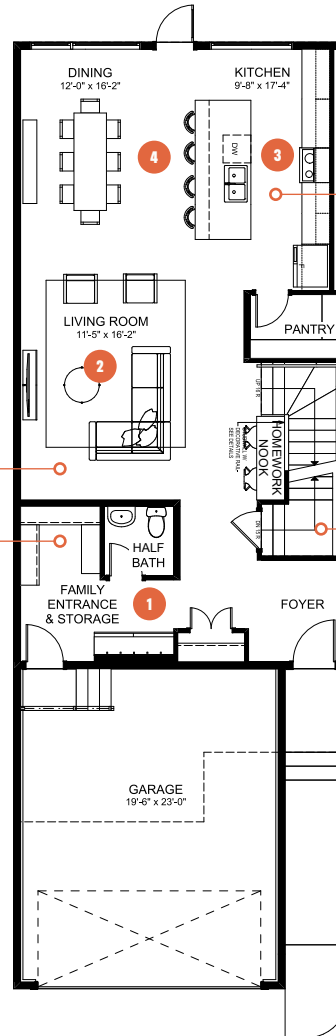
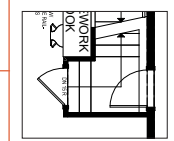
#### MAIN FLOOR OPTION Homework Room/ Full Bath



#### MAIN FLOOR OPTION Chef's Kitchen



#### MAIN FLOOR OPTION Side Entry



**1** Functional family entrance for getting everyone in and out of the house with ease

**2** Oversized central living room with space for everyone to put up their feet

**3** Large kitchen with effortless flow for easy meal prep or grab-and-go meals

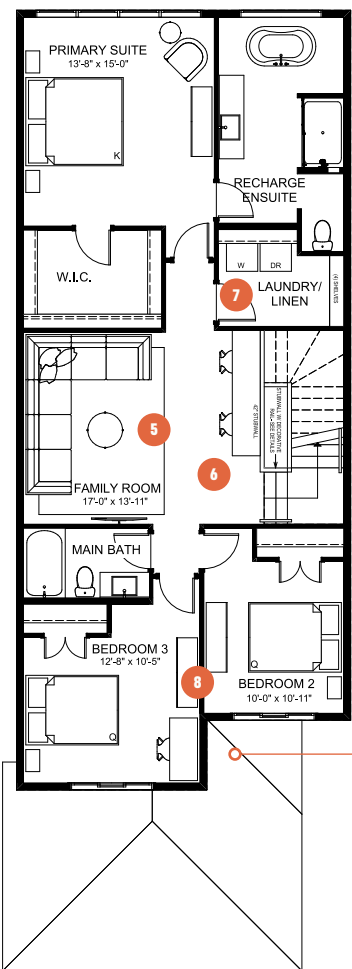
**4** Designated dining area that comfortably seats 8 for great family dinners



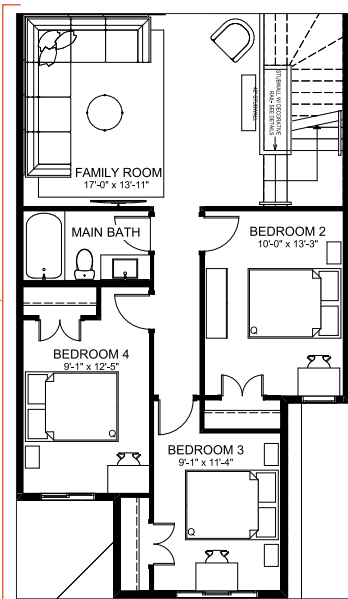
# FAMILY CENTERED 24

3 BEDROOMS | 2.5 BATHS | 2,293-2,449 SQ. FT.  
24' POCKET

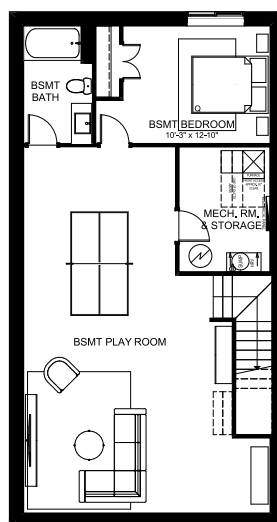
## SECOND FLOOR 1,213-1,369 SQ. FT.



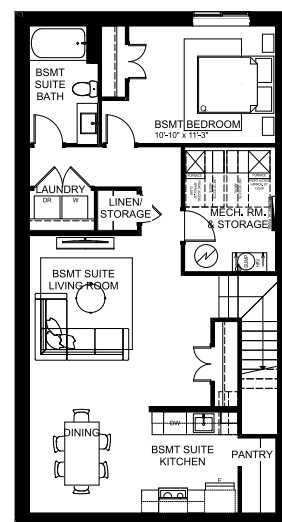
## SECOND FLOOR OPTION Fourth Bedroom Adds an additional 156 SQ FT



## BASEMENT DEVELOPMENT OPTION 908 SQ. FT.



## SECONDARY SUITE OPTION Basement Development 908 SQ. FT.



- 5** Spacious family room for sharing quality time together
- 6** Flexible space for dedicated homework stations
- 7** Purposeful laundry room with extra storage space for when you need it
- 8** Large secondary bedrooms for every member of the family