

FAMILY CENTERED 20

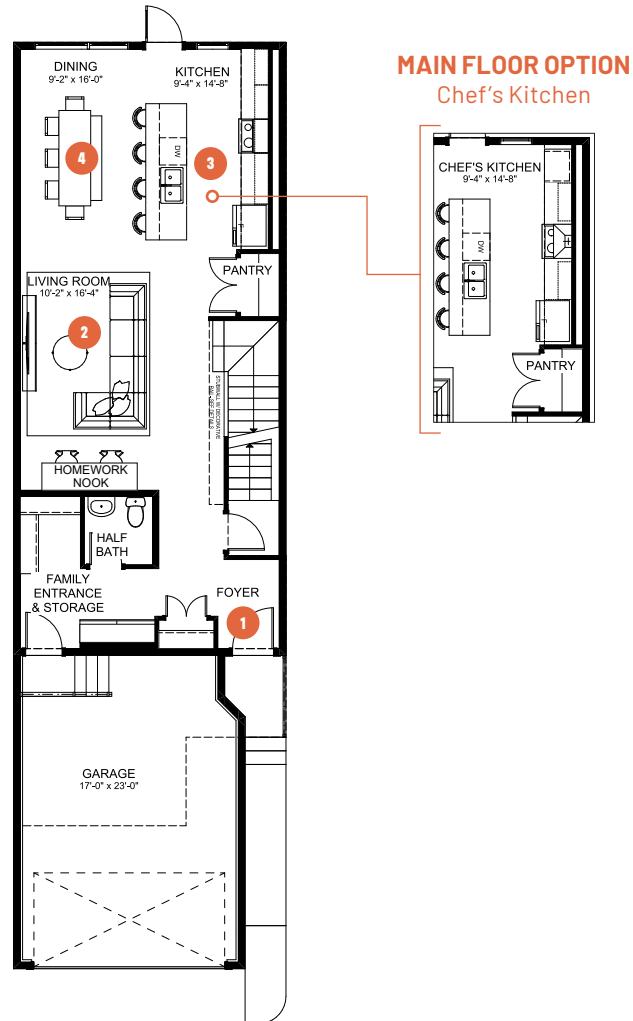
3 BEDROOMS | 2.5 BATHS | 1,921 SQ. FT. | 20' POCKET

MAIN FLOOR

900 SQ. FT.

Family time comes first.

Life is busy, but you prioritize spending time together. Your ideal way to spend your evenings and weekends includes cozy movie nights on the couch or playing your favourite board games as a family. **Family Centered** is designed to help you achieve that. The large, central living room is the heart of the home, where your most precious memories are created. The family entrance and storage room coming from the garage includes ample storage for all your family's coats and shoes. The large kitchen creates the perfect backdrop for meal prep. Upstairs includes a spacious central family room, two large secondary bedrooms for the kids, and a luxurious primary suite to recharge.



- 1 Functional family entrance for getting everyone in and out of the house with ease
- 2 Oversized central living room with space for everyone to put up their feet

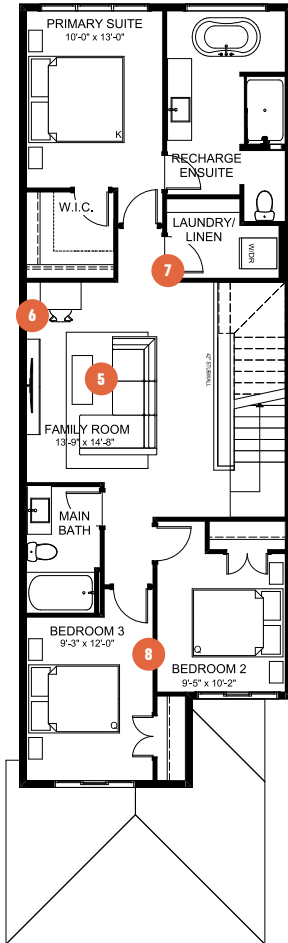
- 3 Large kitchen with effortless flow for easy meal prep or grab-and-go meals
- 4 Designated dining area that comfortably seats 8 for great family dinners



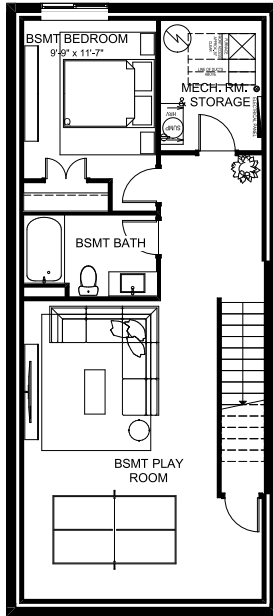
FAMILY CENTERED 20

3 BEDROOMS | 2.5 BATHS | 1,921 SQ. FT. | 20' POCKET

SECOND FLOOR 1,021 SQ. FT.



BASEMENT DEVELOPMENT OPTION 752 SQ. FT.



- 5 Spacious family room for sharing quality time together
- 6 Flexible space for dedicated homework stations
- 7 Purposeful laundry room with extra storage space for when you need it
- 8 Large secondary bedrooms for every member of the family