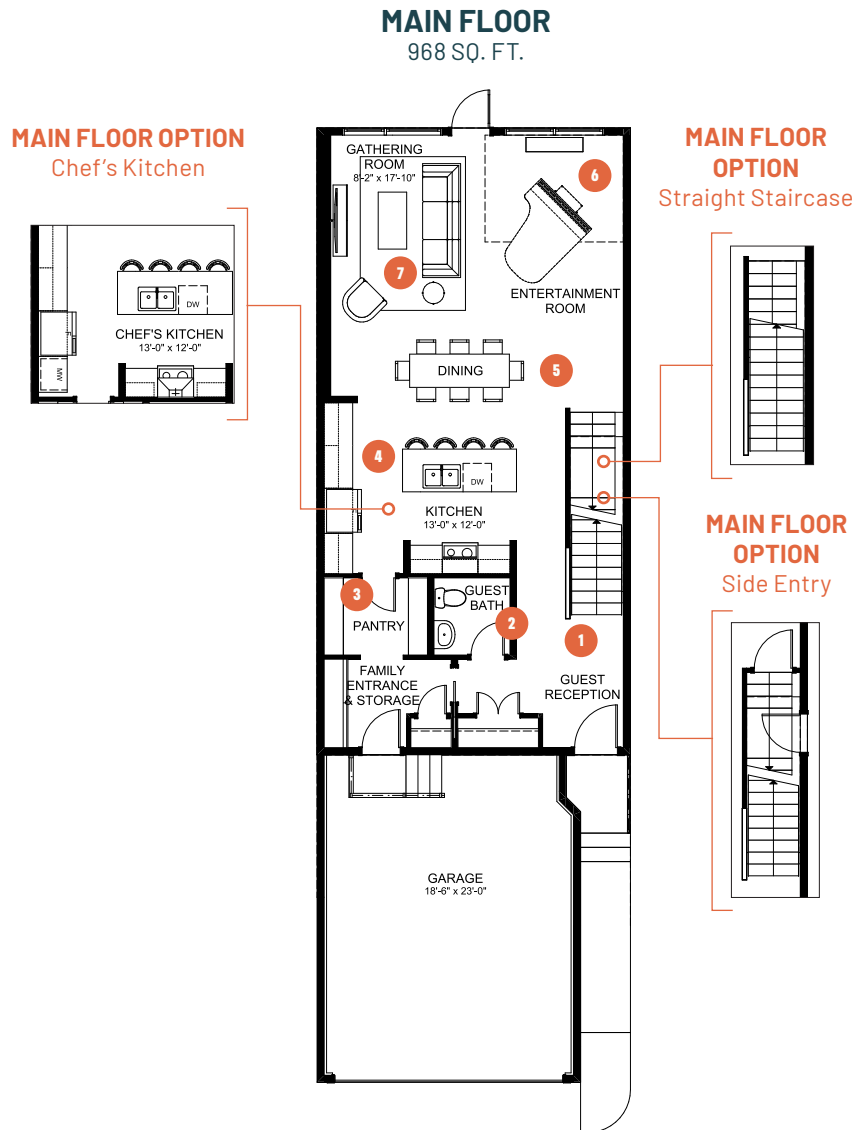


ENTERTAIN PLAY 22

3 BEDROOMS | 2.5 BATHS | 2,065 SQ. FT. | 22' POCKET

You are the host that's all about fun - whether it's gathering around the piano, shooting a round of pool, karaoke nights with the girls, or hosting a watch party.

You can easily switch between formal and informal dining depending on the mood, and you love to be a part of the party. The home features an impressive open to below design above the piano area, allowing music to flow through the home. **Entertain Play** is planned to ensure the kitchen is integrated with the entertaining space, while a dedicated "play" or entertainment area large enough to comfortably fit a grand piano means you can keep the party going until the early hours of the morning. Upstairs you will find a large recreation room, a relaxing primary suite, and two full sized bedrooms for the kids or overnight guests.



1 Large guest reception with ample storage to give your guests a warm welcome

2 Tucked away guest bath for added privacy

3 Oversized walkthrough pantry to make storing all your ingredients and kitchen tools easy and accessible

4 Centrally located kitchen to integrate with the rest of the party

5 Spacious dining area that easily fits 8 to host amazing dinner parties

6 Dedicated entertainment room to host your favourite activity

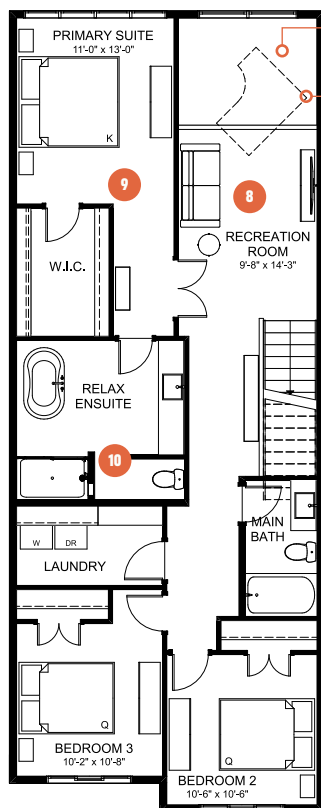
7 Impressive gathering rooms with ample space for visiting among guests



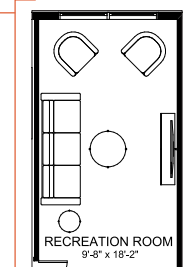
ENTERTAIN PLAY 22

3 BEDROOMS | 2.5 BATHS | 2,065 SQ. FT. | 22' POCKET

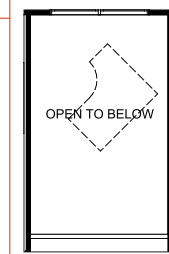
SECOND FLOOR 1,097 SQ. FT.



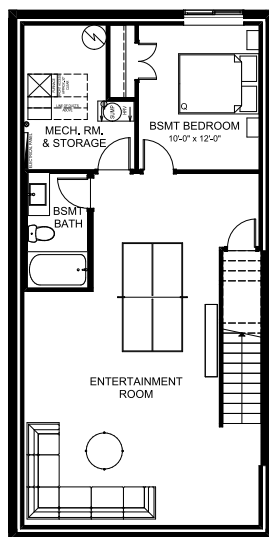
SECOND FLOOR OPTION Recreation Room



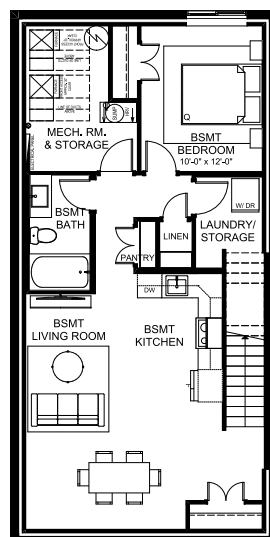
SECOND FLOOR OPTION Extended Open to Below



BASEMENT DEVELOPMENT OPTION 775 SQ. FT.



SECONDARY SUITE OPTION Basement Development 775 SQ. FT.



- 8 Recreation room with open to below to keep the fun flowing throughout the home
- 9 Relaxing primary suite to wind down after a night of hosting

- 10 Luxurious ensuite with free standing soaker tub and fully tiled shower to treat yourself after treating others