

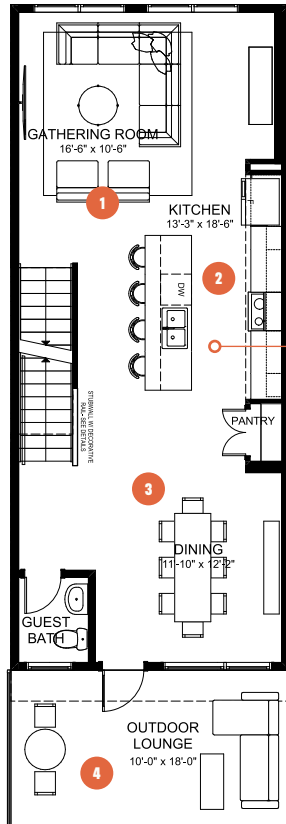
ENTERTAIN PARK VIEW 18

2 BEDROOMS | 2.5 BATHS | 1,877 SQ. FT. | 18' POCKET

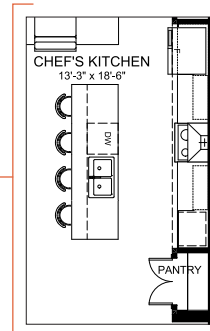
The **Entertain Park View** home is designed for those who love to host and put the experiences of their guests first.

Starting from the ground floor level, you can conveniently welcome guests through both the front foyer or garage entry. An expansive entertainment room for your TV, poker table or foosball is the ideal space for creating fun memories with your guests. On the main floor, the space is designed for hosting; with a kitchen at the heart of the party and a large dining room that flows onto the outdoor lounge, guests are able to move from cocktails and dinner appies, to engaging conversations with ease. The upper floor continues the party upstairs with a recreation room, and a primary suite with tiled shower and free-standing soaker allows you to put your feet up after all you do for others.

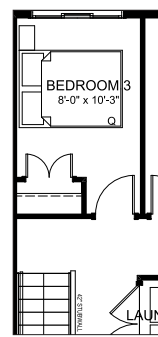
MAIN FLOOR
442 SQ. FT.



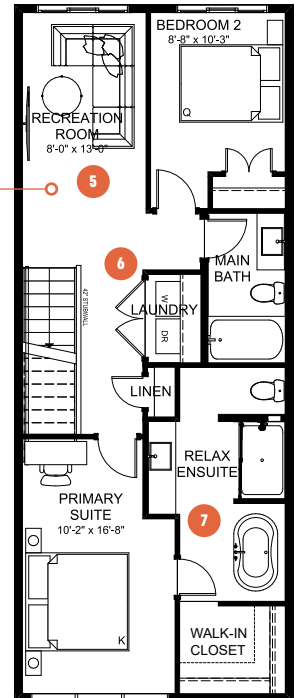
MAIN FLOOR OPTION
Chef's Kitchen



UPPER FLOOR OPTION
Three Bedroom



UPPER FLOOR
772 SQ. FT.



- 1 Spacious gathering room to enjoy great company and conversations
- 2 Central open kitchen that is the heart of the party
- 3 Designated dining area that comfortably seats 8

- 4 Expansive outdoor lounge to enjoy the warm summer evenings with your friends and family
- 5 Upper floor recreation room to continue to party upstairs
- 6 Convenient upper floor laundry space to make laundry a breeze

- 7 Luxurious ensuite with tiled shower and free standing soaker tub to put up your feet after a great night of hosting

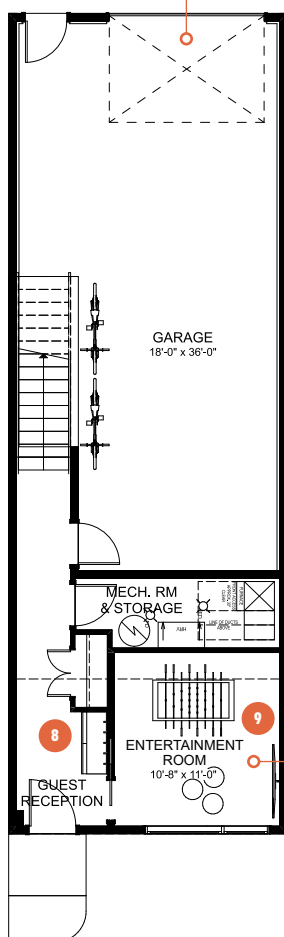


ENTERTAIN PARK VIEW 18

2 BEDROOMS | 2.5 BATHS | 1,877 SQ. FT. | 18' POCKET

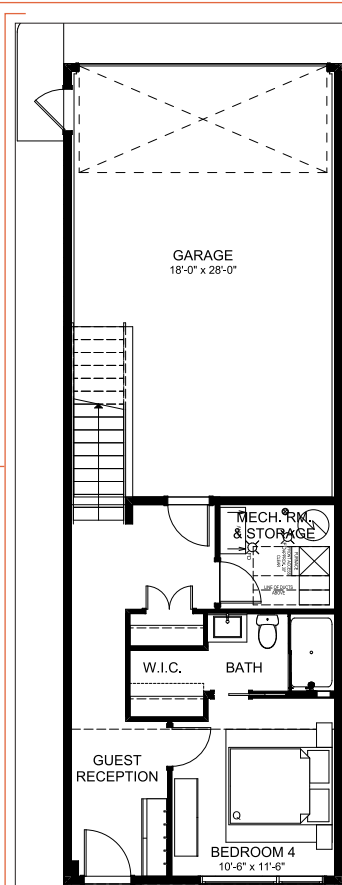
GROUND FLOOR

326 SQ. FT.



GROUND FLOOR OPTION

Bed & Bath



- 8 Guest reception area with ample storage to give a warm welcome
- 9 Expansive entertainment room that is the ideal space for creating fun memories with your guests

GROUND FLOOR OPTION

2 Car Garage

