

# ENTERTAIN IMPRESSION 20

3 BEDROOMS | 2.5 BATHS | 1,832 SQ. FT. | 20' POCKET

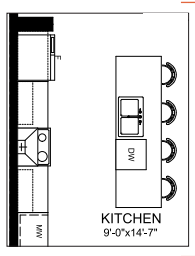
**Creating a standout impression is everything to you, so you believe in putting your best foot forward whenever you have guests over.**

You're proud of your home and you're not afraid to show it off a little. You elevate your hosting game by thinking of every tiny detail like handwritten name plates, lush floral arrangements, a chef-inspired menu and drinks to match. **Entertain Impression** includes an oversized kitchen island and a large, dedicated dining space perfect for preparing and showcasing meals. An upstairs recreation room works for more casual gatherings or a place for the kids to have a party of their own. Three bedrooms, including a primary suite with ensuite, are also located on the home's second floor.

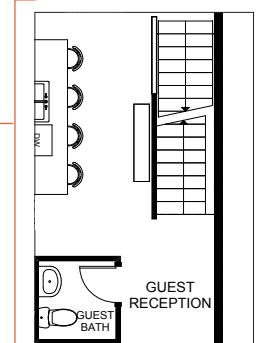
## MAIN FLOOR

830 SQ. FT.

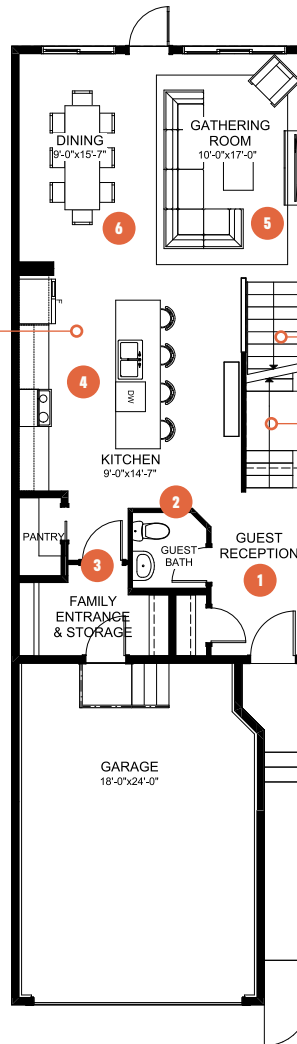
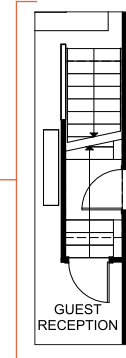
### MAIN FLOOR OPTION Chef's Kitchen



### MAIN FLOOR OPTION Straight Staircase



### MAIN FLOOR OPTION Side Entry



- 1 Open guest reception with storage to give your guests a great first impression
- 2 Tucked away guest bath for added privacy
- 3 Closed off family entrance to store your ingredients and kitchen tools away from the main entertaining space
- 4 Kitchen with large countertop space to make cooking and serving your guests effortless
- 5 Spacious gathering room to enjoy great company and conversations
- 6 Dedicated dining space for showcasing your favourite recipes

Updated December 23, 2021

Rendering artists Interpretation ONLY & may not be exactly as shown. Floorplans, specifications and dimensions shown are approximate and subject to change without notice.

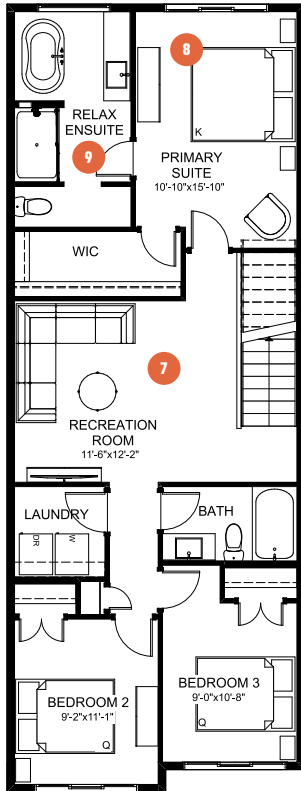
**CANTIRO**  
HOMES



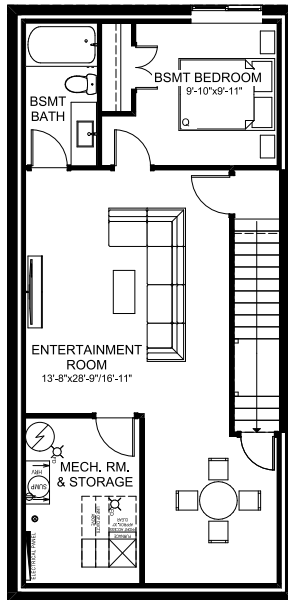
# ENTERTAIN IMPRESSION 20

3 BEDROOMS | 2.5 BATHS | 1,832 SQ. FT. | 20' POCKET

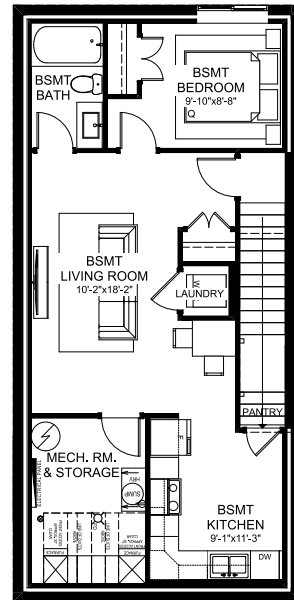
## SECOND FLOOR 1,002 SQ. FT.



## BASEMENT DEVELOPMENT OPTION 646 SQ. FT.



## SECONDARY SUITE OPTION Basement Development 646 SQ. FT.



- 7 Large central recreation room lets you bring the fun upstairs
- 8 Relaxing primary suite with extra space to wind down after a night of hosting

- 9 Luxurious ensuite with free standing soaker tub and fully tiled shower to treat yourself after treating others