

ENTERTAIN GATHER 22

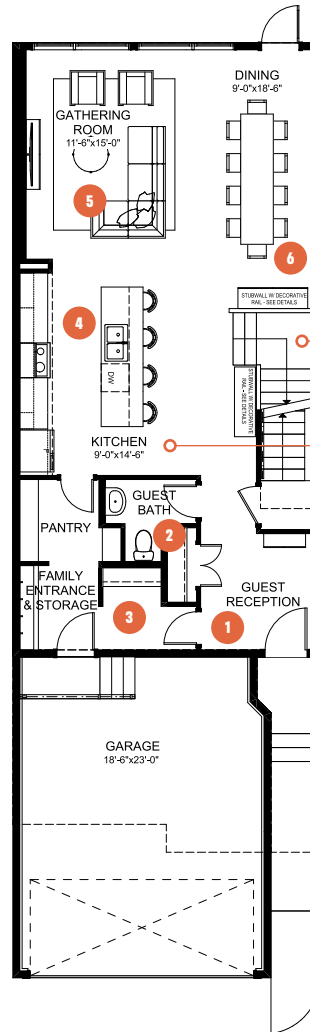
3 BEDROOMS | 2.5 BATHS | 2,169 SQ. FT. | 22' POCKET

You are the host that is all about formal dining. You set out your finest china, serve your perfected homemade dishes, and take pride in creating gorgeous seasonal tablescapes that are a reflection of the care you show your guests.

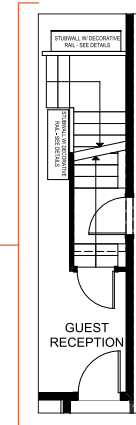
Entertain Gather includes a large, dedicated dining space that can comfortably seat 12 or more guests, while the flow of the home is designed for seamless transitions from cocktail hour, to dinnertime, to gathering in the great room for after-dinner conversations. Upstairs you'll find three spacious bedrooms, plus a recreation room for the family to relax after the party.

MAIN FLOOR

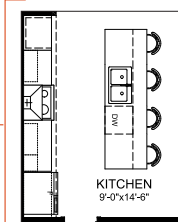
968 SQ. FT.



MAIN FLOOR OPTION Side Entry



MAIN FLOOR OPTION Chef's Kitchen



1 Open guest reception with ample storage to give your guests a warm welcome

2 Tucked away guest bath for added privacy

3 Closed off family entrance to store your ingredients and kitchen tools away from the main entertaining space

4 Kitchen with large counterspace to make cooking and serving your guests effortless

5 Spacious gathering room to enjoy great company and conversations

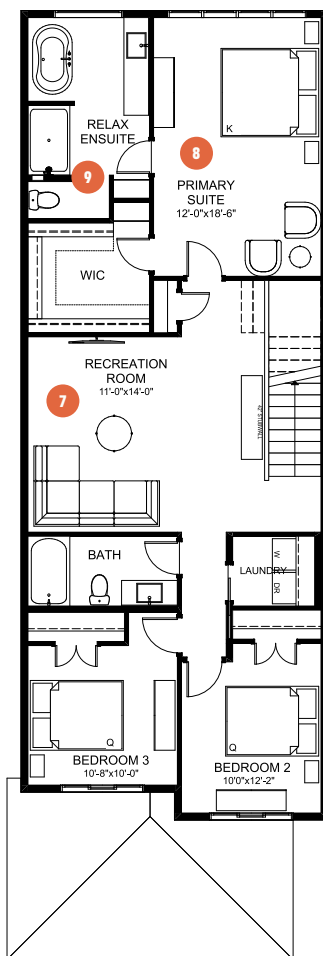
6 Dedicated dining space that can comfortably seat 12 or more for your formal dinner parties



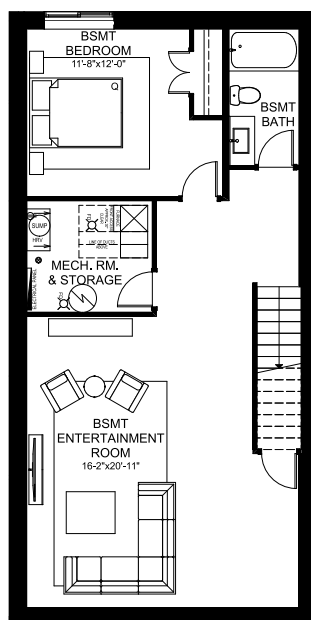
ENTERTAIN GATHER 22

3 BEDROOMS | 2.5 BATHS | 2,169 SQ. FT. | 22' POCKET

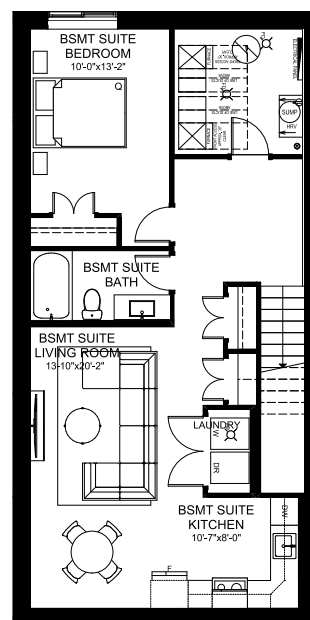
SECOND FLOOR 1,201 SQ. FT.



BASEMENT DEVELOPMENT OPTION 813 SQ. FT.



SECONDARY SUITE OPTION Basement Development 788 SQ. FT.



- 7 Large central recreation room lets you bring the fun upstairs
- 8 Relaxing primary suite with extra space to wind down after a night of hosting

- 9 Luxurious ensuite with free standing soaker tub and fully tiled shower to treat yourself after treating others