

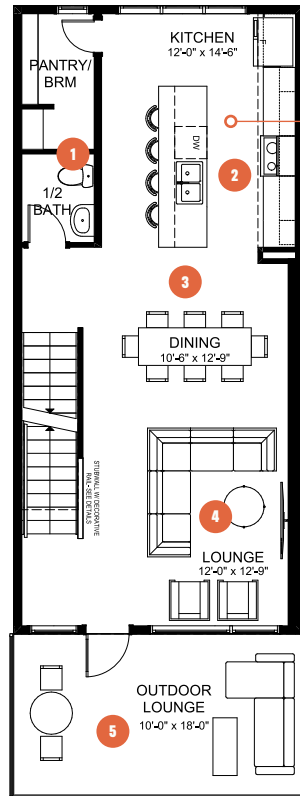
# CAREER PARK VIEW 18

2 BEDROOMS | 2.5 BATHS | 1,752 SQ. FT. | 18' POCKET

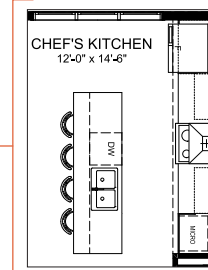
The **Career Park View** home is designed for those who strike a balance between their work life and family life.

On the ground floor level are thoughtfully designed spaces for both work and play – a dedicated home office for uninterrupted focus and a flex area for your home gym or client treatment room. The main floor flows effortlessly from the expansive outdoor lounge, all the way through to your kitchen. Move upstairs to find your own private retreat – a primary suite with oversized dressing room and a luxurious ensuite complete with tiled shower, free-standing soaker tub, dual sinks and a built-in makeup vanity. Your morning routines will be effortless and your nightly wind-downs rewarding.

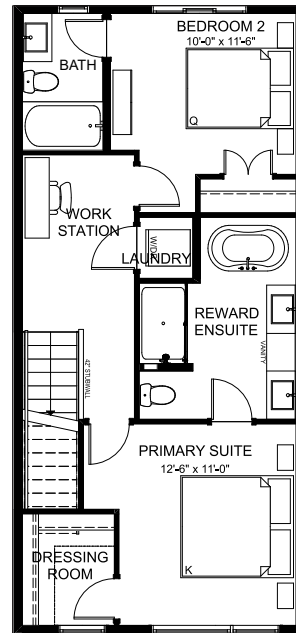
**MAIN FLOOR**  
702 SQ. FT.



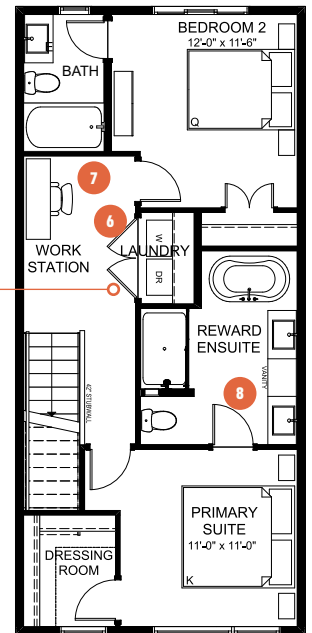
**MAIN FLOOR OPTION**  
Chef's Kitchen



**UPPER FLOOR OPTION**  
Laundry



**UPPER FLOOR**  
664 SQ. FT.



- 1 Large pantry and broom closet for keeping your groceries and small appliances organized
- 2 Open kitchen to allow for quick meal prep and easy casual dining
- 3 Designated dining area that comfortably seats 8

- 4 Spacious lounge with space for everyone to put up their feet
- 5 Expansive outdoor lounge to enjoy the warm summer evenings
- 6 Convenient upper floor laundry space to make laundry a breeze
- 7 Flexible spaces for workstations

- 8 Luxurious ensuite with tiled shower, dual sinks and makeup vanity for efficient mornings and relaxing evenings



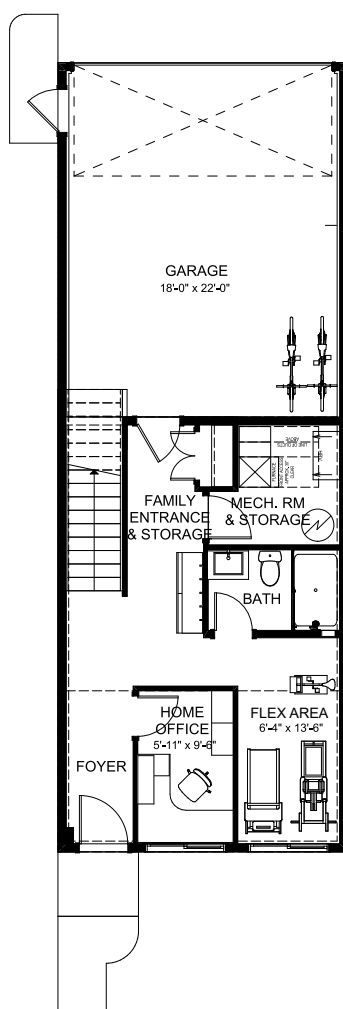
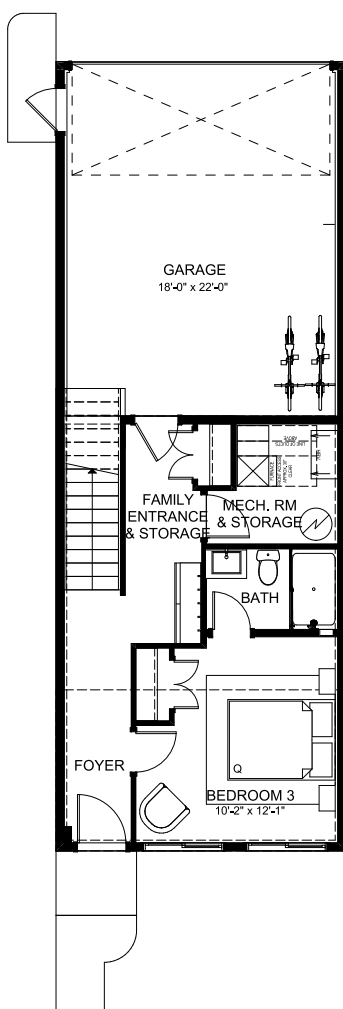
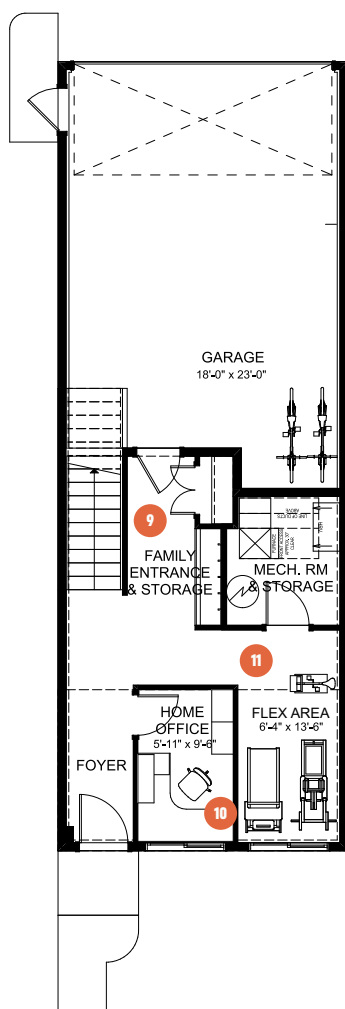
# CAREER PARK VIEW 18

2 BEDROOMS | 2.5 BATHS | 1,752 SQ. FT. | 18' POCKET

**GROUND FLOOR**  
386 SQ. FT.

**GROUND FLOOR  
OPTION**  
Bed & Bath

**GROUND FLOOR  
OPTION**  
Bath



- 9 Functional family entrance for getting everyone in and out of the house with ease
- 10 Dedicated home office for uninterrupted focus
- 11 Flex area that would make the perfect home gym or a client treatment room for your home business