

\$25,000
Off next 5 Lots

**LARGER
ESTATE LOTS**



Don't miss out on this exclusive opportunity to purchase your lot directly from the developer and choose your own builder.

THE DRIVE
— IN WINDERMERE —

An aerial photograph of a residential development. A winding road, 'The Drive', runs through the center, lined with green and red highlighted lots. To the left is a lush green golf course with a small pond. To the right is an established neighborhood with houses and trees.

\$25,000
off next 5 Lots

EDMONTON'S EXCLUSIVE ADDRESS

The Drive in Windermere is the address for estate homes with a scenic setting for sophisticated tastes.

The Drive offers exceptional choice and benefits for those looking to design their ultimate estate home:

- 1/3 to 1/2 acre lots with 82' - 84' pockets
- New pricing from \$532,900
- Diverse architectural styles and sizes
- Only 3 amenity lots remaining

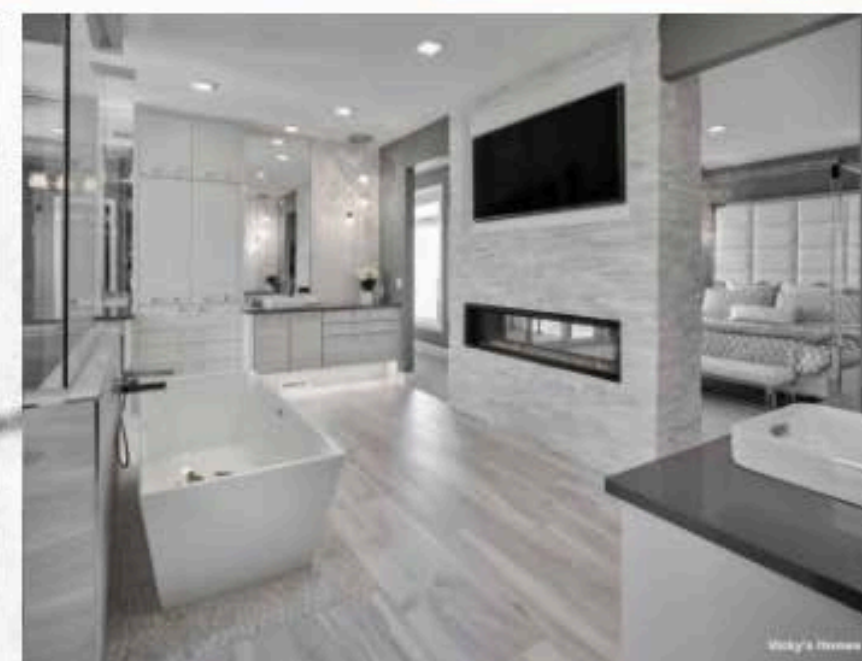
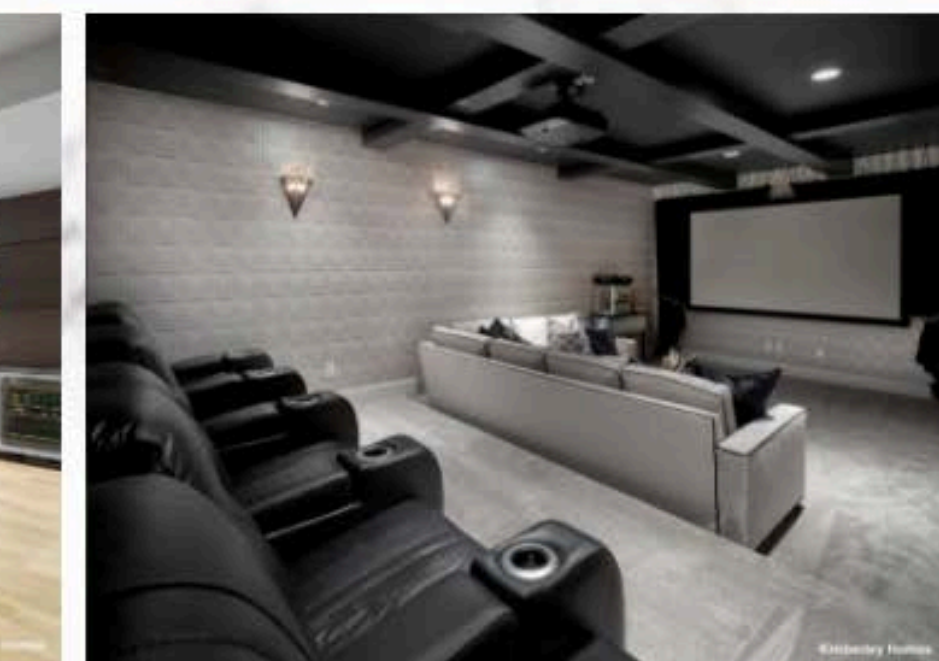
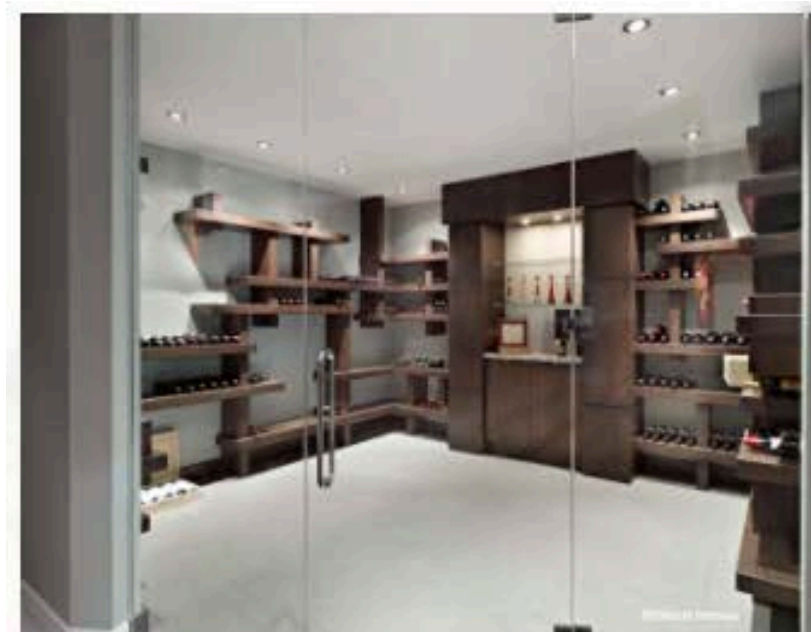
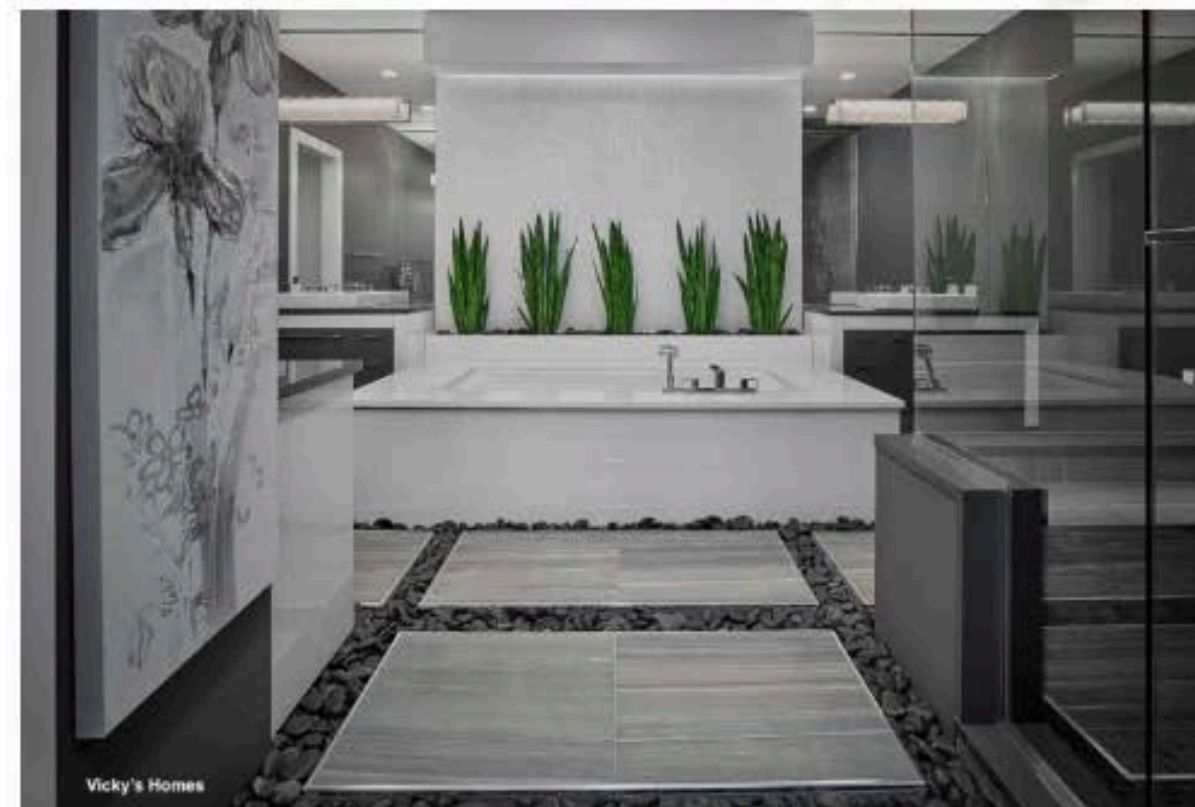
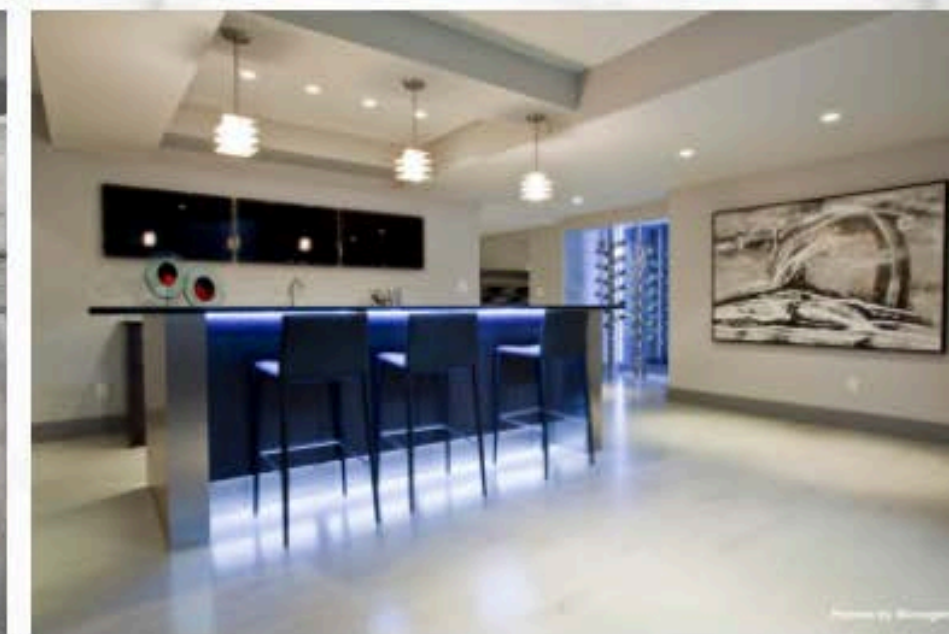
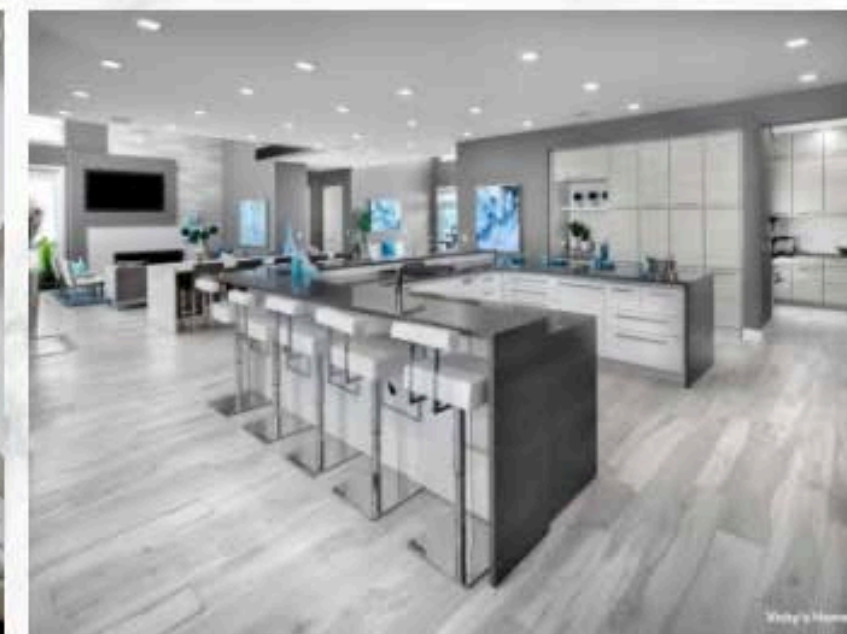
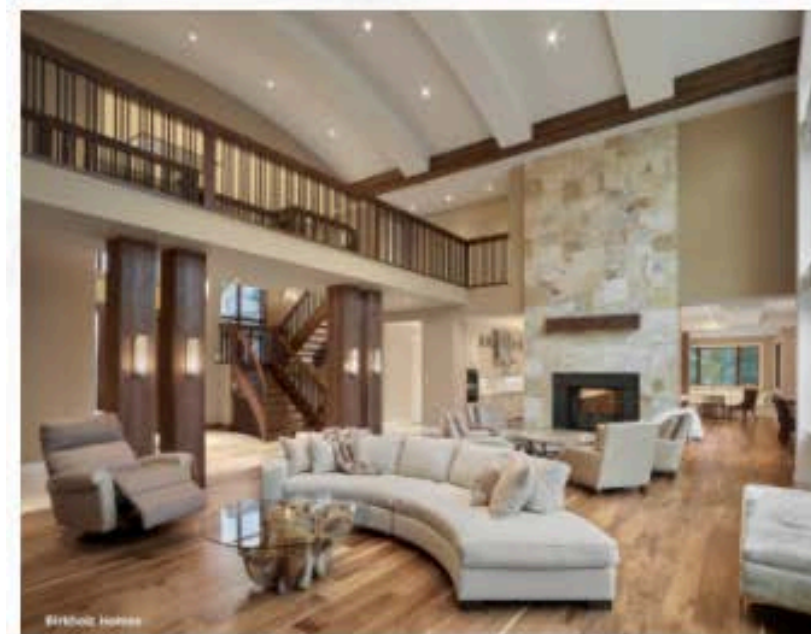
Join those who have made a sound investment in this prestigious area.

WHY THE DRIVE

In addition to the exclusive location within Southwest Edmonton, our larger lots and range of architectural styles provide a blank canvas for you to design your ultimate home that expresses your personality and lifestyle.

You have the freedom to choose your own builder to bring your vision to life.
Grand entryway, open concept, integrated technology, gourmet kitchen, ultimate home entertainment, executive man-cave...

What would you create?



YOU CHOOSE YOUR BUILDER

You are free to pick your own builder / architect
to create the home of your dreams.

Purchase a lot directly from the developer and
have two years to plan and build.



Here are some companies that have created
estate homes in nearby communities...
feel free to contact one of them or choose your own:

Builders

- [Ace Lange Homes](#)
- [Birkholz Homes](#)
- [Cameron Homes](#)
- [Dolce Vita Homes](#)
- [Five Star Homes](#)
- [G Squared Homes](#)
- [Homes by Managen](#)
- [Kanvi Homes](#)

- [Kimberley Homes](#)
- [Liske Developments](#)
- [Sunny Valley Homes](#)
- [Vicky's Homes](#)

Design Firms

- [Boss Design](#)
- [designtwogroup inc.](#)

CLOSE TO EVERYTHING

Enjoy the stunning surroundings of Edmonton's River Valley and amazing amenities such as a beautifully manicured golf course, and shopping at the Currents of Windermere.

Easy and quick access to the Anthony Henday and Whitemud Drive.



WHAT'S YOUR STYLE?

The Drive in Windermere includes homes of a diverse range of architectural styles, designed with meticulous attention to detail, and built with high quality materials including Craftsman, California, Colonial, Georgian, Tudor, French Country, Prairie, and Contemporary / Modern.





Off \$25,000
next 5 Lots

ESTATE LOTS 82' - 84' Building Pockets

- 1/3 to 1/2 acre lots
- New pricing from \$532,900
- Only 3 amenity lots remaining

 *Sold*

\$25,000
Off next 5 Lots

ESTATE PRICE LIST

For latest lot status updates,
please check
thedriveinwindermere.ca/maps/

Stage	Block	Lot	Frontage Ft.	Frontage M	Pocket	Amenity	Price	Status
9	14	15	105.26	32.09	84	walkway	\$552,900	Available
9	14	16	104.34	31.81	84		\$549,900	Available
9	14	17	104.34	31.81	84		\$549,900	Available
9	14	18	102.34	31.2	82		\$539,900	Available
9	14	19	102.34	31.2	82		\$532,900	Available
11	14	21	102.34	31.2	82	walkway	\$619,900	Available
11	14	22	102.34	31.2	82		\$614,900	Available
11	14	23	102.34	31.2	82		\$614,900	Available
11	14	24	102.34	31.2	82		\$614,900	Available
11	14	25	102.37	31.21	82		\$614,900	Available
11	14	26	104.34	31.81	84		-	SOLD
11	14	27	102.34	31.2	82		-	SOLD
11	14	28	104.34	31.81	84		-	SOLD
11	14	29	102.34	31.2	82		-	SOLD
11	14	30	104.34	31.81	84		\$629,900	Available
11	14	31	102.34	31.2	82		-	SOLD
11	14	32	104.34	31.81	84	pond	\$699,900	Available
11	14	33	102.34	31.2	82	pond	-	SOLD
11	14	34	104.34	31.81	84	pond	-	SOLD
11	14	35	102.34	31.2	82	walkway, pond	-	SOLD
11	14	36	105.65	32.21	84	walkway, pond	-	SOLD
11	14	37	104.3	31.8	84	pond	-	SOLD
11	14	38	104.3	31.8	84	pond	-	SOLD
11	14	39	104.3	31.8	84	pond	\$819,900	Available
11	14	40	104.3	31.8	84	pond	\$799,900	Available
11	14	41	104.3	31.8	84	park, pond	\$799,900	Available



thedriveinwindermere.ca

780.484.4389 / info@beaverbrook.ca

THE DRIVE

— IN WINDERMERE —

[Lot Hold Policy](#)

[Frequently Asked Questions](#)