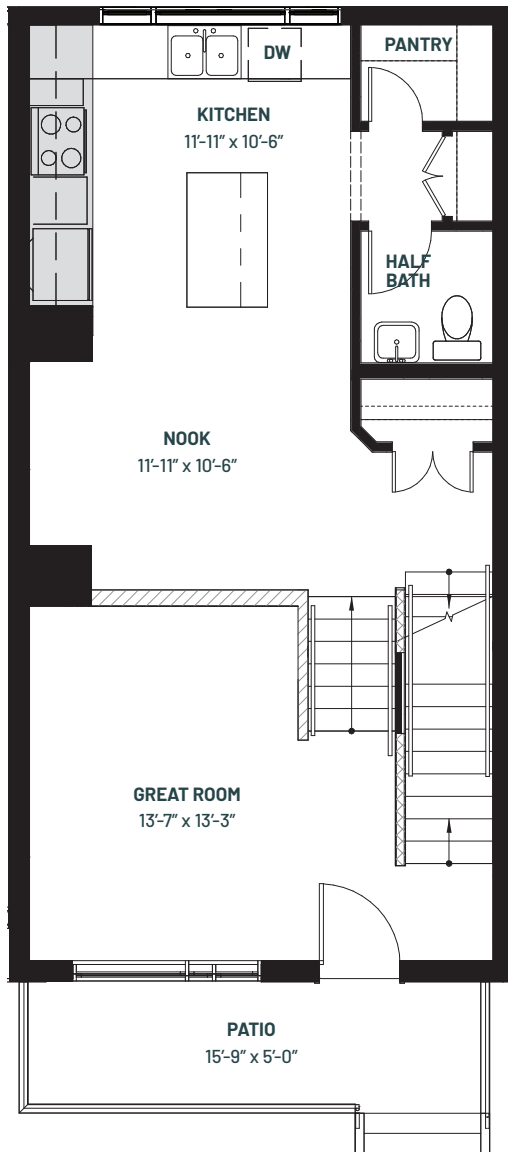


PARIS

2-3 BEDROOMS | 2.5 BATHS | 1283 SQ. FT. | CANTIRO TOWNHOMES AT KESWICK

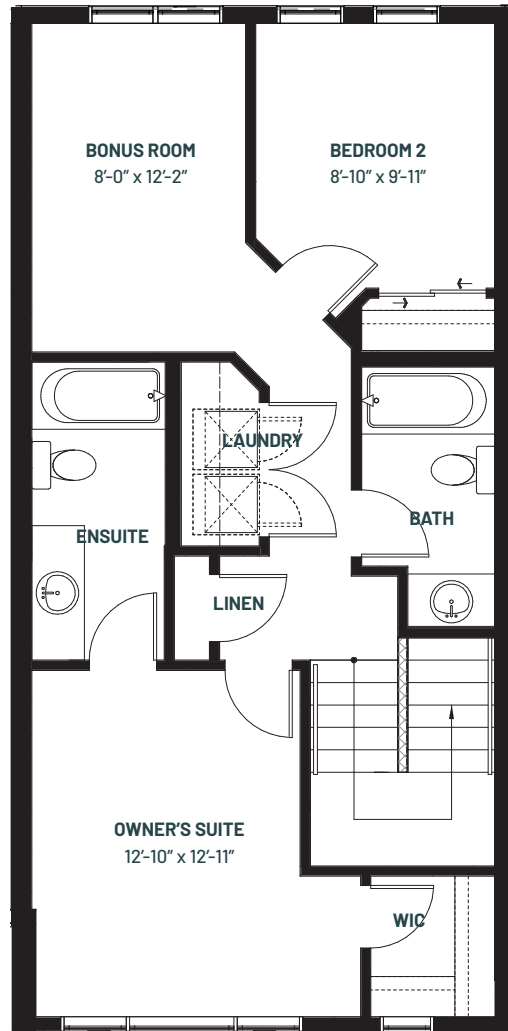
MAIN FLOOR

REAR ISLAND KITCHEN
651 SQ. FT.



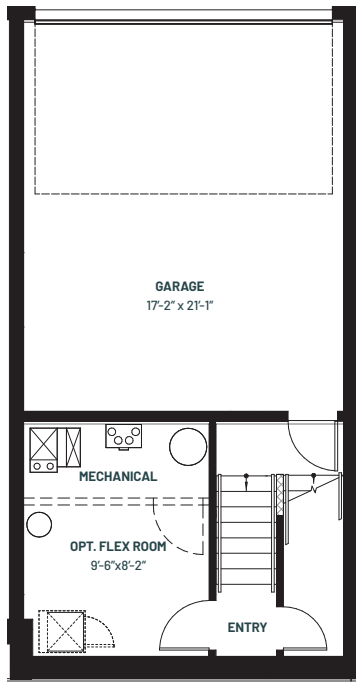
UPPER FLOOR

2 BEDROOM + 2.5 BATHS + BONUS
632 SQ. FT.



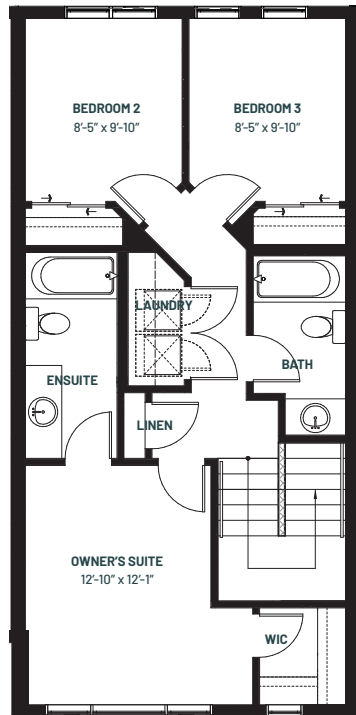
Rendering artists Interpretation ONLY & may not be exactly as shown. Floor plans, specifications and dimensions shown are approximate and subject to change without notice.

LOWER FLOOR

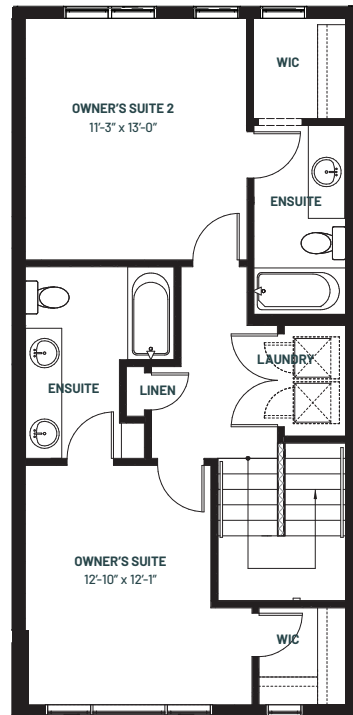


259 SQ. FT.

UPPER FLOOR OPTIONS



3 BEDROOM + 2.5 BATHS
632 SQ. FT.



DUAL MASTERS + 2.5 BATHS
632 SQ. FT.