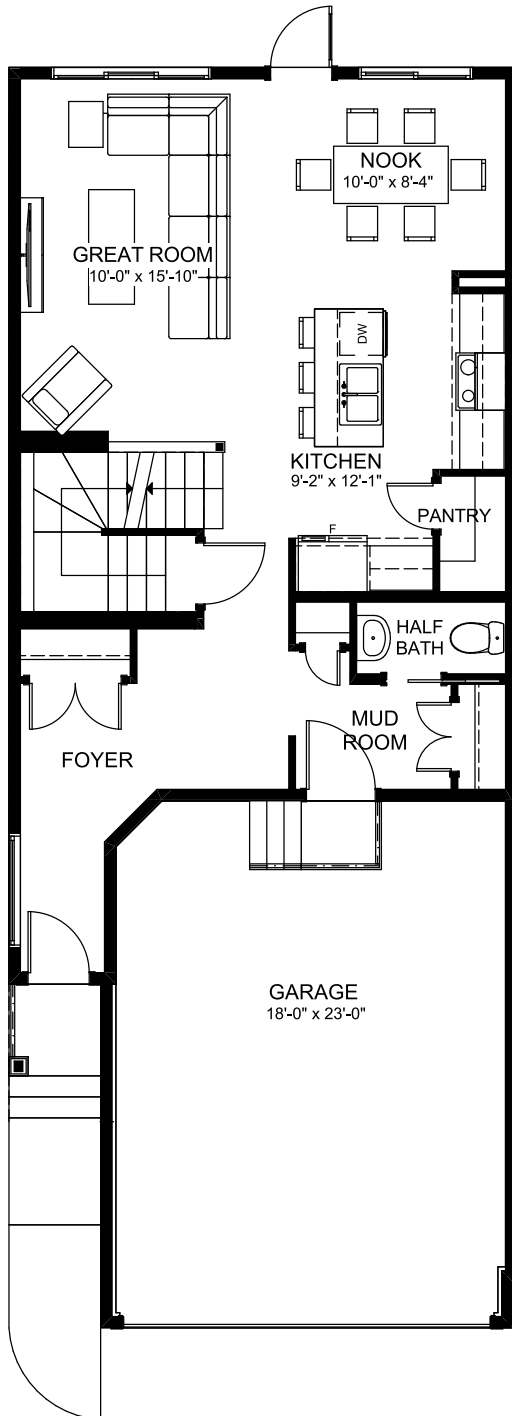


# DANTE 22

3-4 BEDROOMS | 2.5 BATHS | 1666 SQ. FT. | 22' POCKET

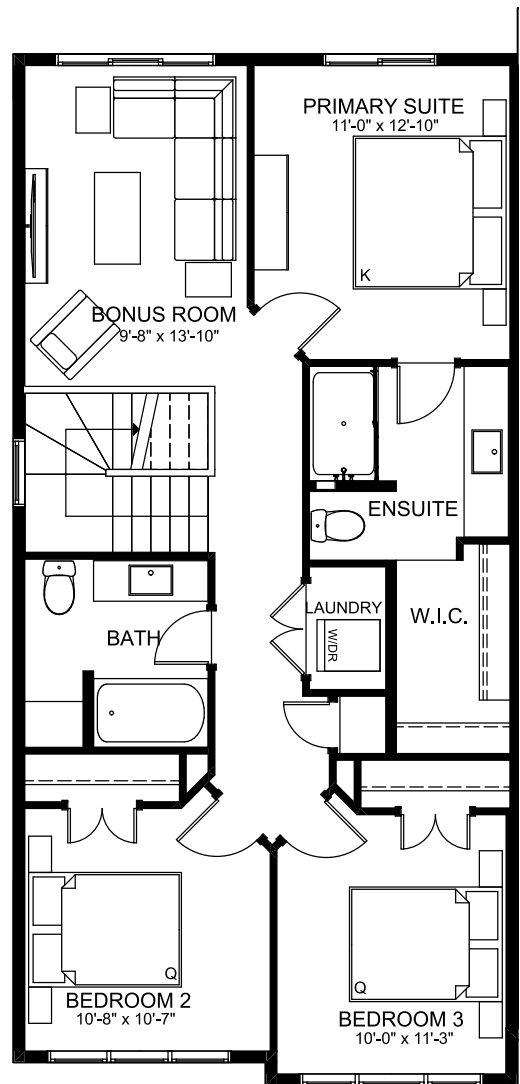
## MAIN FLOOR

743 SQ. FT.

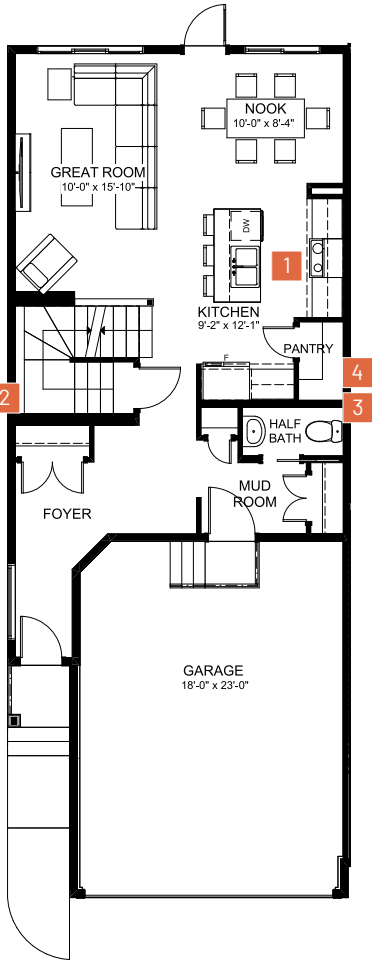


## UPPER FLOOR

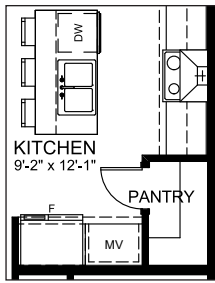
923 SQ. FT.



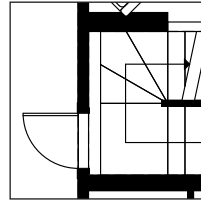
Rendering artists Interpretation ONLY & may not be exactly as shown. Floorplans, specifications and dimensions shown are approximate and subject to change without notice.



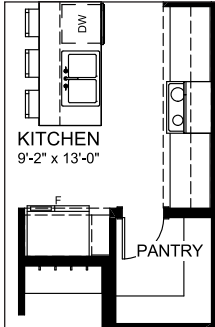
MAIN FLOOR OPTIONS



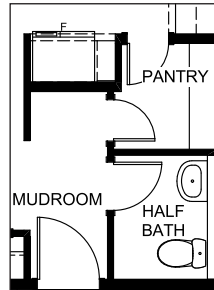
1 Chef's Kitchen



2 Basement Entry

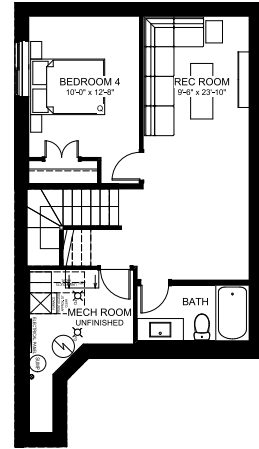


3 Walk-In Pantry

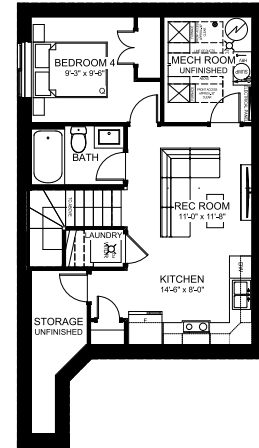


4 Walk-Through Pantry

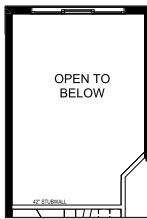
OPTIONAL BASEMENT DEVELOPMENT  
517 sq. ft.



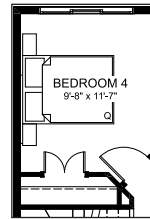
BASEMENT SECONDARY SUITE  
517 sq. ft.



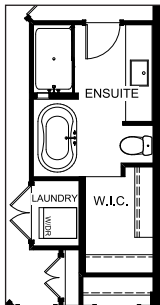
UPPER FLOOR OPTIONS



5 Open to Below



6 Fourth Bedroom



7 Ensuite Oasis

ALTERNATIVE BASEMENT  
SECONDARY SUITE 517 sq. ft.

